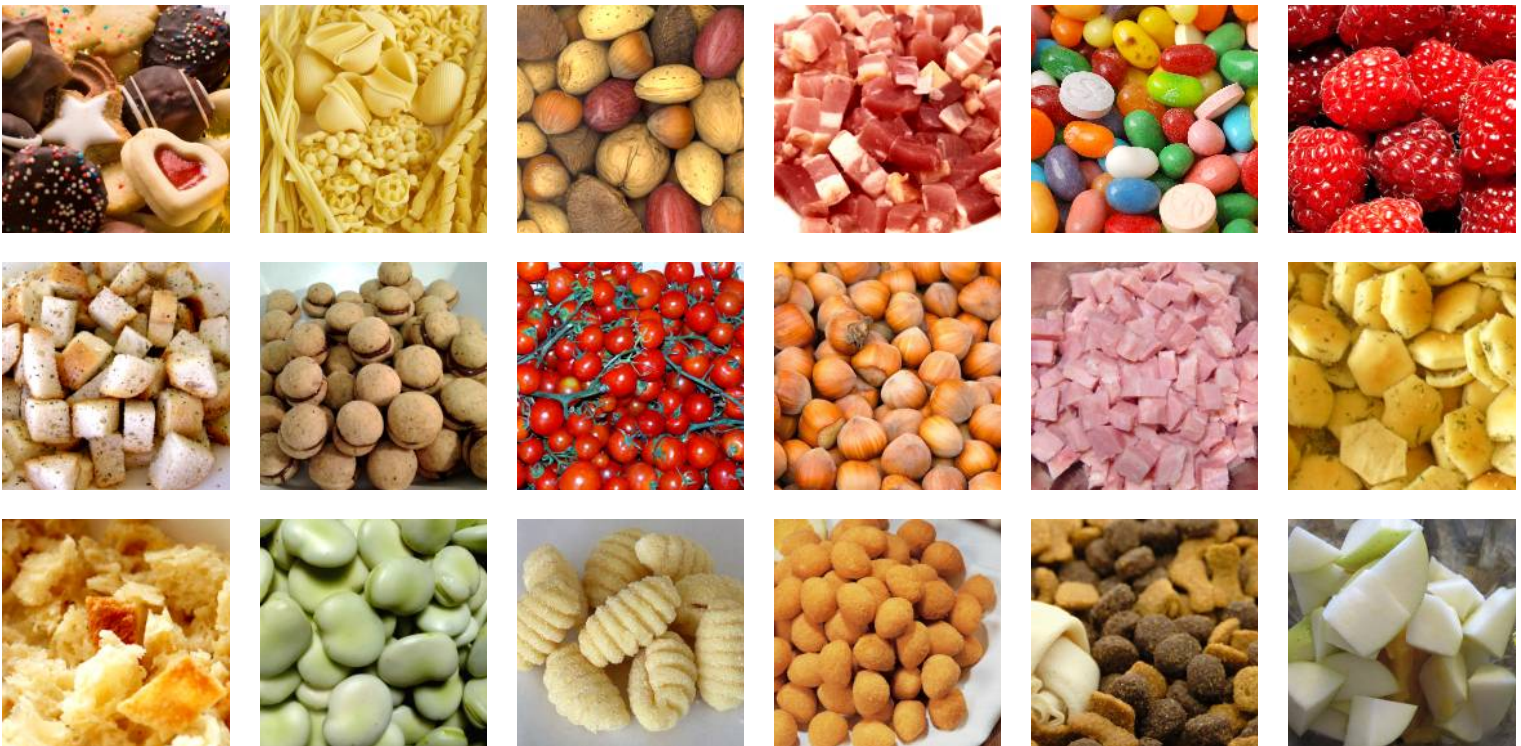


# S series

ELECTRONIC LINEAR WEIGHERS  
DOSATORI ELETTRONICI a CANALI VIBRANTI

3cm · max size product



100  
95  
75  
25  
5  
0

## Features - Descrizione

S series electronic linear weighers are the suitable system for automatic dosing every goods of medium granulometry (until 3cm).

The 2 independent vibrating channels ensures the accuracy of weighing by varying the vibration.

The packs support (fitted as standard) is adjustable in height and depth.

S series can create till 4 MIX of different products.

S series weighers are available from 1 to 4 weighing heads and it can be connected to our automatic packaging machines, at a later time.

### TECHNICAL FEATURES:

- Suitable products (max): 3 cm
- Vibrating channels: 2 (for each head, weigher)
- Available head weighers: from 1 to 4
- Weight range: from 50gr to 10Kg (according to the product's volumetry)
- Recipes: 50
- Structures: stainless or painted steel
- KIT "SOFT SLOPE" for fragile products
- Product's flowing: flat surface, dimple plate, teflon coating

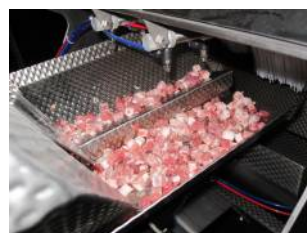


I dosatori elettronici lineari a canali vibranti della serie S sono la soluzione ideale per pesare in automatico, tutti i prodotti di media granulometria (fino a 3cm). La precisione di pesatura è assicurata dai 2 canali vibranti indipendenti di sgrossatura e finitura a vibrazioni differenziate. Il supporto confezioni (montato di serie) è regolabile in altezza ed in profondità. La serie S è in grado di creare fino a 4 MIX di prodotti differenti. I dosatori della serie S sono disponibili da 1 a 4 teste pesatrici e possono essere collegati alle nostre confezionatrici automatiche, anche in un secondo momento.

### CARATTERISTICHE PRINCIPALI:

- Prodotti dosabili (max): 3 cm
- Canali vibranti: 2 (per ogni testa pesatrice)
- Teste pesatrici disponibili: da 1 a 4
- Range pesate: da 50gr a 10Kg (in relazione alla volumetria del prodotto)
- Ricette: 50
- Strutture: acciaio inox o verniciato
- KIT "SOFT SLOPE" per prodotti fragili
- Passaggio prodotto: lamiera liscia, bugnata, teflonata

## Vibrating channels - Canali vibranti



## Optionals - Optional



Frontal closure system

Copertura frontale



High capacity hopper

Tramoggia di carico rialzata



Additional discharge chute

Scivolo di scarico aggiuntivo



Discharge chute + timing hopper

Scivolo di scarico cestello rifasatore

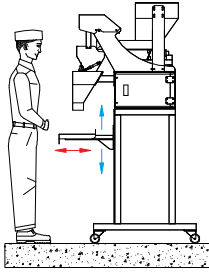


Weigher frame

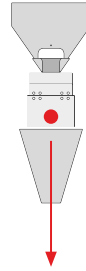
Struttura di sostegno per dosatore

## S1 complete

1 head, complete of frame  
1 testa, completa di struttura



12 weights/min. • 12 pesate/min.



**Main hopper**  
**Tramoggia**

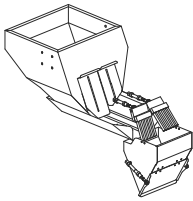
- 38lt. (standard)  
- 100lt. (optional)

**Weigh bucket**  
**Cestello**

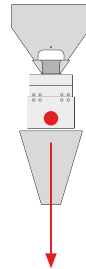
da 2lt. a 40lt.

## S1

1 head • 1 testa



12 weights/min. • 12 pesate/min.



**Main hopper**  
**Tramoggia**

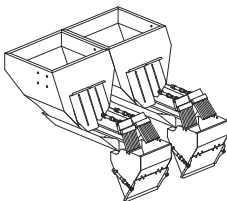
- 38lt. (standard)  
- 100lt. (optional)

**Weigh bucket**  
**Cestello**

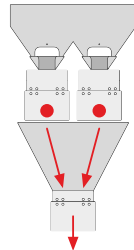
da 2lt. a 40lt.

## S2

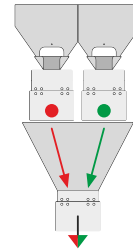
2 heads • 2 teste



24 weights/min.  
24 pesate/min.



12 weights/min. x 2MIX  
12 pesate/min. x 2MIX



**Main hopper**  
**Tramoggia**

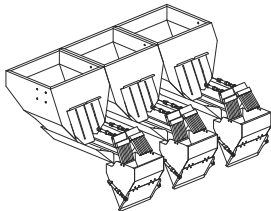
- 76lt. (standard)  
- 200lt. (optional)

**Weigh bucket**  
**Cestello**

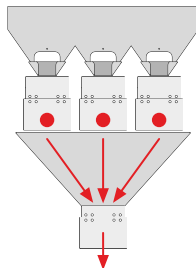
da 2lt. a 40lt.

## S3

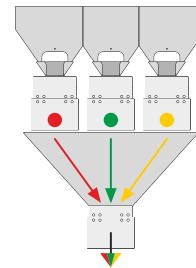
3 heads • 3 teste



36 weights/min.  
36 pesate/min.



12 weights/min. x 3MIX  
12 pesate/min. x 3MIX



**Main hopper**  
**Tramoggia**

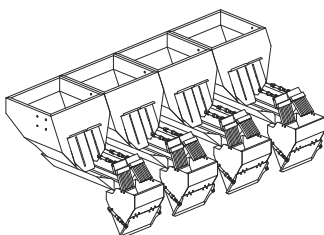
- 114lt. (standard)  
- 300lt. (optional)

**Weigh bucket**  
**Cestello**

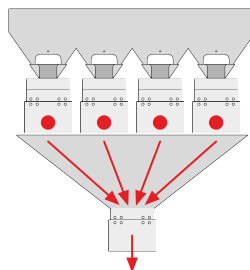
da 2lt. a 40lt.

## S4

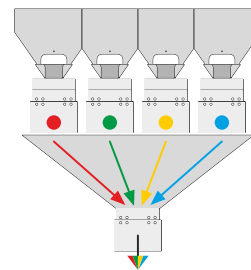
4 heads • 4 teste



48 weights/min.  
48 pesate/min.



12 weights/min. x 4MIX  
12 pesate/min. x 4MIX



**Main hopper**  
**Tramoggia**

- 152lt. (standard)  
- 400lt. (optional)

**Weigh bucket**  
**Cestello**

da 2lt. a 40lt.

Some versions - Alcune versioni



**TECHNO D snc**

Via Marche, 19 · 27029 · Vigevano (PV) · ITALY  
Tel. +39 (0)381 348294 · Fax +39 (0)381 090590  
info@techno-d.it · www.techno-d.it



100  
95  
75  
25  
5  
0