



**THE MOST DETECTABLE  
PRODUCTS INSIDE**



**METAL & X-RAY DETECTABLE  
PRODUCTS**

**P07-64**

**STAINLESS STEEL &  
ALUMINIUM PRODUCTS**

**P65-80**

**DETECTABLE ENGINEERING  
PRODUCTS**

**P81-87**

Product Catalogue – Edition 9



TO PLACE YOUR ORDER CALL +44 (0) 1759 304200  
or email [orders@detectamet.com](mailto:orders@detectamet.com)  
[www.detectamet.co.uk](http://www.detectamet.co.uk)

# Why Choose detectamet® ?

DETECTABLE FOOD SAFETY PRODUCTS

Foreign Matter contamination is a constant risk for many industries. Statistics show that food, beverage and pharmaceutical industries are most at risk.

Undetected, such objects can damage equipment; trigger costly product recalls that harm your reputation and can seriously injure consumers.

The use of HACCP management practices help to prevent this by specifying the use of detectable equipment and materials where ever possible.

The principles of HACCP are recognised by the World Health Organisation and have been incorporated into regulations such as Europe's Article 5 of EC Regulation 852/2004 and are built into food safety regulations in the USA.

Commercial food processing contracts often require the supplier to hold GFSI recognised food safety certificates issued by independent third party auditors. The contractor is now required to demonstrate that they have taken every precaution to prevent the supply of contaminated product.

Established in 2003, Detectamet Ltd offers innovation, enthusiasm and foresight in abundance. We are ISO 9001:2008, ISO 14001 and ISO 18001 accredited as a measure of our commitment to service, safety and environmental management.

Our key focus is the design, manufacture and supply of x-ray and metal detectable products. We bring you tried and tested concepts to the marketplace and continually developing new and innovative solutions. You can source from the largest and most comprehensive range of detectable products available in the world. This is your best opportunity to reduce the risk of foreign matter contamination.

## Mission Statement

"Detectamet takes pride in offering the World a range of products and services that are second to none. We are passionately committed to innovation in the design and quality of our manufacture. Our pioneering and proactive approach to changes and developments in industry builds and develops our current markets as we continuously explore new opportunities. We derive immense satisfaction from being able to help our customers produce and sell safer consumable products"

## Quality Assurance

Detectamet Products are designed to be Food Safe – not just Detectable, they are:

- Metal detectable and/or x-ray visible
- Visually detectable
- Magnetically attractive
- Use materials that are compliant with European and other global standards for food contact use
- Have smooth accessible, cleanable surfaces

The key feature of the products manufactured from Detectamet detectable polymer is that fragments are detected and rejected by standard in-process metal detection and x-ray equipment. All our products are independently tested and meet current EU legislation and US requirements for food contact use.

Visual recognition is also an important feature of the Detectamet range, not just for identification in food product but also for segregation within the factory environment. Detectamet offer the largest range of hygiene colours currently available on the market. This allows customers to incorporate Blue, Black, Red, Green, Yellow, White, Purple, Orange and Pink into the hygiene control procedures.

## Own Branding

As a manufacturer we can offer you own branding on the majority of our products. This is a part of our commitment to working in partnership with companies wishing to benefit from our designs and bring food safe products to a wider marketplace. This makes Food Safety affordable and achievable for the prevention of foreign body contamination around the world.

Sean Smith & Angela Musson-Smith  
CEO & Managing Director

# Index

04	METAL & X-RAY DETECTABLE PRODUCTS
05	Detectable Stationery
19	Detectable Storage, Mixing & Handling Equipment including Brushes & Brooms
32	Detectable Plasters & Dressings
34	Detectable Safety Knives
42	Detectable Professional Knives
45	Detectable Hygiene & Protective Workwear
54	Detectable Cable Ties
59	Detectable Keyhole Tags & Labels
63	Metal & X-Ray Detector Test Pieces
65	STAINLESS STEEL & ALUMINIUM PRODUCTS
66	Stainless Steel & Aluminium Stationery
75	Stainless Steel & Aluminium Storage, Mixing & Handling Equipment
81	DETECTABLE ENGINEERING PRODUCTS
82	Detectasil® Detectable Silicone Sealant
83	Detectamet Detectable O-Rings & Seals
83	Detectamet Detectable Sifter Balls
83	Detectamet Detectable Silicone Rubber
84	Detectamet Detectable Acetal
84	Detectamet Detectable PTFE
85	Detectamet Detectable Food Grade UHMWPE
85	Detectamet Detectable PA6 Filled
85	Detectamet Detectable Food Grade Belting
86	Detectamet Detectable Polyurethane Belt
86	Detectamet Detectable Polythene
86	Detectamet Detectable Mouse Box
86	Detectable Gasket Scrapers
87	Detectamet Detectable Compounds



Detectamet Ltd.  
Unit 55 Halifax way  
Pocklington Ind Est  
Pocklington, York  
YO42 1NR, UK

Tel: +44 (0)1759 304 200  
Fax: +44(0)1759 305 236  
Email: [sales@detectamet.com](mailto:sales@detectamet.com)  
Live Chat: 8am - 10pm (GMT)



Detectamet Inc.  
5111 Glen Alden Drive  
Richmond  
VA, 23231  
USA

Tel: +1-804-303-1983  
Toll Free: +1-844-820-7244  
Cell: +1-804-370-4579  
Email: [sales.usa@detectamet.com](mailto:sales.usa@detectamet.com)  
Live Chat: 3am - 5pm (EST)

# Metal & X-Ray Detectable Products

## Contents

### DETECTABLE STATIONERY

6	Detectable Plastic Pens (1 Piece & Retractable)
10	Detectable Metal Pens (1 Piece & Retractable)
11	Detectable Mechanical Pencil & Easy Grip Pen Sleeve
11	Lanyards with Breakaway Safety Feature
11	Detectable Marker Pens
12	Detectable Retractable Marker Pens
12	Detectable Touch Screen Pens
13	Detectable Highlighters
14	Detectable Reusable Document Fastener
14	Detectable Stopwatch & Process Timer
15	Detectable Calculators & Holders
15	Detectable Mouse Mat
15	Detectable & Stainless Steel Rulers
16	Detectable Plastic Clipboard & Memo Holder
17	Detectable Scissors
17	Detectable Swipecard Holder
18	Detectable Papergrip
18	Detectable & Non-Detectable Staple Free Stapler

### STORAGE, MIXING & HANDLING EQUIPMENT

21	Detectable Scrapers
23	Detectable Spatulas & Stirrers
23	Detectable Scoops
24	Detectable Jugs
25	Detectable Prover Pockets
25	Detectable Paddles & Mixers
25	Detectable Shovels
26	Detectable Buckets & Dustpans
27	Detectable Disposable Polythene Tote Bin Covers including Stainless Steel Dispensers
28	Detectable Brushes & Brooms including Fully Detectable Resin Set
29	Detectable Stretch Wrap
29	Shadow Boards
29	Detectable Hammer
30	Detectable Plastic Bag Clips
30	Detectable Rubber Bands
31	Detectable Storage Containers & Sampling Cups

### DETECTABLE PLASTERS

33	Metal Detectable Plasters
33	X-Ray Detectable Plasters
33	Detectable Storage Box

### SAFETY KNIVES

35	Detectable Safety Knives
41	Security Cages

### PROFESSIONAL KNIVES

43	Detectable Professional Knives
44	Detectable Pallet Knives
44	Detectable Sharpening Steels
44	Detectable Chopping Boards
44	Security Cages

### DETECTABLE HYGIENE WORKWEAR

47	Detectanet™ Detectable Mobcaps & Balaclava Hoods
47	Detectanet™ Detectable Hairnets & Hairtie
48	Multi Purpose Stainless Steel PPE Dispenser
48	Detectanet™ Detectable Beard Snoods
49	Detectable Disposable Polythene Aprons
49	Detectable Mechanical Nitrile Work Glove
50	Detectable Disposable Food Handling Vinyl Gloves
50	Detectable Deteca-Glove Guard
50	Detectable Glove Dispensers
51	Detectable "Clean Ear" Hygienic Ear Plug System
51	Detectable Expandaband
51	Detectable Earplugs
52	Fully Detectable Sleeve Covers
52	Fully Detectable Shoe Covers
52	Shoe Cover Dispensers
53	Detectable Face Masks
53	Disinfectant & Probe Wipes including Dispensers

### DETECTABLE CABLE TIES

56	Detectable Nylon & Polypropylene Cable Ties
56	Stainless Steel Cable Ties
57	Detectable Cable Clamps & Cable Tidy
57	Stainless Steel & Detectable Cable Tie Mounts
58	Detectable Bag Sealer / Gripper

### DETECTABLE KEYHOLE TAGS & LABELS

61	Detectable Keyhole Tags
61	Stainless Steel Keyhole Tag Dispensers
61	Detectable Plastic Tags
62	Detectable Sequentially Numbered Plastic Tags
62	Detectable Traceability Tags
62	Detectable Food Industry Health & Safety Signs
62	Detectable Plastic ID Tags

### METAL & X-RAY DETECTOR TEST PIECES

64	Metal Detector Test Pieces
64	X-Ray Detector Test Pieces
64	Test Piece Accessories





The Detectamet stationery range has been developed for food processing and similar applications. Made from metal detectable X-Ray visible polypropylene materials which are high impact resistant. Detectamet products, equipment and materials are suitable for packaging and food contact. Our products meet the requirements of the acts, regulations and orders applicable in Europe and the United Kingdom relating to goods supplied including, but not necessarily limited to, the following:

- **1935/2004 - Materials and Articles Intended to Come into Contact with Food**, and all subsequent amendments (and their transposition into National Law).
- **2023/2006 - Good Manufacturing Practice for Materials and Articles Intended to Contact with Food**, and all subsequent amendments (and their transposition into National Law).

Overall Migration Limits are available for the majority of our products. All our inks are non toxic, meeting the requirements of ISO12757-2 (The International Organization for Standardization published standards for ball point and roller ball pens). Declarations of conformity can be issued for all products.

## DETECTABLE STATIONERY

6	Detectable Plastic Pens (1 Piece & Retractable)
10	Detectable Metal Pens (1 Piece & Retractable)
11	Detectable Mechanical Pencil & Easy Grip Pen Sleeve
11	Lanyards with Breakaway Safety Feature
11	Detectable Marker Pens
12	Detectable Retractable Marker Pens
12	Detectable Touch Screen Pens
13	Detectable Highlighters
14	Detectable Reusable Document Fastener
14	Detectable Stopwatch & Process Timer
15	Detectable Calculators & Holders
15	Detectable Mouse Mat
15	Detectable & Stainless Steel Rulers
16	Detectable Plastic Clipboard & Memo Holder
17	Detectable Scissors
17	Detectable Swipecard Holder
18	Detectable Papergrip
18	Detectable & Non-Detectable Staple Free Stapler

**Tel: 01759 304 200**  
**[www.detectamet.co.uk](http://www.detectamet.co.uk)**  
**[orders@detectamet.com](mailto:orders@detectamet.com)**

# Metal Detectable **HD** Pressurised 'Cryo' Pens



Writes under water and in powdery conditions

- Writes upside down
- Works in greasy conditions
- Available in black or blue ink

Works up to 200°

Works down to -20°

Easily refillable

3 clip styles available



Available in 9 housing colours:



Cryo refills are also available in the following housings:

Metal Stick Pen

Stainless Steel Retractable Pen



## Detectable Refillable Retractable Highlighters



LOOK, NO CAP!

- Chisel tip - Produces broad or fine lines ideal for highlighting or underlining
- Metal Detectable
- No cap to lose

Easily Refillable refills sold separately

Special sealing system - Prevents ink from drying out



Available in 5 colours:

**NEW  
PRODUCT**

# elephant

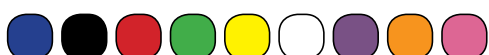
DETECTABLE PEN

*The Elephant range of pens from Detectamet are a huge leap forward in detectable pen design. Manufactured from our detectable polymer, with a slightly textured finish, the elephant range is suitable for use in the vast majority of environments.*



## Elephant Retractable Pen Range

- ▶ **Metal detectable and X-Ray visible**
- ▶ **Triangular cross section for a comfy yet sturdy grip**
- ▶ **Made with food contact approved materials.**
- ▶ **9 colour housing available**



- ▶ **9 colour end caps available**



- ▶ **3 different housing styles**



**Lanyard**



**No Clip**



**Clip**

- ▶ **4 inks types available (standard, fine, pressurised and gel)**
- ▶ **4 colour inks available (pressurised and fine tip are black and blue only)**



*The Elephant pen features a triangular grip to give the user the best performance in all writing conditions.*

**Tel: 01759 304 200**  
**www.detectamet.co.uk**  
**orders@detectamet.com**

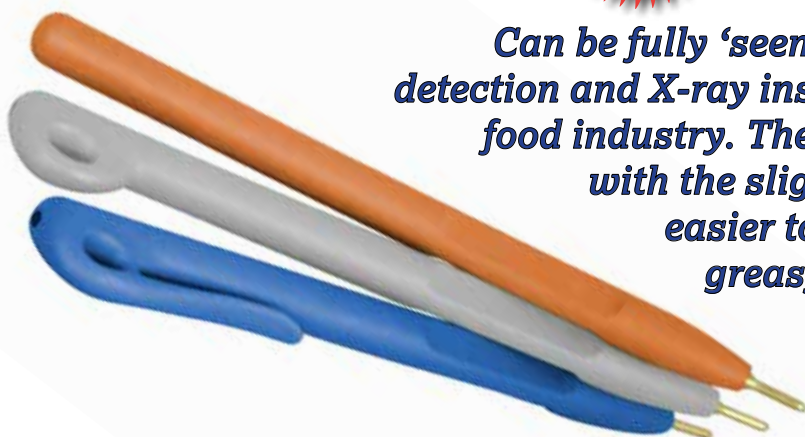


**elephant**  
DETECTABLE PEN

**NEW  
PRODUCT**

## **Detectable One Piece Elephant Stick Pen**

*Can be fully 'seen and rejected' by both metal detection and X-ray inspection systems used in the food industry. The triangular shape combines with the slight textured finish to make it easier to handle in challenging wet, greasy and powdery work places. The body housing comes in 9 colours and is offered in three designs of body.*



**Detectamet**  
FOOD SAFE DETECTABLE PRODUCTS

**HD PEN**

## **A REVOLUTION IN DETECTABLE PEN DESIGN**



- Sits well in the hand with natural balance and feel
- Slightly textured finish for use in wet and greasy environments
- Refillable
- Stainless Steel return spring mechanism to give continuous performance
- Available in three housing styles

**4 ink refills are available in the HD Pen.**

**STANDARD** - Using our super reinforced nibs and available in Black, Blue, Red or Green ink colour.

**PRESSURISED 'CRYO'** - Detectamet's highest grade refill. Will continue to write until the ink has run out in almost all conditions.

Available in Black or Blue ink colour.

**GEL** - is ideal for use in cold and chilly conditions, including freezers & cold stores. Available in Black, Blue, Red or Green ink.

**FINE TIP** - has been developed for users who require extremely fine writing without losing any of its sharpness. Available in Black or Blue ink colour.

**Detectamet**  
DETECTABLE FOOD SAFETY PRODUCTS



## Detectable Economy Retractable Pen

The new Standard Economy Pen from Detectamet incorporates all the basic requirements needed to reduce the risks of product contamination by using detectable equipment. This refillable and retractable pen is available with a blue, black, red or green basic ink in an all metal refill. The blue shell of each pen will have an end cap to match the colour of the ink.

The pen and end cap are made from a plastic polymer that offers double detectability which means that all of the pen, or broken pieces can be identified by standard metal detectors and X-ray systems. Pressing the strong pocket clip will initiate retraction and the ridged grip improves the writers hold on the pen.

CODE	DESCRIPTION	PACK QTY
125-P01-I01	Blue Ink	50
125-P01-I02	Black Ink	50
125-P01-I03	Red Ink	50
125-P01-I04	Green Ink	50

## 4 Colour Detectable Retractable Pen

Four ink colours in one detectable pen. Do you need four different pens so you can write colour coded notes, marks and signatures?

This time saving design can save you the hassle of looking for another pen. The new Detectamet pen can hold a red, green, blue AND black ink cartridge all in the one detectable plastic shell. Each cartridge has an easy write fine nib and can be refilled separately as required.

CODE	DESCRIPTION	PACK QTY
108-A05	Detectable retractable pen - 4 ink colour	50

## Detectable One Piece HD Stick Pens

Our most economical detectable pen, Detectamet Stick pens are suitable for many applications, ideal for use in ambient working temperatures and a clean environment, or where a one piece pen is stipulated. Now with new and improved high quality refills. Available in metal detectable and x-ray visible.

CODE	DESCRIPTION	PACK QTY
116-I01-C101-PA01	Blue Ink, Blue Housing, With Pocket Clip	50
116-I01-C101-PA02	Blue Ink, Blue Housing, Without Clip	50
116-I01-C101-PA03	Blue Ink, Blue Housing, With Lanyard Attachment	50
116-I02-C101-PA01	Black Ink, Blue Housing, With Pocket Clip	50
116-I02-C101-PA02	Black Ink, Blue Housing, Without Clip	50
116-I02-C101-PA03	Black Ink, Blue Housing, With Lanyard Attachment	50
116-I03-C101-PA01	Red Ink, Blue Housing, With Pocket Clip	50
116-I03-C101-PA02	Red Ink, Blue Housing, Without Clip	50
116-I03-C101-PA03	Red Ink, Blue Housing, With Lanyard Attachment	50
116-I04-C101-PA01	Green Ink, Blue Housing, With Pocket Clip	50
116-I04-C101-PA02	Green Ink, Blue Housing, Without Clip	50
116-I04-C101-PA03	Green Ink, Blue Housing, With Lanyard Attachment	50

## Detectable 'SP Style' Stick Pen

Due to popular demand the new Detectamet 'SP' Stick Pen has been designed for those customers wanting a product which is more appealing to the eye. Suitable for visitors and factory managers. Made with metal detectable ABS. Available in blue housing with a choice of blue, black, red & green ink. Available without clip only.

CODE	DESCRIPTION	PACK QTY
119-I01-PA02	Detectable 'SP style' stick pen - Blue Ink	50
119-I02-PA02	Detectable 'SP style' stick pen - Black Ink	50
119-I03-PA02	Detectable 'SP style' stick pen - Red Ink	50
119-I04-PA02	Detectable 'SP style' stick pen - Green Ink	50



Ink Colour



Housing Colour



Ink Colour (4 in 1)



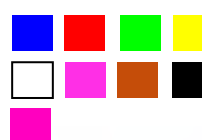
Housing Colour



Ink Colour



Housing Colour



Ink Colour



Housing Colour



**Tel: 01759 304 200**  
**www.detectamet.co.uk**  
**orders@detectamet.com**

**NEW  
PRODUCT**



Stainless Steel  
Manager's Pen

Ink Colour



**HOT  
PRODUCT**



Stainless Steel  
Pen

## Detectable Stainless Steel Retractable Pens

Offering all the benefits of the Detectamet retractable pen and manufactured from Stainless Steel. Suitable for a range of food related environments. Includes either standard ink, pressurised ink or our **NEW** Gel & Fine Point inks.

CODE	DESCRIPTION	PACK QTY
<b>Stainless Steel Manager's Pen</b>		
113-A05-I01	Blue - Standard Ink	10
113-A05-I02	Black - Standard Ink	10
113-A05-I03	Red - Standard Ink	10
113-A05-I04	Green - Standard Ink	10
113-A05-I21	Blue - Gel Ink	10
113-A05-I22	Black - Gel Ink	10
113-A05-I23	Red - Gel Ink	10
113-A05-I24	Green - Gel Ink	10
113-A05-I11	Blue - Pressurised Ink	10
113-A05-I12	Black - Pressurised Ink	10
113-A05-I31	Blue - Fine Tip Ink	10
113-A05-I32	Black - Fine Tip Ink	10
<b>Stainless Steel Pen</b>		
114-A05-I01	Blue - Standard Ink	10
114-A05-I02	Black - Standard Ink	10
114-A05-I03	Red - Standard Ink	10
114-A05-I04	Green - Standard Ink	10
114-A05-I21	Blue - Gel Ink	10
114-A05-I22	Black - Gel Ink	10
114-A05-I23	Red - Gel Ink	10
114-A05-I24	Green - Gel Ink	10
114-A05-I11	Blue - Pressurised Ink	10
114-A05-I12	Black - Pressurised Ink	10
114-A05-I31	Blue - Fine Tip Ink	10
114-A05-I32	Black - Fine Tip Ink	10

## Detectable Metal Refillable Food Factory One Piece Stick Pens

Detectamet metal stick pen is made using 2 different types of metal to offer magnetic and metal detectable/X-Ray detectable qualities. Available with pocket clip, without pocket clip or with ring. Detectamet offer 4 types of metal refill to suit a range of requirements. Standard refill, Pressurised refill as used in our detectable 'Cryo' pen, Gel refill as used in our detectable gel pen and a Fine Tip refill as used in our detectable fine tip pen.



Ink Colour



CODE	DESCRIPTION	PACK QTY
115M-I01	Blue Standard Ink	50
115M-I02	Black Standard Ink	50
115M-I03	Red Standard Ink	50
115M-I04	Green Standard Ink	50
115M-I21	Blue Gel Ink	50
115M-I22	Black Gel Ink	50
115M-I23	Red Gel Ink	50
115M-I24	Green Gel Ink	50
115M-I11	Blue Pressurised Cryo Ink	50
115M-I12	Black Pressurised Cryo Ink	50
115M-I31	Blue Fine Tip Ink	50
115M-I32	Black Fine Tip Ink	50

## Lanyard With Breakaway Safety Feature

The plain lanyards are available with a metal hook and is made from a 10mm woven polyester lanyard with a breakaway safety feature included as standard. The drop length of the lanyard is approx. 50cm (half of the lanyard length plus clip).

CODE	DESCRIPTION	PACK QTY
154-P01-S082	Lanyard	10

## Detectable Mechanical Pencil

Adds a new dimension to the claims of using "all due diligence". The Detectamet Pencil would suit a whole range of other applications and environments in modern industries. The outer body being made of blue metal for visual detection. The clip, nib and top part of the pencil is made from a magnetic metal. Pencil lead 2B with soft writing 0.5mm diameter. 60mm length.

CODE	DESCRIPTION	PACK QTY
131-C100-I50	metal case - 0.5mm 2B	10
131B-T201-I50	spare pencil leads - 0.5mm 2B	1 10

## Detectable Detectagrip Pen Sleeve

Stops pens and other instruments from rolling and is ergonomically designed for ease of writing or manual use! Specifically designed for the food and pharmaceutical industries and can be used as part of HACCP.

CODE	DESCRIPTION	PACK QTY
123-P01-S060	triangular rubber - single pen sleeve	10
123-P01-S084	triangular rubber - pen sleeve x1 metre length	1

## Detectable Fine Permanent Marker Pens

Using high intensity permanent ink, the fine marker refills are housed in the Detectamet pen casing, this pen is a unique product to Detectamet. The Detectamet Fine Marker pen is suitable for writing onto labels (including all Detectamet Keyhole labels and plastic labels), CD Roms and shiny/greasy paper. Everything you would use a standard fine marker pen for!

- Store horizontally

CODE	DESCRIPTION	PACK QTY
147-A06-P01	fine point - blue ink - nibs are 2.2 x 31.5 mm	10
147-A06-P02	fine point - black ink - nibs are 2.2 x 31.5 mm	10
147-A06-P03	fine point - red ink - nibs are 2.2 x 31.5 mm	10
147-A06-P04	fine point - green ink - nibs are 2.2 x 31.5 mm	10

## Detectable Permanent Marker Pens

A robust non toxic permanent marker pen for bold writing on all surfaces. The refills are housed in the detectable sealed unit pen casing. Available in bullet or chisel tip.

Permanent marker pens are suitable for use in all food application environments.

CODE	DESCRIPTION	PACK QTY
146-A06-P01-A08	chisel tip - blue ink	10
146-A06-P02-A08	chisel tip - black ink	10
146-A06-P03-A08	chisel tip - red ink	10
146-A06-P04-A08	chisel tip - green ink	10
146-A06-P01-A07	bullet tip - blue ink	10
146-A06-P02-A07	bullet tip - black ink	10
146-A06-P03-A07	bullet tip - red ink	10
146-A06-P04-A07	bullet tip - green ink	10







Can be fitted with a split ring for easy attachment to safety chains/lanyards.



Housing Colour



## Detectable Whiteboard Marker Pens

A robust non toxic dry erase whiteboard marker pen. The refills are housed in the detectable sealed unit pen casing. Available in bullet or chisel tip.

Whiteboard marker pens are suitable for use in all food application environments.

- Store horizontally

CODE	DESCRIPTION	PACK QTY
145-A06-P01-A08	chisel tip - blue ink	10
145-A06-P02-A08	chisel tip - black ink	10
145-A06-P03-A08	chisel tip - red ink	10
145-A06-P04-A08	chisel tip - green ink	10
145-A06-P01-A07	bullet tip - blue ink	10
145-A06-P02-A07	bullet tip - black ink	10
145-A06-P03-A07	bullet tip - red ink	10
145-A06-P04-A07	bullet tip - green ink	10

## Detectable Retractable Permanent Marker Pens

A robust non toxic permanent marker pen for bold writing on all surfaces. The refills are housed in the detectable retractable worldwide patented housing design. This means no cap to lose! Permanent marker pens are suitable for use in all food application environments.

CODE	DESCRIPTION	PACK QTY
146-A05-P01-A07	Blue Ink - Bullet Tip	10
146-A05-P02-A07	Black Ink - Bullet Tip	10
146-A05-P03-A07	Red - Bullet Tip	10
146-A05-P04-A07	Green - Bullet Tip	10
146-A05-P01-A08	Blue - Chisel Tip	10
146-A05-P02-A08	Black - Chisel Tip	10
146-A05-P03-A08	Red - Chisel Tip	10
146-A05-P04-A08	Green - Chisel Tip	10

## Detectable Retractable Whiteboard Markers

A robust non toxic dry erase whiteboard marker pen. The refills are housed in the detectable retractable worldwide patented housing design. This means no cap to lose! Whiteboard marker pens are suitable for use in all food application environments.

- Store horizontally

CODE	DESCRIPTION	PACK QTY
145-A05-P01-A07	Blue Ink - Bullet Tip	10
145-A05-P02-A07	Black Ink - Bullet Tip	10
145-A05-P03-A07	Red - Bullet Tip	10
145-A05-P04-A07	Green - Bullet Tip	10
145-A05-P01-A08	Blue - Chisel Tip	10
145-A05-P02-A08	Black - Chisel Tip	10
145-A05-P03-A08	Red - Chisel Tip	10
145-A05-P04-A08	Green - Chisel Tip	10

## Detectable Touch Screen Pen

The 2-in-1 detectable touch screen stylus with twist action retractable ballpoint pen is a universal stylus pen that is compatible with devices such as Android phones & tablets as well as devices with a capacitive touch screen like the iPhone & iPad. Available with Black, Blue, Red or Green ink and Blue housing colour. Durable and responsive tip, Helps avoid fingerprints and smudges, Works on all capacitive touch screens.

CODE	DESCRIPTION	PACK QTY
121-T202-C101-I01	Detectable Touch Screen Pen - Blue Ink	10
121-T202-C101-I02	Detectable Touch Screen Pen - Black Ink	10
121-T202-C101-I03	Detectable Touch Screen Pen - Red Ink	10
121-T202-C101-I04	Detectable Touch Screen Pen - Green Ink	10



## Detectable PDA Stylus

Touch screen personal digital assistant stylus. This is a one piece stylus - no separate parts. Made to be compatible with most PDA touchscreens (These are pen based computers made by Palm, Handspring, Hewlett Packard, Casio and others). Non scratching.

The Detectamet stylus is made of a firm but non-scratching plastic to "write" on today's very popular Personal Digital Assistants (PDAs).

CODE	DESCRIPTION	PACK QTY
122-A65	Pen Style PDA Stylus	10

## Detectable Fluorescent Highlighters

A robust non toxic fluorescent highlighter pen suitable for paper/copy/fax. The refills are housed in the detectable sealed unit pen casing. Chisel tip only. detectable fluorescent highlighter pens are suitable for use in all food application environments.

CODE	DESCRIPTION	PACK QTY
150-A06-P05-A08	Highlighter Non Retractable - Yellow Chisel Tip	5
150-A06-P09-A08	Highlighter Non Retractable - Pink Chisel Tip	5
150-A06-P04-A08	Highlighter Non Retractable - Green Chisel Tip	5
150-A06-P01-A08	Highlighter Non Retractable - Blue Chisel Tip	5
150-A06-P08-A08	Highlighter Non Retractable - Orange Chisel Tip	5



Ink Colour



## Detectable Retractable Refillable Highlighter Pens

A robust non toxic refillable fluorescent highlighter pen suitable for paper/copy/fax. The refills are housed in the detectable retractable worldwide patented housing design. This means no cap to lose! Chisel tip only. Detectable fluorescent highlighter pens are suitable for use in all food application environments. Also available as single colour packs.

CODE	DESCRIPTION	PACK QTY
150-A05-P05-A08	Highlighter Retractable - Yellow Chisel Tip	5
150-A05-P09-A08	Highlighter Retractable - Pink Chisel Tip	5
150-A05-P04-A08	Highlighter Retractable - Green Chisel Tip	5
150-A05-P01-A08	Highlighter Retractable - Blue Chisel Tip	5
150-A05-P08-A08	Highlighter Retractable - Orange Chisel Tip	5
156-P05-A08	Highlighter Refill- Yellow Chisel Tip	5
156-P09-A08	Highlighter Refill- Pink Chisel Tip	5
156-P04-A08	Highlighter Refill - Green Chisel Tip	5
156-P01-A08	Highlighter Refill - Blue Chisel Tip	5
156-P08-A08	Highlighter Refill - Orange Chisel Tip	5



Refillable with  
refills sold separately

Ink Colour



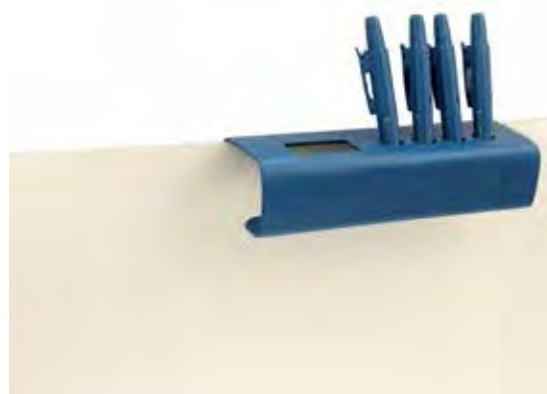
## Detectable Marker Pen Holder

Detectamet's NEW marker pen holder is designed to hold up to 4 Marker Pens & has space for a Whiteboard Eraser. Suitable for Detectamet's Detectable range of Whiteboard & Permanent Marker Pens.

Available with or without a 100% Stainless Steel Clipboard Clip attached, ideal for storing papers & documents.

- Height 175mm (7")
- Width 230mm (9")
- Hook Size 55mm x 55mm x 35mm (2" x 2" x 1 1/3")
- Marker Pen Hole Diameter 20mm (3/4")
- Whiteboard Eraser Hole 50mm x 25mm (2" x 1")

CODE	DESCRIPTION	PACK QTY
157-A02	Marker Pen Holder - Without Clipboard Clip	1
157-A145	Marker Pen Holder - With 100% Stainless Steel Heavy Duty Clipboard Clip	1





## Detectable Reusable Document Fastener

We understand your dilemma of taking documents around the factory departments - no staples allowed, no paperclips allowed. The Detectamet Document Fastener is a safer way to overcome this problem.

Manufactured from Detectamet Food Safe Detectable Plastic this unique product is capable of fastening up to 200 sheets of 75gsm paper therefore eliminating the need for staples, paperclips and other potential foreign body contaminants.

CODE	DESCRIPTION	PACK QTY
209-A65-A72-P01	Reusable Detectable Document Fastener	10



## Detectable Stopwatches and Timers

The Detectable Electronic Timer and Stopwatches are compact and lightweight. The outer case and the buttons are made from detectable plastic and are small enough to hold in your hand in your pocket or attached to a clipboard.

CODE	DESCRIPTION	PACK QTY
201-A65-P01-A55	Detectable Stopwatch - c/w safety chain	1
215-P01	Detectable Process Timer	1



## Detectable Desktop Calculator

This electronic desktop calculator is compact and lightweight and the plastic case is made from Detectamet's detectable plastic. It measures approximately 15cm x 12cm and offers a large number display and for gloved hands has easy to find large buttons. It incorporates standard basic button controls and automatic power off to save battery power - Battery Powered only DC1.5V(AAA)

Please note the life of your battery will depend on your working environment.

CODE	DESCRIPTION	PACK QTY
202D-P01	Detectable Desktop Calculator	1



Detectable Handheld Calculator 202H-P01



Detectable Pocket Calculator 202P-P01

## Detectable Handheld & Pocket Calculator

The Electronic hand held calculator is compact and lightweight. The plastic casing is detectable. Designed to be held in your hand/pocket or attached to a clipboard. Measures 120mm (4 1/4") x 75mm (3").

This calculator can be used with or without safety chain due to the special design. Handheld Electronic Calculator - Battery Powered only DC AG101.5V

Please note the life of your battery will depend on your working environment.

CODE	DESCRIPTION	PACK QTY
202H-P01	Detectable Handheld Calculator	1
202P-P01	Detectable Pocket Calculator	1

## Detectable Calculator Holder

Available in 2 sizes to fit both the Detectable Desktop Calculator and Detectable Handheld Calculator. The New Detectable Calculator Holder keeps calculators safe and secure when not in use, and easy to locate when needed.

Can be manufactured to include magnetic strips for easy and convenient attachment to most ferrous surfaces such as whiteboards, machines or cabinets.

- Easy to clean with drainage slots in the base of the unit
- Wall mountable or with integrated hanging hook
- Available in 8 Colours: Blue, Black, Red, Green, Yellow, White, Purple & Orange.

CODE	DESCRIPTION	PACK QTY
200D-P01	Detectable Desktop Calculator Holder Blue	1
200H-P01	Detectable Handheld Calculator Holder Blue	1



## Detectable Mouse Mat

Manufactured from Food Safe Detectable Material, specifically developed for the food and pharmaceutical industries. This unique product can be used as part of HACCP. Dimensions: 210mm x 160mm x 3mm thick.

CODE	DESCRIPTION	PACK QTY
203-A65-P01-S232	Metal Detectable Mouse Mat	1

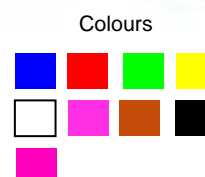


## Detectable Keyboard Stand

Detectamet's detectable keyboard station can be used to prevent some of the problems associated with Work-Related Upper Limb Disorder or Repetitive Strain Injury (RSI).

Manufactured from metal detectable and x-ray visible plastic suitable for use in production area environments within the food processing industry. Available in detectamet's range of 9 Detectable colours.

CODE	DESCRIPTION	PACK QTY
509-P01	Detectable Keyboard Stand - Blue	1
509-P02	Detectable Keyboard Stand - Black	1
509-P03	Detectable Keyboard Stand - Red	1
509-P04	Detectable Keyboard Stand - Green	1
509-P05	Detectable Keyboard Stand - Yellow	1
509-P06	Detectable Keyboard Stand - White	1
509-P07	Detectable Keyboard Stand - Purple	1
509-P08	Detectable Keyboard Stand - Orange	1
509-P09	Detectable Keyboard Stand - Pink	1



## Detectable Rulers

Detectable Plastic Rulers manufactured from Detectamet food safe Detectable Plastic.

Benefits Include: Metal Detectable. Available in 2 sizes: 30cm / 12" & 15cm / 6". Measurements (Imperial & Metric Scale) are moulded down either side of the ruler. Blue Colour. Bevelled Edge acts as an excellent drawing and drafting guide. Easy to clean, food safe, durable and can be used as part of HACCP.

CODE	DESCRIPTION	PACK QTY
204-P01-S069-X27	15cm / 6" Ruler	5
204-P01-S075-X27	30cm / 12" Ruler	5





## Stainless Steel Rulers

High quality metal rulers manufactured from Stainless Steel.  
Available in lengths of 150mm (6"), 300mm (12") & 450mm (18").  
Features a conversion table on the reverse side.

CODE	DESCRIPTION	PACK QTY
208-P32-S069-X27	15cm / 6" Ruler	1
208-P32-S075-X27	30cm / 12" Ruler	1
208-P32-S080-X27	45cm / 18" Ruler	1

## Detectable Plastic Clipboard

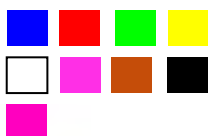
Made using Detectamet's unique detectable plastic polymer.

- Extremely lightweight
- Landscape or Portrait
- Ability to wipe clean
- Available with a choice of 4 clip types
- Stainless steel clip can be etched with your company details.

CODE	DESCRIPTION	PACK QTY
300-O07-P01-A10	A3 portrait, blue, with Stainless Steel HD Clip	1
300-O07-P01-A94	A3 portrait, blue, with Jumbo Economy Clip	1
300-O07-P01-A11	A3 portrait, blue, with Stainless Steel Economy Clip	1
300-O07-P01-A12	A3 portrait, blue, with Zinc Plated Economy Clip	1
300-O07-P01-A13	A3 portrait, blue, with Zinc Plated Pen Holder Clip	1
300-O06-P01-A10	A4 portrait, blue, with Stainless Steel HD Clip	1
300-O06-P01-A94	A4 portrait, blue, with Jumbo Economy Clip	1
300-O06-P01-A11	A4 portrait, blue, with Stainless Steel Economy Clip	1
300-O06-P01-A12	A4 portrait, blue, with Zinc Plated Economy Clip	1
300-O06-P01-A13	A4 portrait, blue, with Zinc Plated Pen Holder Clip	1
300-O08-P01-A10	A5 portrait, blue, with Stainless Steel HD Clip	1
300-O08-P01-A94	A5 portrait, blue, with Jumbo Economy Clip	1
300-O08-P01-A11	A5 portrait, blue, with Stainless Steel Economy Clip	1
300-O08-P01-A12	A5 portrait, blue, with Zinc Plated Economy Clip	1
300-O08-P01-A13	A5 portrait, blue, with Zinc Plated Pen Holder Clip	1



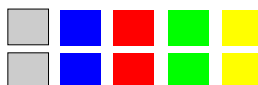
Colour



**NEW  
PRODUCT**

Jumbo Economy Clip

Stainless Steel HD Clip Colours  
Economy Zinc Plated Clip Colours



## Detectable Magnetic Clipboards

The new Detectamet range of magnetic ring binders and clipboards are very useful for presenting A4, A3 or A5 documents in portrait or landscape orientation.

The strong magnets are added to satisfy each customer's requirement so they do not slide over the surface and can stick to most ferrous surfaces such as whiteboards, metal partitions, machines or cabinets.

Magnetic ring binders and clipboards can be used when implementing visual management on the work floor.

Simply add the magnetic capability to your clip board specification when placing your order.



**NEW  
PRODUCT**



## Portable 'Cling Easy' Whiteboard

Detectamet are now able maximize the use of our unique range of hygienic clipboards, ring binders, lever arch files, mobile desks, memo holders etc. by applying a new and revolutionary whiteboard surface to each and every item. Detectamet will supply the New 'Cling Easy' Whiteboard material separately on a roll of 1000mm x 1200mm or 1000mm x 3000mm.

CODE	DESCRIPTION	PACK QTY
306-S257	A3 Size Clipboards - Reverse Side	1
306-S256	A4 Size Clipboards - Reverse Side	1
306-S258	A5 Size Clipboards - Reverse Side	1

## Detectable Wall Mounted File Pockets

The Detectable Stackable Wall Mountable File Pockets/Holder A4 from Detectamet is the ideal way for storing your documents, files and clipboard holders. The stackable design allows for easy colour coordination between different department/ areas of the workplace as well as helping your HACCP requirements.

CODE	DESCRIPTION	PACK QTY
322-P01-O05	Detectable Wall Mountable File Holder A4 Landscape	1
322-P01-O06	Detectable Wall Mountable File Holder A4 Portrait	1
322-P01-O08	Detectable Wall Mountable File Holder A5 Portrait	1
322-P01-O21	Detectable Wall Mountable File Holder A5 Landscape	1

## Detectable Scissors

General Purpose Scissors. Blades manufactured from Stainless Steel. Size: 8.5 inch / 210mm.  
Food Safe Detectable Plastic Handles.

By law we cannot sell this product to any person under the age of 18.

CODE	DESCRIPTION	PACK QTY
206-S237-P01-Q01	Food Safe Detectable Scissors	1

## Detectable Swipe Card Holder

Swipe Card access systems are a popular and simple but effective way to control access. Generally used for commercial buildings within the food, pharmaceutical industries etc; a simple swipe or proximity card would be presented to a card reader located outside the door. When the card is read by the card reader the door will automatically unlock for a predetermined time. Available in blue, red or yellow and with or without safety chain. Other colours available on request. NEW DESIGN means can now be used as Portrait or Landscape.

CODE	DESCRIPTION	PACK QTY
212-A65-A56-P01	Swipe Card Holder - Blue	25
212-A65-A55-P01	Swipe Card Holder - Blue with Safety Chain	25

## Detectable Retractable Badge Reel

The retractable badge reel is a fantastic way to keep your ID Card/keys attached to your clothing and have them handy when you need them.

- Allows you to keep important items secure and on hand at all times
- Handy back clip attaches easily to your clothing
- The included strong nylon cord extends up to 700mm (27 1/2").

CODE	DESCRIPTION	PACK QTY
217-A65	Detectable Retractable Badge Reel	4



## Detectable Split Ring & Safety Chain

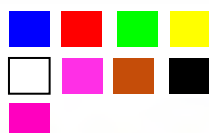


Detectamet Stainless Steel Split ring & Chains are suitable for food applications, and anywhere a safety chain is required. The Chain supplied as standard is 30" long and nickel free, the design of the chain will allow it to break if caught in machinery etc. Longer lengths available on request. The split ring is supplied as standard 20mm diam. Suitable for use with all Detectamet pens that have a clip, Keyfobs etc

CODE	DESCRIPTION	PACK QTY
153-T203	Split Ring	10
155-P44-S083-A93	30" (762mm) Stainless Steel Safety Chain	10
155-P44-S083-A94	Stainless Steel Safety Chain 1 metre length	1
152-P32	Stainless Steel Connecting Clasp	50



Colour



## Detectable Paper Clip

Jumbo paperclip is made from detectable polymer and is suitable for a range of applications (has been used as a detectable keyfob) as well as complimenting our stapless stapler when larger quantities of paper need to be temporarily secured.

CODE	DESCRIPTION	PACK QTY
210-S243-P01	80mm x 40mm - Detectable Paper Clip - Blue	30

## Detectable & Non-Detectable Staple Free Stapler

Eliminate the risk of contamination caused by wayward staples. These unique products cut, fold & securely fix from 5 to 8 sheets of paper and are available in a range of colours (detectable in blue only). Contained durable unit for added contamination reduction - available in detectable or non-detectable material. Easy to use and suitable for all industries. Can be used in compliance with environmental policies.



Colour



CODE	DESCRIPTION	PACK QTY
207-A65-T184-P01	Detectable (up to 5 sheets) - Blue	5
207-A66-T145-P01	Handheld HD (up to 8 Sheets) - Black	1
207-A66-T145-P04	Handheld HD (up to 8 Sheets) - Green	1
207-A66-T145-P12	Handheld HD (up to 8 Sheets) - Light Blue	1
207-A66-T145-P09	Handheld HD (up to 8 Sheets) - Pink	1
207-A66-T145-P06	Handheld HD (up to 8 Sheets) - White	1
207-A66-T146-P13	Handheld MD (up to 6 Sheets) - Light Green	1
207-A66-T146-P12	Handheld MD (up to 6 Sheets) - Light Blue	1
207-A66-T146-P14	Handheld MD (up to 6 Sheets) - Light Pink	1
207-A66-T146-P10	Handheld MD (up to 6 Sheets) - Brown	1
207-A66-T146-P06	Handheld MD (up to 6 Sheets) - White	1
207-A66-T301-P02	Desktop (up to 10 Sheets) - Black	1
207-A66-T302-P01	Handheld Paper Crimper (up to 5 Sheets) - Blue	1

**NEW  
PRODUCT**



DTM 1000 MD



Detectamet storage, mixing and handling equipment has been developed for food processing and similar applications. Made from metal detectable X-Ray visible polypropylene materials which are high impact resistant. Detectamet products, equipment and materials are suitable for packaging and food contact. Our products meet the requirements of the Acts, regulations and orders applicable in Europe and the United Kingdom relating to goods supplied including, but not necessarily limited to, the following:

- **1935/2004 - Materials and Articles Intended to Come into Contact with Food**, and all subsequent amendments (and their transposition into National Law).
- **2023/2006 - Good Manufacturing Practice for Materials and Articles Intended to Contact with Food**, and all subsequent amendments (and their transposition into National Law).

Overall Migration Limits are available for the majority of our products.

#### STORAGE, MIXING & HANDLING EQUIPMENT INCLUDING BRUSHES & BROOMS

21	Detectable Scrapers
23	Detectable Spatulas & Stirrers
23	Detectable Scoops
24	Detectable Jugs
25	Detectable Prover Pockets
25	Detectable Paddles & Mixers
25	Detectable Shovels
26	Detectable Buckets & Dustpans
27	Detectable Disposable Polythene Tote Bin Covers including Stainless Steel Dispensers
28	Detectable Brushes & Brooms including Fully Detectable Resin Set
29	Detectable Stretch Wrap
29	Shadow Boards
29	Detectable Hammer
30	Detectable Plastic Bag Clips
30	Detectable Rubber Bands
31	Detectable Storage Containers & Sampling Cups



# Metal Detectable Powder Scoops

Available  
in 3 sizes



- ▶ Easy to Clean
- ▶ One piece construction
- ▶ Flat bottom for stability
- ▶ For scooping powders or liquids
- ▶ Made in Britain



## Detectable Scoops

- ▶ Tapered Edge for better handling performance
- ▶ Incorporates a slotted hole to enable the user to store hygienically in between use



Available  
in 4 sizes

Available in 9  
colours:





## Detectable Flexible Scrapers

The products in this range are produced from specially formulated materials based on high impact food safe polypropylene and nylon. This material has the ability to be detected and rejected by typical metal detection and x-ray machines used in the food processing industry. To bring this range into line with typical colour coding systems, our metal detectable range is available in blue, red, green, yellow, white, purple, orange, black & pink. Available with Leading Edge technology for a more robust scraping edge (blue only).

CODE	DESCRIPTION	PACK QTY
523-S089-T103-P01	Detectable Polypropylene Flexi Scraper - Small	5
523-S091-T103-P01	Detectable Polypropylene Flexi Scraper - Large	5
525-S089-T103	Detectable Leading Edge Flexi Scraper - Small	5
525-S091-T103	Detectable Leading Edge Flexi Scraper - Large	5

## Detectable Serrated Edge Flexible Scrapers

Produced from specially formulated materials based on high impact food safe polypropylene, the scrapers are suitable for a wide range of applications including baking, royal icing and buttercream icing. Featuring a tapered edge for creating a smooth finish and a serrated edge for creating a textured finish, our scrapers are guaranteed to help you achieve a professional result.

CODE	DESCRIPTION	PACK QTY
523-S089-T097-P01	Serrated Edge Flexi Scraper - small	5
523-S091-T097-P01	Serrated Edge Flexi Scraper - large	5



Features serrated scraping edge ....



.... as well as 3 tapered scraping edges.

## Scraper With Detectable Handle

The products in this range are all produced from a specially formulated material based on high impact food safe polypropylene. This material has the ability to be detected and rejected by typical metal detection and x-ray machines used in the food processing industry. The blade on these scrapers are made from stainless steel for more robust applications.

570-P32-T095 Size - Blade 65mm x 120 mm, Handle 20mm x 120mm x 70mm.

570-P32-T096 Size - Blade 80mm x 150 mm, Handle 50mm x 150mm x 70mm.

CODE	DESCRIPTION	PACK QTY
570-P32-T095	flexi scraper - s/s with detectable handle	1
570-P32-T096	rigid scraper - s/s with detectable handle	1

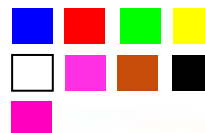
## Detectable Hand Scraper

The products in this range are produced from specially formulated materials based on high impact food safe polypropylene. This material has the ability to be detected and rejected by typical metal detection and x-ray machines used in the food processing industry. Available in blue, red, green, yellow, white, purple, orange, black & pink. Available with Leading Edge technology for a more robust scraping edge (blue only).

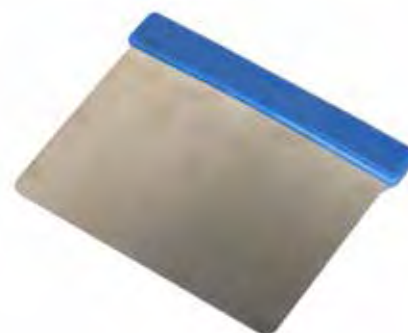
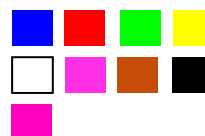
CODE	DESCRIPTION	PACK QTY
523-S104-T025-P01	3" Wide Polypropylene Hand Scraper	5
523-S105-T025-P01	4" Wide Polypropylene Hand Scraper	5
525-S422-T205	3" Wide Leading Edge Hand Scraper	5
525-S429-T205	4" Wide Leading Edge Hand Scraper	5
523-S103-T205-P01	2" Wide Flexible Hand Scraper - Blue Only	5



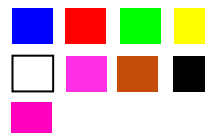
Colour



Colour



Colour





## Metal Hand Scraper

Available in 3 styles and 3 sizes.

Incorporating grade 304 stainless steel blade and aluminium handle.

Incorporating grade 304 stainless steel blade and grade 304 stainless steel handle.

Incorporating brass blade and grade 304 stainless steel handle.

CODE	DESCRIPTION	PACK QTY
<b>stainless steel blade and aluminium handle.</b>		
586-W03-Q03-S421	Blade Size 125 X 37mm (1½")	1
586-W03-Q03-S422	Blade Size 125 X 50mm (2")	1
586-W03-Q03-S423	Blade Size 125 X 75mm (3")	1
<b>stainless steel blade and stainless steel handle</b>		
586-W02-Q03-S421	Blade Size 125 X 37mm (1½")	1
586-W02-Q03-S421	Blade Size 125 X 50mm (2")	1
586-W02-Q03-S421	Blade Size 125 X 75mm (3")	1
<b>brass blade and stainless steel handle</b>		
586-W02-Q02-S421	Blade Size 125 X 37mm (1½")	1
586-W02-Q02-S422	Blade Size 125 X 50mm (2")	1
586-W02-Q02-S423	Blade Size 125 X 75mm (3")	1

## Metal Hand Scraper With Detectable Handle

New Hygienic Food Safe Metal Blade Scrapers specifically developed for the Food and Pharmaceutical Industries, these new scrapers are available with either Stainless Steel or Brass Blades in 1.5 inch (38mm), 2 inch (50mm), 3 inch (76mm) widths. (Other Sizes Available Upon Request).

The New Detectamet Scrapers come with the added benefit of Food Safe Easy to Grip Metal Detectable Plastic Handles!

CODE	DESCRIPTION	PACK QTY
586-W11-Q03-S421	1.5 inch (37mm) Wide Stainless Steel Blade	1
586-W11-Q03-S422	2 inch (50mm) Wide Stainless Steel Blade	1
586-W11-Q03-S423	3 inch (75mm) Wide Stainless Steel Blade	1
586-W11-Q02-S421	1.5 inch (37mm) Wide Brass Blade	1
586-W11-Q02-S422	2 inch (50mm) Wide Brass Blade	1
586-W11-Q02-S423	3 inch (75mm) Wide Brass Blade	1

## Detectable Handle Stainless Steel Gasket Scraper

High quality heavy duty detectable gasket scrapers. Ideal for gasket scraping, removal of rust, grease or other similar debris from difficult to reach areas.

Made with a stainless steel blade for extra strength, durability and long service life. The handle is easy to grip and manufactured from Detectamet's detectable plastic.

CODE	DESCRIPTION	PACK QTY
586-W11-Q03-S235	Stainless Steel Scraper - 20mm wide blade	1
586-W11-Q03-S234	Stainless Steel Scraper - 16mm wide blade	1
586-W11-Q03-S233	Stainless Steel Scraper - 12mm wide blade	1

## Stainless Steel Dough Cutter

This handy tool sections dough for pie crusts and other baked favorites and cleans moist dough from your floured board. The cutting board scraper is also ideal as a flipper to lift delicate foods in the pan or from cookie sheets.

Blade dimensions: 150mm (6") x 90mm (3 1/2"). Handle diameter: 50mm (2").

CODE	DESCRIPTION	PACK QTY
519-P32-T160	Stainless Steel Dough Cutter	1

## Detectable Flexible Palette Knife

The products in this range are all produced from a specially formulated material based on high impact food safe polypropylene. This material has the ability to be detected and rejected by typical metal detection and x-ray machines used in the food processing industry. Available in Blue colour only.

CODE	DESCRIPTION	PACK QTY
600-T086-S401-P01	Detectable Flexible Palette Knife	1



## Detectable Spatula

The products in this range are all produced from a specially formulated material based on high impact food safe polypropylene. This material has the ability to be detected and rejected by typical metal detection and x-ray machines used in the food processing industry. Available in Blue colour only.

Dimensions:

- 160mm long x 6.85mm diameter shaft
- 20mm wide blade x 0.74mm thick

CODE	DESCRIPTION	PACK QTY
518-S261-P01	Food Safe Detectable Spatula	10



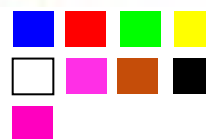
## Detectable Square Scoops

The products in this range are all produced from a specially formulated material based on high impact food safe polypropylene. This material has the ability to be detected and rejected by typical metal detection and x-ray machines used in the food processing industry. Available with Leading Edge technology for a more robust scraping edge (blue only).

CODE	DESCRIPTION	PACK QTY
514-S085-P01-Z03	mini scoop - blue 175g / 6.17oz L 110mm x W 85mm x D 40mm	5
514-S086-P01-Z03	small scoop - blue 500g / 17.63oz L 150mm x W 110mm x D 60mm	5
514-S087-P01-Z03	medium scoop - blue 750g / 25.45oz L 180mm x W 135mm x D 75mm	5
514-S088-P01-Z03	large scoop - blue 1000g / 35.27oz L 225mm x W 150mm x D 85mm	5



Colour



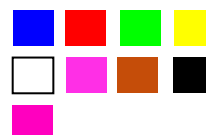
## Detectable Round Scoops

The products in this range are all produced from a specially formulated material based on high impact food safe polypropylene. This material has the ability to be detected and rejected by typical metal detection and x-ray machines used in the food processing industry.

CODE	DESCRIPTION	PACK QTY
514-S240-P01-Z01	Round Bowl Scoop Blue - 1000g / 35.27oz	5
514-S240-P02-Z01	Round Bowl Scoop Black - 1000g / 35.27oz	5
514-S240-P03-Z01	Round Bowl Scoop Red - 1000g / 35.27oz	5
514-S240-P04-Z01	Round Bowl Scoop Green - 1000g / 35.27oz	5
514-S240-P05-Z01	Round Bowl Scoop Yellow - 1000g / 35.27oz	5
514-S240-P06-Z01	Round Bowl Scoop White - 1000g / 35.27oz	5
514-S240-P07-Z01	Round Bowl Scoop Purple - 1000g / 35.27oz	5
514-S240-P08-Z01	Round Bowl Scoop Orange - 1000g / 35.27oz	5
514-S240-P09-Z01	Round Bowl Scoop Pink - 1000g / 35.27oz	5



Colour







This scoop has clearly marked inner graduation marking for easy and accurate measurements allowing scooping of ingredients such as flour and sugar. The handle offers a sturdy, comfortable grip and has a hanging hook for easy storage.

Made in Britain from Detectamet's Detectable high impact durable polypropylene plastic, each scoop has its size stamped on the handle for instant recognition. It also stacks nicely, and the flat bottom means that this scoop will sit flat on counter tops and tables when not in use.

CODE	DESCRIPTION	PACK QTY
515-S089-S048-P01	Small Detectable Flour Scoop (250ml / 8.8oz) L 155mm (6") x W 50mm (2") x D 40mm (1 1/2")	5
515-S090-S050-P01	Medium Detectable Flour Scoop (500ml / 17.6oz) L 195mm (7 1/2") x W 60mm (2 1/3") x D 50mm (2")	5
515-S091-S051-P01	Large Detectable Flour Scoop (1000ml / 35.2oz) L 245mm (9 2/3") x W 75mm (3") x D 60mm (2 1/3")	5

## Detectable Jugs

1 litre (1.75 pints) and 2 litre (3.5 pints) Food Safe Metal Detectable Jugs. Available in three styles to suit various applications.

A graduated Food Safe Detectable jug with 2 style of pouring lip.

- Will hold 1 litre (1.75 pints) or 2 litre (3.5 pints) of liquid.
- Graduation marking are on the inside of the jug.

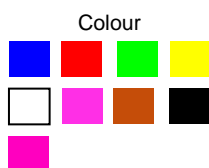
A Flat sided Food Safe Detectable scooping jug.

- Will hold 3.5 pints or 2 litres of liquid.
- Graduation marking are on the inside of the jug.



2 Litre Scooping Jug

Stackable Pouring Jugs



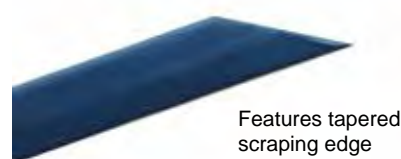
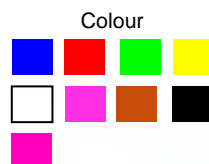
CODE	DESCRIPTION	PACK QTY
535-S012-T100-P01	1 Litre Stackable Pouring Jug	1
535-S018-T100-P01	2 Litre Stackable Pouring Jug	1
535-S018-T101-P01	2 Litre Scooping Jug	1

## Detectable Stirrers and Scrapers

The new detectable plastic stirrer with long handle and scraping edge is designed to be a tough and durable mixing tool that is easy to clean and virtually unbreakable. Available with a solid blade or with holes to suit a variety of mixing and stirring tasks. Produced from specially formulated materials based on high impact food safe polypropylene or with Leading Edge technology for a more robust scraping edge (blue only).

- Width - 40mm (1 1/2")
- Handle length - 155mm (6")
- Blade length - 260mm (10 1/4")
- Total length - 415mm (16 1/3")
- Hole size - 40mm x 20mm (1 1/2" x 3/4")

CODE	DESCRIPTION	PACK QTY
517-A51-P01	Detectable Polypropylene Stirrer - Without Holes	1
517-A50-P01	Detectable Polypropylene Stirrer - With Holes	1
525-S240-T019	Detectable Leading Edge Stirrer - Without Holes	1
525-S240-T018	Detectable Leading Edge Stirrer - With Holes	1



Features tapered scraping edge

## Detectable Prover Pockets

This pocket consists of a metal detectable plastic frame and a polyethelene mesh, allowing metal detectors to reject product containing broken fragments of frame. The open mesh provides excellent air permeability around the dough, and the pockets' design enhances and helps to achieve superb cleaning results.

- Dimensions: 168 x 187 x 85mm.

CODE	DESCRIPTION	PACK QTY
520-P01-A38-S144	Detectable Prover Pockets	1



## Detectable Paddles

Designed for use in a wide range of applications our paddles are effective in both liquid and solid materials, suitable for stirring food ingredients in large pots and vats. Detectamet Fully Moulded Metal Detectable One Piece Paddles are available with holes in the paddle head.

Each paddle is virtually unbreakable, lightweight, easy to clean and store, has excellent wear resistance whilst reducing the risk of damage to floor surfaces and machinery.

CODE	DESCRIPTION	PACK QTY
531-S249-A50	Large Paddle with Holes	1



## Detectable Shovels

The products in this range are all produced from a specially formulated material based on high impact food safe polypropylene. This material has the ability to be detected and rejected by typical metal detection and x-ray machines used in the food processing industry. To bring this range into line with typical colour coding systems, our metal detectable shovels are available in a range of colours incorporating red, blue, green and white. Please note colour options may vary depending on style.

CODE	DIMENSIONS (mm)	DESCRIPTION
530-S248	Blade: 350mm x 380mm x 90mm. Handle Length: 1040mm	Detectable D-Grip Shovel - Short Handle, Large Blade
530-S246	242 x 264 x 478	Detectable Hand Shovel



## Snow Scoops & Pushers

Detectamet's Heavy Duty Snow Shovel is a great tool to have to hand when faced with clearing snow from driveways and paths.

The scoop is manufactured from tough durable plastic with a steel reinforced edge. Measuring 440mm wide by 400mm deep and featuring two handles on the long, robust wooden shaft makes clearing paths and driveways a doddle.

Don't wait until it's white and crisp and even outside, order yours today to ensure you're not stuck in the snow this winter.





Colour



Colour



Colour



Colour



## Detectable Bucket With Lid

With a 12 litre capacity and a sturdy hinged lid it can be used for handling and holding liquids, powders or solid ingredient pieces. The dual detectable polymer that is used to make it has been tested and approved to meet EU and US FDA requirements for contact with food and consumable liquids.

The sturdy plastic handle and lid are firmly and safely attached but they can be removed from the bucket for storage and cleaning. The bucket can be supplied in a range of colour choices so that a stock of differently coloured buckets can each be reserved for specific tasks and thereby reduce the risk of cross contamination. Currently available in Blue & Red.

CODE	DESCRIPTION	PACK QTY
505-P01-S031-A42	12 litre Detectable Bucket with Lid - Blue	1
505-P03-S031-A42	12 litre Detectable Bucket with Lid - Red	1

## Detectable Buckets

The products in this range are all produced from a specially formulated material based on high impact food safe polypropylene. This material has the ability to be detected and rejected by typical metal detection and x-ray machines used in the food processing industry. the bucket is suitable for all cleaning requirements within food factories / recommend to use with Detectamet brushes and can also be used for carrying and storing food.

CODE	DESCRIPTION	PACK QTY
505-P01-S028-A146	9 Litre Bucket - Blue	1
533-S029-A54	10 Litre Economy Bucket with Lid - Blue	1
533-S029-A200	10 Litre Economy Bucket with Lid - Red	1
533-S029-A201	10 Litre Economy Bucket with Lid - Yellow	1
533-S029-A202	10 Litre Economy Bucket with Lid - Green	1

## Detectable Dustpan

Ideal for use in the food industry, the new Detectable Dustpan is sturdily made with an ergonomically shaped handle to control the 300mm (12") wide pan edge. The thicker ridge behind the edge is designed to allow the rubbish to be swept into the tray and the ridge offers a barrier to reduce the risk of dirt falling back onto the floor.

CODE	DESCRIPTION	PACK QTY
511-P01	Detectable Dustpan - Blue	1
511-P02	Detectable Dustpan - Red	1

## Detectable Storage Trays

- Full dispersion of detectable elements throughout the product
- Available in 2 Sizes/4 Colours
- Stackable and Non-Stackable
- Lightweight and easy to handle
- X-Ray visible
- Magnetically Detectable
- Tough and durable
- Easy to clean

CODE	DESCRIPTION	PACK QTY
506-T162-S156-P01	Small Stackable - 280 x 400 x 74 mm	1
506-T162-S157-P01	Large Non-Stackable - 288 x 403 x 155 mm	1



## Detectable Storage Boxes

Now available with lid and secure locking clips - DTM 1227.

A versatile detectable storage box with clip fastening lid. Useful for any number of applications from holding test pieces, first aid dressings, coins and keys etc. The products in this range are all produced from a specially formulated material based on high impact food safe polypropylene. This material has the ability to be detected and rejected by typical metal detection and x-ray machines used in the food processing industry.

CODE	DESCRIPTION	PACK QTY
503-P01-A42	with secure locking clips - L220 x W145 x D45mm	1
500-S091-P01-S153	large blue - L215 x W140 x D40mm	1
500-S091-P03-S153	large red - L215 x W140 x D40mm	1
500-S089-P01-S143	small blue - L164 x W103 x D30mm	1
500-S089-P03-S143	small red - L164 x W103 x D30mm	1



Colour



## Detectable & Non-Detectable Disposable Polythene Tote Bin Covers

The Detectamet disposable plastic euro/tote bin covers easily stretch over standard 300 and 200 litre stainless steel tote bins providing a hygienic tight seal reducing the risk of product contamination.

Product can be easily identified using our colour coding disposable tote bin covers. Available in Blue, Red, Yellow & Green.

- Size: 830mm x 620mm x 38 micron.

CODE	DESCRIPTION	PACK QTY
545-A65-P01-X34	Detectable Polythene Tote Bin Covers - Blue	Roll 250
545-A65-P03-X34	Detectable Polythene Tote Bin Covers - Red	Roll 250
545-A65-P04-X34	Detectable Polythene Tote Bin Covers - Green	Roll 250
545-A65-P05-X34	Detectable Polythene Tote Bin Covers - Yellow	Roll 250
545-A65-P01-X34	Non-Detectable Polythene Tote Bin Covers - Blue	Roll 250
545-A65-P03-X34	Non-Detectable Polythene Tote Bin Covers - Red	Roll 250
545-A65-P04-X34	Non-Detectable Polythene Tote Bin Covers - Green	Roll 250
545-A65-P05-X34	Non-Detectable Polythene Tote Bin Covers - Yellow	Roll 250



Colour



## Stainless Steel Tote Bin Cover Dispenser

Made in Britain from high quality stainless steel, the tote bin cover dispenser from Detectamet is designed to accommodate a roll of 250 tote/euro bin covers.

The dispenser is wall mounted and features a latch secured and hinged lid for quick and easy refilling. A view slot on the side makes it easy to see when the roll is about to run out.

Width - 770mm (30 1/3"), Height - 220mm (8 1/2"), Depth - 220mm (8 1/2").

CODE	DESCRIPTION	PACK QTY
589-T198	Stainless Steel Tote Bin Cover Dispenser	1



**Tel: 01759 304 200**  
**www.detectamet.co.uk**  
**orders@detectamet.com**

## Fully Detectable Resin Set Brushes

Detectamet's Detectable Resin-Set brushware boasts a revolutionary improvement in brush filament retention known as the Double Detainment System.

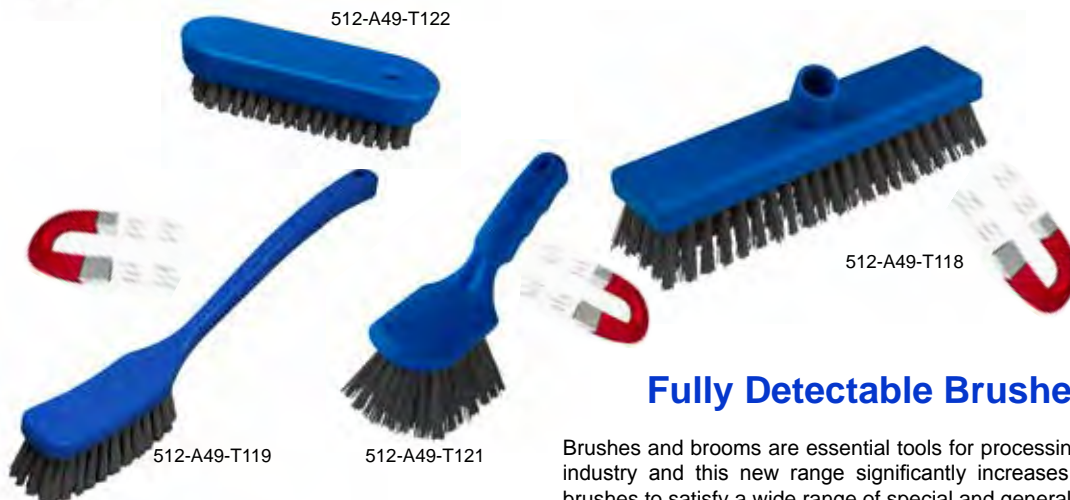
This unique approach uses both food grade stainless steel staples and a detectable anti-microbial resin to secure the tufts to the brush back. This not only prevents the accumulation of dirt and moisture in the tuft holes but also prevents the release of filaments into the food or drink processing environment.

CODE	DESCRIPTION	PACK QTY
512-A49-T121	Detectable Stiff Short Handled Brush	1
512-A49-T119	Detectable Stiff Long Handled Brush	1
512-A49-T120	Detectable Soft Hand Brush	1
512-A49-T122	Detectable Stiff Nail Brush	1
512-A49-T118	Detectable Medium Flat Sweeping Broom	1
512-A44-T123	Stainless Steel Handle with Detectable Hand Grip	1
513-P01	Detectable Wall Bracket System - Blue	1



512-A49-T120

512-A49-T122



512-A49-T119

512-A49-T121



## Fully Detectable Brushes and Brooms

Brushes and brooms are essential tools for processing and cleaning in the food industry and this new range significantly increases the choice of detectable brushes to satisfy a wide range of special and general tasks.

Made from Detectamet's unique plastic polymer these products are completely detectable from the bristles to the top of the handles and are safe for use in a food environment and have been manufactured to be heavy duty and long lasting.

CODE	DESCRIPTION	DIMENSIONS (mm)
510-T111-A45	Nail Brush - Soft Bristles	115x43x46 Bristles 23
510-T112-A45	Dish Brush - Soft Bristles	235x40x50 Bristles 30
510-T112-A46	Dish Brush - Medium Bristles	235x40x50 Bristles 30
510-T113-A45	Small Push Broom - Soft Bristles	340x75x115 Bristles 75
510-T113-A46	Small Push Broom - Medium Bristles	340x75x115 Bristles 75
510-T114-A45	Large Push Broom - Soft Bristles	480x80x130 Bristles 80
510-T114-A46	Large Push Broom - Medium Bristles	480x80x130 Bristles 80
510-T115-A45	Small Floor Brush - Medium Bristles	280x60x70 Bristles 28
510-T115-A46	Large Floor Brush - Medium Bristles	460x65x90 Bristles 40
510-T117-A45	Cylinder Brush - Soft Bristles	350x80 Bristles 27
510-T117-A46	Cylinder Brush - Medium Bristles	350x80 Bristles 27

510-T111-A45  
Detectable Nail Brush

## Detectable Squeegees

The Squeegee is a very efficient tool for clearing moisture from flat surface and can be found wherever water is used for cleaning large surfaces or where condensation occurs and needs to be removed. The food industry uses the extensively and tends to favour the light handling of plastic squeegees. With these benefits come a number of challenges, not least of which is the risk that plastic squeegee mislaid in the food process creates the need for detectability metal and X-ray inspection systems.

The Detectamet Squeegees incorporate the metal and X-ray detectability in the rigid and in the flexible parts without compromising their efficient performance. Whichever inspection system is used when contamination occurs it can be detected and the product rejected before it triggers an expensive product recall.

CODE	DESCRIPTION	PACK QTY
526-P01-A28	Detectable Table Top Squeegee with Handle	1
526-P01-A29	Detectable Floor Squeegee	1
526-P01-A48	Metal and Detectable Handle to fit Floor Squeegee	1
526-P01-A43	Fully Detectable Handle to fit Floor Squeegee	1



## Detectable Stretch Wrap

The new Detectable Stretch Wrap is a safer way of wrapping raw ingredients such as block frozen meats and fish and for bulk wrapping pallets in food warehouse storage and shipping.

To help reduce the risk of food contamination Detectamet's NEW Detectable Stretch Wrap is detectable by metal detector systems. The distinctive blue colour is an extra visual aid to identification if contamination happens.

Detectamet's new stretch wrap tape provides producers of fresh foods, fruits, vegetables and chilled products with a pallet stabilising solution that allows for ventilation and prevents product spoilage. Unlike traditional Stretch Wrap Film, Stretch Wrap Tape does not cause fresh produce to 'sweat' beneath the film.

CODE	DESCRIPTION	PACK QTY
546-S221-P01	Detectable Stretch Wrap - 400mm x 200m x 30micron	6 Rolls
546-S228-P01	Detectable Stretch Wrap - 500mm x 800m x 30micron	2 Rolls
547-S147	Detectable Stretch Wrap Tape - 50mm x 65m x 25micron	1 Roll



## Shadow Boards

Shadow boards are widely used across most food factories for correctly storing a wide variety of equipment. A shadowboard is a significant tool for operational efficiency and provides the opportunity to have equipment where it is needed with rapid visual assessment, coupled with traceability controls.

Detectamet shadowboards are manufactured using 10mm PVC with integral stainless steel fittings and can accommodate a wide range of Detectamet products to your specific designs with regard to colour, text, logo and layout.

Please contact our Sales Office on Tel +44 (0) 1759 304200 or email [sales@detectamet.com](mailto:sales@detectamet.com) for more information.







Colour



## Detectable Mallets

Detectable Plastic Hammer/Mallet incorporating detectable plastic head. The handle is standard plastic. The Hammer/Mallet offers high impact, durability and high abrasive resistance.

- Made in the UK to high quality standards.
- Resistant to corrosion and most chemicals.
- Will not fracture, splinter or delaminate.
- Detectamet Detectable Plastic Hammer/ Mallet head is fitted to plastic handle to meet with Food Hygiene Regulations.

CODE	DESCRIPTION	PACK QTY
810-S056-P01	25mm Diameter Head - Blue	1
810-S062-P01	50mm Diameter Head - Blue	1
810-S066-P01	70mm Diameter Head - Blue	1



## Detectable Bag Gripper / Sealer

Reduce the risk of cross contamination and preserve hygienic standards by securing bag contents with this unique Food Safe Detectable Bag Gripper / Sealer.

The locking ability of the Detectable Bag / Sack Gripper will help to minimise the risk of contamination, leakage and accidents within your plant / processing area.

CODE	DESCRIPTION	PACK QTY
805-S231-T098	Detectable Bag Gripper / Sealer	5

## Detectable Plastic Bag Clip / Closure

The NEW Detectamet Detectable Plastic Clip / Closure is fully Metal Detectable & X-Ray Visible. Durable at very low temperatures of -50°C / -58°F.

- Sealing length: 320mm - 12 1/2 inch
- Total length: 362mm - 14 5/16 inch
- Weight: 94g.

CODE	DESCRIPTION	PACK QTY
804-S236	Detectable Bag Clip	1



## Detectable Rubber Bands

High Quality Detectable Rubber Bands designed & developed specifically for use in the food industry. As well as being Metal Detectable & Magnetic, the NEW rubber bands are manufactured in a highly visible blue colour to aid in detection. Sold in packs of 50 (Bulk quantities also available).

More sizes coming soon and bespoke sizes and colours available on request. Please contact sales@detectamet.com for more information.

CODE	DESCRIPTION	PACK QTY
821-S161-X09	80mm x 6mm x 1mm	50
821-S160-X09	70mm x 6mm x 1mm	50
821-S158-X09	60mm x 6mm x 1mm	50



## Detectable Sampling Cups & Beakers

The products in this range are all produced from a specially formulated material based on high impact food safe polypropylene. This material has the ability to be detected and rejected by typical metal detection and x-ray machines used in the food processing industry. Available in blue only.

- Cup Dimensions: 80mm (3 1/2") high x 82mm (3 1/8") diameter, Capacity: 315ml (10 2/3 fl oz)
- Beaker Dimensions: 100mm (4") high x 77mm (3") diameter, Capacity 295ml (10 fl oz)

CODE	DESCRIPTION	PACK QTY
502-T208	Detectable Sampling Cup	1
502-T200	Detectable Sampling Beaker	1

## Detectable Sampling Knives, Forks & Spoons

In-process sampling can now be carried out with less risk of foreign material contamination. The new Detectamet sampling tools are ideal for taking, prepping and handling samples. The knives, forks and spoons are sold separately in packs of ten and have been specifically designed to reinforce the claim of using "all due diligence".

These new food safe sampling tools form a set of useful equipment to take samples from food handling and process areas. The sturdy knife, fork and spoon are able to extract and take samples from most materials and the spoon will hold a 15ml sample.

CODE	DESCRIPTION	PACK QTY
532-P01	Detectable Sampling Knife	10
529-P01	Detectable Sampling Fork	10
527-P01	Detectable Sampling Spoon (15ml)	10

## Detectable Storage Containers

Manufactured from Detectamet's Detectable Plastic and available in blue.

Detectable Rectangular Container

- Dimensions: 130mm (5") x 190mm (7 1/2") x 80mm (3")
- Capacity: 1700ml (57.5 fl oz)

Detectable Square Container

- Dimensions: 115mm (4 1/2") x 115mm (4 1/2") x 75mm (3")
- Capacity: 800ml (27 fl oz)

CODE	DESCRIPTION	PACK QTY
507-S145-P01	Detectable Rectangular Container	1
508-S140-P01	Detectable Square Container	1

## Detectable Containers with Airtight Lid

Manufactured from Detectamet's Detectable Plastic and available in blue.

- Round Bowl - Depth 90mm (3 1/2"), Base Diameter 235mm (9 1/4"), Lid Diameter 305mm (12"), Capacity 4000ml (135.25 fl oz)
- Square - Depth 75mm (3"), Base Dimensions 230mm x 230mm (9" x 9"), Lid Dimensions 265mm x 265mm (10 1/2" x 10 1/2"), Capacity 2500ml (118.5 fl oz)

CODE	DESCRIPTION	PACK QTY
516-Z01-P01-A40	Detectable Round Bowl with Detectable Airtight Lid	1
516-Z02-P01-A40	Detectable Square Container with Detectable Airtight Lid	1

## Fully Detectable Storage Tub

This storage container can be used not only for Disinfectant/Probe wipes but for several other storage opportunities such as; Stationary, Cable ties, Engineering equipment and other tools that just need a presentable container to protect against environmental hazards.

CODE	DESCRIPTION	PACK QTY
433-S089-P01	Small Fully Detectable Storage Tub	1
433-S091-P01	Large Fully Detectable Storage Tub	1

Sampling Beaker

Sampling Cup



**NEW  
PRODUCT**



Colour



**Tel: 01759 304 200**  
**www.detectamet.co.uk**  
**orders@detectamet.com**



Blue Food Safe Metal Detectable Plasters and dressings.

We offer a wide range of Detectable plasters and dressings to suit every customers needs and budget. Electro-Magnetic Detection and visual blue plasters/dressings are ideally suited for the food industry where the necessary detection equipment is operational.

Key benefits include :-

- Hypoallergenic adhesive.
- Blue in colour to assist detection
- Sterile and individually wrapped
- Allows skin to breathe
- Micro porous structure
- Complies with Food & Hygiene regulations SI1990 & No1431
- Comprehensive Range
- Conformable
- Washproof

## DETECTABLE PLASTERS

33	Metal Detectable Plasters
33	X-Ray Detectable Plasters
33	Detectable Storage Box



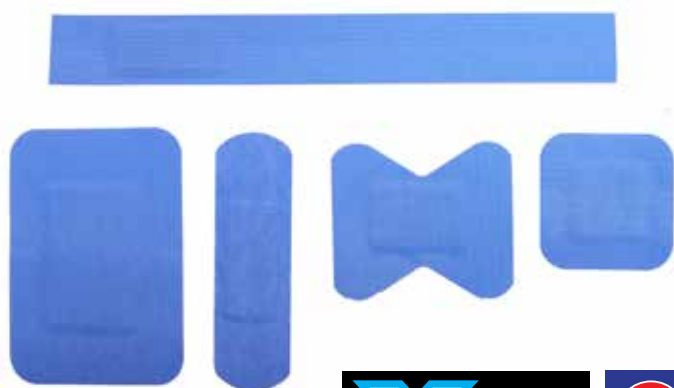
# Metal Detectable Plasters

Electromagnetic Detection and visual blue plasters/dressings are ideally suited for the food industry where the necessary detection equipment is operational. The metal strip positioned behind the lint pad is the key component for detection.

Please note if packaging in your factory contains aluminium we recommend the use of X-Ray visible plasters if both detection systems are installed.



## X-Ray Visible Plasters



Electromagnetic Detection coupled with X-Ray detection! Our visual blue plasters/dressings are ideally suited for the food industry where the necessary detection equipment is operational. Two types metal strip which are positioned behind the lint pad is the key component for detection.

### Detectable Storage Boxes

A versatile detectable storage box with clip fastening lid. Useful for any number of applications from holding test pieces, first aid dressings, coins and keys etc. The products in this range are all produced from a specially formulated material based on high impact food safe polypropylene. This material has the ability to be detected and rejected by typical metal detection and x-ray machines used in the food processing industry.

CODE	DESCRIPTION	PACK QTY
503-P01-A42	with secure locking clips - L220 x W145 x D45mm	1
500-S091-P01-S153	large blue - L215 x W140 x D40mm	1
500-S091-P03-S153	large red - L215 x W140 x D40mm	1
500-S089-P01-S143	small blue - L164 x W103 x D30mm	1
500-S089-P03-S143	small red - L164 x W103 x D30mm	1



**Tel: 01759 304 200**  
**www.detectamet.co.uk**  
**orders@detectamet.com**



The SK Series of Safety Knives and Cutters can offer you a wide range of knives to suit most applications.

Lost or unlocated cutters in food operations can now be readily detected!

All cutter bodies are made from metal detectable material, and are supplied as standard in blue. Other colours are available on certain styles.

GS Tested for Safety technology

Stainless Food Contact Approved blades

The basic criteria for a knife or cutter to be included in the Detectamet range of metal detectable safety cutters will meet with the following:

A genuine safety knife with a safety index of 4 or less (1 = bladeless, 2 = enclosed blade, 3 = fully automatic blade retraction, 4 = semi automatic blade retraction, 5 = manual blade retraction)

A knife which has a low risk of breaking into fragments with minimum parts

We can also supply the range of safety knives and cutters in standard non-detectable materials.

## SAFETY KNIVES

36 Detectable Safety Knives

41 Security Cages

# Detectable Auto-Retract Safety Knife

- ▶ Automatic blade retraction for safety
- ▶ The non replaceable blade is in a sealed handle for extra safety
- ▶ Simple to use and lightweight
- ▶ Fully metal detectable
- ▶ Approved for safe contact with food.



**Cuts  
packaging  
and wraps**



*Suitable for the left or right hand*



# Food Safe Metal Detectable Bag Cutter



- ▶ Suitable for cutting bags, bubble wrap, strapping, tape and paper.
- ▶ Made from metal detectable plastic with a stainless steel blade.

▶ The patented opposed slopes at the back of the blade reduces friction which enables a smooth and more effective cut.



*Suitable for the left or right hand*







## Detectable Plastic Sheet Cutter

This plastic sheet cutter offers 2 advantages. A highly simplified blade change routine plus the integrated metal slitter (removable) to cut cardboard box adhesive tapes. For trouble free work with thick plastic sheeting, leather, plastic box strapping.

- Fully Metal Detectable
- Plastic Sheet Cutter (also leather, plastic box strapping)
- Replaceable Blades
- Integrated metal slitter tool to open the blade cover
- The SK100 has a special tool to open the blade cover "preventing unauthorised access to the blade"
- Tested for Safety.



CODE	DESCRIPTION	PACK QTY
615-K100-T191-P01	SK100 Knife With Security Key	1
615-K101-T184-P01	SK101 Knife	1
618-P44-K003-T071	Stainless Steel Replacement Blade - Suits SK100	10
618-P44-K003-T072	Stainless Steel Replacement Blade - Suits SK101	10
618-P32-K004-T072	Stainless Steel Replacement Tape Scratcher Blade - Suits SK101	10



## Detectable Retractable Blade Safety Knife

The spring loaded blade retract system is designed to respond to any uncontrolled move if and when the thumb - push slider is NOT in forward position- let go of the slider when making the cut! Easy blade change and no extra tools required - just slide the blade mount insert back.

- Fully Metal Detectable
- Replaceable Blades
- Aluminium Body
- Spring loaded blade retract
- Tested for Safety



CODE	DESCRIPTION	PACK QTY
615-K102-T038-P30	SK102 Knife	1
618-P32-K005-T073	Stainless Steel Replacement Blade	10



## Detectable Disposable Retractable Blade Safety Knife

Designed to cut packaging and wraps, this is a disposable knife and must be replaced when showing any signs of wear and tear.

The non replaceable blade is in a sealed handle for extra safety ( no risk of loss from internal parts). This knife is a very simple and popular lightweight knife.

This knife can be safely pocketed and can be used by both right and left handers.

- Fully metal detectable
- Automatic blade retract for safety
- Tested for safety



CODE	DESCRIPTION	PACK QTY
615-K104-T184-P01	SK104 Knife	5

## Detectable Packaging Cutter

A disposable metal detectable knife. Made for light use. Reduce the risk of accidents through blade changing by using this fixed blade Safety Knife.

Eliminate danger from loose blades accidentally falling into merchandise.

- Fully metal detectable body
- Stainless steel blade
- Pointed nose for piercing
- Hygienic and disposable Moulded-in, Carbon Steel Blades
- Shielded Blades
- No Removable Parts
- Impact resistant Metal Detectable polypropylene casing for durability.

CODE	DESCRIPTION	PACK QTY
615-K106-T030-P01	SK106 Knife Blue	5
615-K106-T030-P03	SK106 Knife Red	5
615-K106-T030-P04	SK106 Knife Green	5
615-K106-T030-P05	SK106 Knife Yellow	5



Plastic Bags



Stretch Wrap



String

Colour



## Detectable Heavy Duty Packaging Cutter

A disposable metal detectable knife. Made for heavy duty use. Reduce the risk of accidents through blade changing by using this fixed blade Safety Knife.

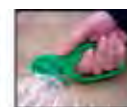
Eliminate danger from loose blades accidentally falling into merchandise.

- Fully metal detectable body
- Stainless steel blade
- Pointed nose for piercing
- Hygienic and disposable Moulded-in, Carbon Steel Blades
- Shielded Blades
- No Removable Parts
- Impact resistant Metal Detectable polypropylene casing for durability.

CODE	DESCRIPTION	PACK QTY
615-K107-T031-P01	SK107 Heavy Duty Knife Blue	5
615-K107-T031-P03	SK107 Heavy Duty Knife Red	5
615-K107-T031-P04	SK107 Heavy Duty Knife Green	5
615-K107-T031-P05	SK107 Heavy Duty Knife Yellow	5



Strapping



Bubble/Stretch Wrap



Cardboard



Bags & Sacks

Colour



## Detectable Multipurpose Safety Knife

A disposable, metal detectable knife for light use. Fixed blade Safety Knife.

Eliminate danger from loose blades accidentally falling into merchandise.

- Completely sealed against bacteria
- Hygienic, moulded in shielded stainless steel blades
- Pointed nose for piercing
- No removable parts
- Moulded-in, Carbon Steel Blades
- Shielded Blades
- Impact resistant metal detectable polypropylene casing for durability

CODE	DESCRIPTION	PACK QTY
615-K108-T192-P01	SK108 Without Hook - Blue	5
615-K108-T193-P01	SK108 With Tape Cutter - Blue	5
615-K108-T194-P01	SK108 With Hook - Blue	5



Plastic Netting



Plastic Bags



Vacuum Pack



Tape



String & Netting

Colour



Hook Blade

Available With:  
Tape Cutter

None

Tel: 01759 304 200  
[www.detectamet.co.uk](http://www.detectamet.co.uk)  
[orders@detectamet.com](mailto:orders@detectamet.com)



Strapping



Vacuum Packs



Tape &amp; Card

Also suitable for cutting: - Stretch Wrap, Bubble Wrap, String, Rope etc.

## Detectable Safety Knife with Hook Blade

The SK109 has a unique patented valley, which guides the material to be cut directly along the surgical steel blade. As the valley deepens, the pressure is increased onto the blade, the cutting action is more effective, thus taking the strain off the operator and increasing overall efficiency.

The patented valley is totally unique in the field of Safety Knives.

- Fully metal detectable.
- Hook and Blade punctures & box prevents damage to goods inside.
- Unique Vari Guard. Automatic spring loaded finger guards.
- No screws Fast blade change with internal storage for new & use.

CODE	DESCRIPTION	PACK QTY
615-K109-T195-P01	SK109 With Hook Blue	5
615-K109-T192-P01	SK109 Without Hook Blue	5
618-P32-K001-T075	Stainless Steel Replacement Hook Blade	10
618-P32-K002-T075	Stainless Steel Replacement Straight Blade	10

## Detectable Box Cutter

A revolutionary and unique break through in the field of Safety Knives. It is directly targeted at the most common uses for knives - Cardboard Boxes.

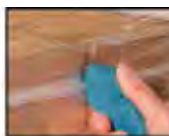
- Unique -Vari-Guard: Automatic Spring-Loaded Finger Guards, protect & retract when cutting
- Thumb grip for superior control
- Internal storage for new & used blades
- Blade will not break out of casing under stress
- Hook Blade punctures the box & prevents damage to goods inside.
- Straight Blade cuts conventionally with a 45degree angle.
- Only blunt edges of Hook Blade exposed. Protects fingers from sharp blade.
- Grip when wet
- No Screws - Fast blade change



CARD



STRAPPING



STRETCH WRAP

CODE	DESCRIPTION	PACK QTY
615-K111-T033-P01	SK111 Boxcutter	1
618-P40-K001-T076	Carbon Replacement Hook Blade	10
618-P32-K002-T076	Stainless Steel Replacement Straight Blade	10

## Detectable Box Cutter

A revolutionary and unique break through in the field of Safety Knives. It is directly targeted at the most common uses for knives - Cardboard Boxes.

- Unique -Vari-Guard: Automatic Spring-Loaded Finger Guards, protect & retract when cutting
- Thumb grip for superior control
- Internal storage for new & used blades
- Blade will not break out of casing under stress
- Hook Blade punctures the box & prevents damage to goods inside.
- Straight Blade cuts conventionally with a 45 degree angle.
- The SK112 has a special tool to open the blade cover preventing unauthorised access to the blade



CARD



STRAPPING



STRETCH WRAP

CODE	DESCRIPTION	PACK QTY
615-K112-T034-P27	SK112 - Blue, with security key	1
618-P32-K002-T077	Stainless Steel Replacement Straight Blade	10



## Detectable Bag Cutter

The "Bag Cutter" Safety Knife is specifically designed to cut multi-layer paper or plastic bags and sacks.

Moulded In Metal Detectable Plastic and with a Stainless Steel Blade

The patented opposed slopes at the back of the blade reduces friction resistance which enables a smooth and more effective cut.

CODE	DESCRIPTION	PACK QTY
615-K116-T035-P01	SK116 swan bag cutter - Blue	5



## Detectable Safety Knife with Retractable Hook Blade

The SK117 is the latest addition to our Safety Knife range.

Moulded in Metal Detectable Plastic with Stainless Steel Blades.

- Patented 'opposed exits' at the back of the blade
- Spring loaded auto retractable hook blade
- Disposable
- Suitable for cutting strapping, paper, stretch and bubble wrap, tape, boxes and a variety of other packaging materials.

CODE	DESCRIPTION	PACK QTY
615-K117-T196-P01	SK117 c/w spring loaded hook - blue	5



## Detectable Heavy Duty Safety Knife

Larger more robust heavy duty version of SK 109.

- Replaceable blades
- 9mm mouth opening
- Tamper proof option
- Optional retracting hook
- Fast blade change and easy to clean
- Suitable for cable ties, rope, string and netting

CODE	DESCRIPTION	PACK QTY
615-K118-T197-P01	SK 118 Heavy duty cutter - retracting hook	1
615-K118-T192-P01	SK 118 Heavy duty cutter - without hook	1



**Tel: 01759 304 200**  
**www.detectamet.co.uk**  
**orders@detectamet.com**

## Detectable Safety Knife with Retractable Blade



- The blade locks in the 'out' position whilst a controlled cut is being made. If the knife is jerked, shaken or dropped, the blade will retract.
- Lock control for safe storage.
- Moulded in tough glass-filled nylon.
- Easy blade change.
- Detectable plastic blade carrier
- Easy cleaning procedure.

CODE	DESCRIPTION	PACK QTY
615R-K119-T037-A117	SK 119 - Detectable Plastic Blade Carrier	1
615R-K120-T037-A118	SK 120 - Heavy Duty Aluminium Blade Carrier	1



## Detectable Heavy Duty Pocket Knife



Lambsfoot Blade

Sheepfoot Blade



General Purpose Blade

Pruner Blade

The Detectamet Heavy Duty Locking Blade Pocket Knife has been designed to assist people in the Food and related industries to help them complete their work to the highest standard.

This heavy duty action knife has a strong and durable handle made from metal detectable plastic and in blue colour for high visibility.

CODE	DESCRIPTION	PACK QTY
605-T042-P01	Detectable Heavy Duty Pocket Knife With Lambsfoot Blade	1
605-T043-P01	Detectable Heavy Duty Pocket Knife With Sheepfoot Blade	1
605-T044-P01	Detectable Heavy Duty Pocket Knife With Clip Point General Purpose Blade	1
605-T045-P01	Detectable Heavy Duty Pocket Knife With Pruner Blade	1

## Stainless Steel Locking Knives



All Purpose Blade



Pruner Blade



Drop Point Blade

The blade locks open for safety in use and is released by depressing the release spring in the handle. Ideal for farmers, construction workers and general purpose industrial use.

The handle has a large marking area which can be personalised.

The knife can be fitted with a shackle or a shackle and lanyard at extra cost.

Blade types available:

- 70mm all purpose
- 65mm curved pruner
- 60mm general purpose drop point

CODE	DESCRIPTION	PACK QTY
606-Q04-T220	Stainless Steel Locking Knife - 70mm All Purpose Blade	1
606-Q05-T223	Stainless Steel Locking Knife - 65mm Curved Pruner Blade	1
606-Q06-T226	Stainless Steel Locking Knife - 60mm Drop Point Blade	1

## Security Cages

Security is often of paramount importance for sensitive equipment, particularly knives and we offer Stainless Steel cages with mesh doors utilising combination (or key) padlocks for safe controls, which still provide adequate visibility.

Can be fitted with magnetic knife bars and stainless steel hanging posts to house a variety of knives and scrapers in a highly visual yet secure manner.

Please contact our Sales Office on Tel +44 (0) 1759 304200 or email [sales@detectamet.com](mailto:sales@detectamet.com) for more information.

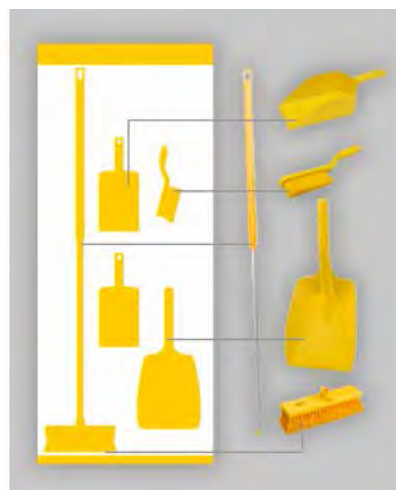


## Shadow Boards

Shadow boards are widely used across most food factories for correctly storing a wide variety of equipment. A shadowboard is a significant tool for operational efficiency and provides the opportunity to have equipment where it is needed with rapid visual assessment, coupled with traceability controls.

Detectamet shadowboards are manufactured using 10mm PVC with integral stainless steel fittings and can accommodate a wide range of Detectamet products to your specific designs with regard to colour, text, logo and layout.

Please contact our Sales Office on Tel +44 (0) 1759 304200 or email [sales@detectamet.com](mailto:sales@detectamet.com) for more information.







Detectamet can offer you an extensive range of Professional Knives and Accessories for use in the Catering, Food Processing and general industries worldwide. Our blades are guaranteed against defective materials and workmanship and are designed to offer long and reliable service to all professional users.

## Hygiene / Handles & Blades

Our blades are made in the UK from fully hardened and tempered stainless steel and are easy to clean. Knives only require to be steeled occasionally in the normal way to retain a perfect cutting edge.

Our detectable handles are insert moulded from polypropylene co-polymer to withstand rigorous sterilising and dishwasher use and do not present the potential health hazards that are frequently associated with other knives.

Tested to assess compliance with the current EC food legislation (EN) 1935/2004 on materials and articles intended to come into contact with food and repealing directives. All products come with a certificate of conformity. Migration test reports available on request.

**The Regular Handle** - standard, polypropylene metal detectable handle, originally designed for holding the knife safely and comfortably for long periods.



**The Ergo handle** - polypropylene metal detectable handle, developed for the professional user who uses knives all day, our research and development team worked with various food processing companies to develop this innovative handle, the resulting design provides the following benefits-

- Double tapered design, ergonomically designed to reduce stress to hand and wrist
- Contoured thumb platform and rounded blade back for added comfort



We recommend that a coding system is used for all Professional Knives in the range to prevent cross-contamination, tainting of food and to separate production lines in the food industry.

HANDLE COLOUR CODING	
RED	Raw Meat
BLUE	Raw Fish
YELLOW	Cooked Meat
GREEN	Salad
ORANGE	Fruit
BLACK	Vegetables
WHITE	Dairy Products
PURPLE	Free Choice

## Cook's Knife

Multi-purpose knife designed to perform well at many differing kitchen tasks.



## Curved Boning Knife

The boning knife is an ideal kitchen knife for removing meat from bones. Use a curved boning knife for a better working angle when cutting close to and around the bone.



## Palette Knife

A palette knife is designed for spreading a substance onto a flat surface, such as icing on a cake. It is also an ideal tool for applying spreads onto sandwiches in mass quantities.



## Vegetable Knife

Designed specifically to slice, chop and trim fresh produce.



## Butcher's Knife

Designed and used primarily for the butchering and/or dressing of animal carcasses. The heftier blade works well for splitting, stripping and cutting meat.



Visit our website for the full range of available professional knives.  
[www.detectamet.co.uk](http://www.detectamet.co.uk)

**VISIT OUR  
WEBSITE**



**Tel: 01759 304 200**  
**[www.detectamet.co.uk](http://www.detectamet.co.uk)**  
**[orders@detectamet.com](mailto:orders@detectamet.com)**



## Detectable Palette Knives

Palette Knives which are manufactured in the traditional way come with fully detectable handles.

The test when choosing a Palette Knife is to press the blade onto a firm surface. It should bend from the middle of the blade, not near the handle. Keep pushing the blade so it is at 90 degrees to the handle. A Palette knife in the Detectamet range has the flexibility to allow it to return to a dead straight "rest" position time and time again.



## Detectable Sharpening Steel

All our sharpening steels are supplied with detectable handles and magnetised hard chromed blades. Oval blades available on request.



## Detectable Cutting / Chopping Board

Made from Detectamet "Detectathene" a metal detectable ultra high molecular weight polythene is suitable for use as a chopping/cutting board.

CODE	DESCRIPTION	PACK QTY
826-S375-P01	Detectathene - blue (detectable) Cutting / Chopping Boards - Size 610x457x10mm	1
826-S376-P01	Detectathene - blue (detectable) Cutting / Chopping Boards - Size 610x457x50mm	1



## Security Cages

Security is often of paramount importance for sensitive equipment, particularly knives and we offer Stainless Steel cages with mesh doors utilising combination (or key) padlocks for safe controls, which still provide adequate visibility.

Can be fitted with magnetic knife bars and stainless steel hanging posts to house a variety of knives and scrapers in a highly visual yet secure manner.

Please contact our Sales Office on Tel +44 (0) 1759 304200 or email [sales@detectamet.com](mailto:sales@detectamet.com) for more information.





Detectamet products, equipment and materials are suitable for packaging and food contact. Our products meet the requirements of the Acts, regulations and orders applicable in Europe and the United Kingdom relating to goods supplied including, but not necessarily limited to, the following:

- **1935/2004 - Materials and Articles Intended to Come into Contact with Food**, and all subsequent amendments (and their transposition into National Law).
- **2023/2006 - Good Manufacturing Practice for Materials and Articles Intended to Contact with Food**, and all subsequent amendments (and their transposition into National Law).

Overall Migration Limits are available for the majority of our products.

#### DETECTABLE HYGIENE WORKWEAR

47	Detectanet™ Detectable Mobcaps & Balaclava Hoods
47	Detectanet™ Detectable Hairnets & Hairtie
48	Multi Purpose Stainless Steel PPE Dispenser
48	Detectanet™ Detectable Beard Snoods
49	Detectable Disposable Polythene Aprons
49	Detectable Mechanical Nitrile Work Glove
50	Detectable Disposable Food Handling Vinyl Gloves
50	Detectable Deteca-Glove Guard
50	Detectable Glove Dispensers
51	Detectable "Clean Ear" Hygienic Ear Plug System
51	Detectable Expandaband
51	Detectable Earplugs
52	Fully Detectable Sleeve Covers
52	Fully Detectable Shoe Covers
52	Shoe Cover Dispensers
53	Detectable Face Masks
53	Disinfectant & Probe Wipes including Dispensers

**Tel: 01759 304 200**  
**[www.detectamet.co.uk](http://www.detectamet.co.uk)**  
**[orders@detectamet.com](mailto:orders@detectamet.com)**

# Detectable Disposable Powder Free Vinyl Gloves

The patent protected range of gloves from Detectamet includes a detectable vinyl product designed for use in a general food handling situation and the material has been approved for food contact according to EU and USA regulations.



**Available**  
in 4 sizes  
S, M, L & XL

## Detectable Disposable Filtering Facemasks

### Key Features

1. High Respiratory Protection
2. Metal Detectable
3. Staple Free
4. Adjustable
5. Highly Visible
6. Comfortable

#### 1. Metal Detectable

All the plastic fittings are made from Detectamet's metal detectable plastic (Conforms to EN 1935/2004).

- 1a. Detectable Adjusters
- 1b. Detectable Valve Mount
- 1c. Detectable Adjustable Noseband

#### 2. Staple Free

No staples minimises risk of contamination and facial irritation.

#### 3. High Respiratory Protection

Meets the FFP3 standard. The Detectable valve filters out at least 99% of airborne particles.

#### 4. Adjustable

Fully adjustable straps and nose clip to ensure long term user comfort and protection.

#### 5. Highly Visible

The fabric of this mask is made from a special high visibility blue material.



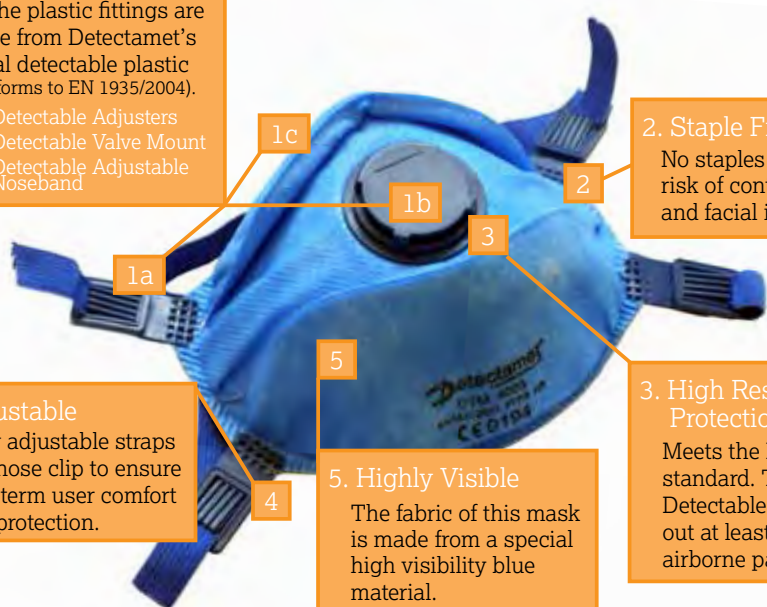
Meets the European standard:  
EN149:2001+A1:2009



Meets the Australia /New Zealand standard:  
AS/NZ1716:2012 P2



Meets the USA standard:  
NIOSH N99



## Detectanet™ Detectable Mobcaps

We offer 2 styles of Mobcap. Our Standard Mobcap and our Premium Mobcap. Standard Mobcap - being detectable at 34645 and a light shade of blue, offering good protection and to meet budget requirements without compromising on quality.

Premium Mobcap - being more detectable at 40505 and extremely robust, ideal for those factories that are producing food products which make detection difficult due to the line settings and the packaging requirements, this Mobcap is ideal for the customer who wants a thicker hair covering for employees with long hair etc.

CODE	DESCRIPTION	PACK QTY
446-T009-P01-X32	Standard Mob Caps - Colours available blue, red, white	1000
446-T010-P01-X32	Premium Mob Caps - Colours available blue, red, white, green, yellow	1000

## Detectanet™ Detectable Hairnets

Detectanet's NEW range of Detectable Hairnets incorporate a unique 'Fold and Hold' technology which helps to contain hair, especially important for short hair. The patent pending technology allows the hairnet to expand and contract to hold both short and long hair and is excellent for encasing long hair.

CODE	DESCRIPTION	PACK QTY
440-T001-P01-X11	Fine Mesh - available in blue	100
440-T021-P01-X11	Extra Fine Mesh - available in blue	100
440-T022-P01-X06	Super Fine Mesh - available in blue	25
440-T023-P01-X11	Close mesh 5mm - available in blue, red, green, brown & white	100
440-T024-P01-X11	Course mesh 10mm - available in blue, brown & white	100
440-T025-P01-X11	Extra close mesh 3mm - available in blue & white	100

## Detectanet™ Detectable Balaclava Hoods

Our lightweight breathable balaclava hoods are made in a lightweight polyester non woven fabric.

Detectanet's Detectable Balaclava Hood is extremely robust, ideal for those factories that are producing food products and also for the customer who wants a thicker hair covering for employees with long hair.

CODE	DESCRIPTION	PACK QTY
441-T009-P01	Detectable Balaclava Hoods - Blue	100
441-T009-P06	Detectable Balaclava Hoods - White	100
441-T009-P03	Detectable Balaclava Hoods - Red	100

## Detectanet™ Detectable Bun Nets

Detectanet™ Bun Nets enclose all hair and provide an additional layer to help prevent hairs protruding through outer coverings due to the abrasion when fidgeting with headwear.

Ideal for use with Detectanet™ HairTies to secure long hair effectively under the Bun Net and ensure maximum detectability.

CODE	DESCRIPTION	PACK QTY
447-P01-X09	Detectable Bun Nets	50



Colour



Colour



Colour





## Detectamet™ Detectable Hair Tie

Detectamet's NEW Detectable Hair-Ties are manufactured from blue elastic polyester yarn and stainless steel yarn for maximum detectability.



CODE	DESCRIPTION	PACK QTY
442-X30	Fully Detectable Hair Tie	5

## Detectamet™ Detectable Non-Woven & Mesh Beard Snoods

Detectamet offers a wide range of metal detectable beard snoods. 2 Styles incorporating both metal clip system and aluminium foil strip system.

Woven Beard Snoods – ever popular giving far greater airflow. Available in 2 mesh sizes with metal clip to give greater detectability.

Non Woven Beard snoods - complete cover for larger and longer beards. Detectable by aluminium foil strip.



Colour



CODE	DESCRIPTION	PACK QTY
445-T013-P01-X33	Non woven - Blue	500
445-T013-P03-X33	Non woven - Red	500
445-T013-P06-X33	Non woven - White	500
445-T012-P01-X06	Close mesh - Blue	25
445-T011-P01-X06	Extra close mesh - Blue	25
445-T002-P01-X06	Fine Mesh - Blue	25

## Multi Purpose Stainless Steel PPE Dispenser

Multi-purpose stainless steel dispenser for the distribution of PPE items that can be free standing on a stainless steel stand. The stainless steel construction permits easy and efficient cleaning, and a vertical slot in the front face lets supervisors see when the dispenser needs refilling. Suitable for a wide range of PPE equipment including:

- Mobcaps (Approximate capacity 200)
- Hair Nets (700)
- Beard Snoods (600)
- Ear Plugs (600 pairs)
- Overshoes (600)
- Oversleeves (200).



CODE	DESCRIPTION	PACK QTY
453-P45-A26	Stainless Steel Dispenser - with Stand	1
453-P45-A25	Stainless Steel Dispenser - Wall Mountable	1
453-P45-A27	Stainless Steel Dispenser - with Mobile Stand	1

## Detectable Disposable Polythene Aprons

Supplied on a roll.

- Size 70cm x 1250cm
- 100 Aprons per roll
- 10 rolls per case
- Available in blue or red colour.

CODE	DESCRIPTION	PACK QTY
449-P01-S219-X16	Detectable Disposable Polythene Aprons on a roll	100



Colour



## Detectable Food Safe Seamless Cuff Nitrile Gloves

An ideal glove which can be used in both indoor and outdoor areas. It provides mechanical power while performing work. Oil and water easily glides down the surface of the glove and also its textured surface enables wearers to clutch the smooth surfaces firmly. Cotton lined, it can be manufactured in lengths requested up to the wrist, elbow or shoulder. Durable against oil, grease and various chemicals. Suitable for work that requires protection up to the elbow or all of the arm, dye industry and sanding machine. Conforms to standards EN 1935/2004 & EN 388 (2111). Sizes available - 8,9 & 10. Lengths available - 270mm, 400mm & 600mm.

CODE	DESCRIPTION	PACK QTY
455-A100-T017	Reinforced and seamless cuff, 270mm length	1 Pair
455-A159-T017	Reinforced and seamless cuff, 400mm length	1 Pair
455-A160-T017	Reinforced and seamless cuff, 600mm length	1 Pair



## Detectable Food Safe Woven Cuff Nitrile Gloves

A heat proof detectable nitrile coated glove providing flexibility. Mechanical resistant and oil proof. Resistant to friction, tearing and cutting. Has superior piece clutching aspect both wet and dry pieces. Suitable for general protection, assembly, transportation, agricultural work and others. 100% cotton interlock lining.

Conforms to standards EN 1935/2004 & EN 388 (3121).  
Sizes available - 7, 8, 9, 10 & 11. Length - 160mm.

CODE	DESCRIPTION	PACK QTY
455-A101-T18	Woven cuffed, upper hand part coated	1 Pair
455-A101-T17	Woven cuffed, upper hand fully coated	1 Pair





**NEW  
PRODUCT**



## Detectable Food Handling Vinyl Glove

In a world where hygiene and safety to avoid food contamination from bacterias such as E-coli are top priorities, food manufacturers can provide their employees with a glove that can also offer protection against foreign body contamination. The Detecta glove is a Powder Free Vinyl Food Service Glove and meet FFDC(21CFR) requirements for food contact. Available in sizes Small, Medium, Large and Extra Large. Packaged 100 gloves per box.

CODE	DESCRIPTION	PACK QTY
450-A65-S092-X31	Vinyl Gloves - extra large	10 x boxes of 100
450-A65-S091-X31	Vinyl Gloves - large	10 x boxes of 100
450-A65-S090-X31	Vinyl Gloves - medium	10 x boxes of 100
450-A65-S089-X31	Vinyl Gloves - small	10 x boxes of 100

## Detectable Detect-a-Glove Guard

The Detect-a-Glove Guard has a proven record of keeping gloves close at hand thereby reducing glove loss and helping to reduce hand injury. Made from metal detectable plastic and safety breakaway design.

CODE	DESCRIPTION	PACK QTY
452-A95	Detectable Glove Guard	10
452-A96	Detectable Utility Guard with Belt Clip	10

## Detectable Glove Dispensers

Wall-mounted or hanging dispenser to accommodate standard size boxes of 100 disposable gloves, keeping an area tidy whilst providing easy access to gloves. Manufactured to accommodate 1, 2, 3 or 4 boxes of disposable gloves and is available in the full range of 9 hygiene colours. Blue, Black, Red, Green, Yellow, White, Purple, Orange and Pink. Also available as an enclosed unit or with an integrated hanging hook.

CODE	DESCRIPTION	PACK QTY
451-A151-P01	Detectable Glove Dispenser - 1 box capacity	1
451-A152-P01	Detectable Glove Dispenser - 2 box capacity	1
451-A153-P01	Detectable Glove Dispenser - 3 box capacity	1
451-A154-P01	Detectable Glove Dispenser - 4 box capacity	1
451-A155-P01	Detectable Glove Dispenser with Integrated Hanging Hook	1
451-A156-P01	Detectable Glove Dispenser - Enclosed Dispenser	1

## Stainless Steel Glove Dispensers

Waste and contamination are just two challenges for food processing management teams unless they establish storage and dispensing systems that are easy to find and firmly fixed for straight forward access. Detectamet's new Stainless Steel Glove Dispensers help them to successfully meet these challenges. Made from high quality stainless steel they are supplied in four sizes to hold a single box of 100 gloves or up to four boxes loaded vertically. They can be screw mounted onto a wall where they will be easy to clean and sanitise.

Additional varieties include a single box dispenser that has a bar hook to hang from a pipe, bar or the top of a panel. Another option is a single box that is enclosed with a front oval exit and a small side access to allow for replacement of an empty box.



## Detectable Colour Coded Hygienic 'Clean Ear' Ear Plug System (Developed to minimise the risk of infection through cross contamination)

The New 'Clean Ear' System has the unique benefit of different coloured reusable ear plugs i.e Red = Left Ear & Blue = Right Ear on either end of a cord or Expandaband (adjustable head band).

The new system also includes a unique Hygienic Storage box, the 'Clean Ear' storage box has been specifically designed to enhance reusable ear plug hygiene and safety. This box has clearly marked individual storage compartments for Left or Right plug, drain holes to allow air to pass through to assist in drying the plugs after washing / cleaning etc. Meeting the requirements of EN352-2 and are CE-Marked in accordance with the requirements of European Directive 89/686/EEC.

CODE	DESCRIPTION	PACK QTY
410-P21-S101-X18	Blue Cord, 2 Flange	200
410-P23-S101-X18	Red Cord, 2 Flange	200
410-P21-S102-X18	Blue Cord, 3 Flange	200
410-P23-S102-X18	Red Cord, 3 Flange	200
416-A65-S159-P01	Detectable Storage Box Blue	25
416-A65-S159-P03	Detectable Storage Box Red	25



Colour



## Detectable Expandaband

This unique product has been designed to ensure maximum comfort. The adjustable detectable pressure band allows the wearer to adjust the pressure exerted into the ear canal to suit their own comfort factor. Used with the sonar detectable earplugs 2 flange. Expandaband allows earplugs to be clear of work surfaces to avoid cross-contamination. Can be worn under the chin or behind the head. Meeting the requirements of EN352-2 and are CE-Marked in accordance with the requirements of European Directive 89/686/EEC. Colours available - Blue & Red

CODE	DESCRIPTION	PACK QTY
413-S101-X07	Expandaband - 2 Flange	30
413-S402-X18	Expandaband - Replacement Ear Plugs 2 Flange	200



Colour



## Fully Detectable Reusable Sonar Earplugs Available Corded or Uncorded

Designed for maximum comfort and performance. Made from medical grade detectable silicone rubber, these plugs are the ultimate choice for the discerning user. The two flange patented design (SNR24) Patented product No. 69820878.1 and three flange (SNR24) exerts only sufficient pressure within the ear canal to ensure the required acoustic seal. Meeting the requirements of EN352-2 and are CE-Marked in accordance with the requirements of European Directive 89/686/EEC. Available in blue or red. 100% Detectable - both ear plug and cord.

CODE	DESCRIPTION	PACK QTY
410-P20-S101-X18	Fully Detectable Cord & Plug - Blue 2 flange	200
410-P20-S102-X18	Fully Detectable Cord & Plug - Blue 3 flange	200
410-P22-S101-X18	Fully Detectable Cord & Plug - Red 2 flange	200
410-P22-S102-X18	Fully Detectable Cord & Plug - Red 3 flange	200
415-S102-P01-X18	Fully Detectable 3 flange Blue - Uncorded	200
415-S102-P03-X18	Fully Detectable 3 flange Red - Uncorded	200
415-S101-P01-X18	Fully Detectable 2 flange Blue - Uncorded	200
415-S101-P03-X18	Fully Detectable 2 flange Red - Uncorded	200



Colour



**Tel: 01759 304 200**  
**www.detectamet.co.uk**  
**orders@detectamet.com**



Colour



Colour



Colour



## Fully Detectable Disposable Earplugs

The fully detectable disposable earplugs come complete with a metal insert inside the foam plug and is available with or without a fully detectable cord. Meeting the requirements of EN352-2 and are CE-Marked in accordance with the requirements of European Directive 89/686/EEC. SNR 36dB

CODE	DESCRIPTION	PACK QTY
412-P05-A150-X29	Fully Detectable Disposable Earplugs With Cord - Yellow	250
412-P01-A150-X29	Fully Detectable Disposable Earplugs With Cord - Blue	250
412-P01-A149-X29	Fully Detectable Disposable Earplugs Without Cord - Blue	250

## Earplug Dispenser Box

Blank Earplug Dispenser Box supplied in a pack of 10. Capacity holds up to 250 sets of Detectamet's corded earplugs. Detectamet can 'own brand' / laser mark each box (please enquire for details / prices).

CODE	DESCRIPTION	PACK QTY
414-S155-P06	Earplug Dispenser Box (Capacity 250 pairs)	10

## Fully Detectable Sleeve Covers

The new disposable sleeve protector is fully detectable because it is made from Detectamet's unique metal and X-ray detectable polymer. The new hard wearing polymer completely protects the food worker with an elasticated cuff and upper arm. The blue sleeve covers measure 19cm x 38cm long and are supplied in packs of 1000. These sleeve covers have been approved for safe contact with food under the relevant EU and US FDA requirements.

CODE	DESCRIPTION	PACK QTY
438-P01-X32	Fully Detectable Sleeve Covers - Blue	1000

## Fully Detectable Shoe Covers

Trials have shown that Detectamet's new disposable shoe cover material is more resilient than other plastics. By using Detectamet's unique metal and X-ray detectable polymer the whole covers are fully detectable. The blue shoe covers measure 14cm x 40cm and are in boxes of 1000 (500 pairs) and like all Detectamet products they are supplied within Detectamet's ISO 9001:2000 accredited quality management system.

CODE	DESCRIPTION	PACK QTY
439-P01-X32	Fully Detectable Shoe Covers - Blue	1000

## Automatic Shoe Cover Dispensers

Makes easy work of applying shoe covers hygienically before entering food production areas. Ideal for factories, hospitals, farms, veterinarians, building sites and cleanroom or laboratory environments that want to improve worker safety, compliance and eliminate cross-contamination.

The Detectamet Automatic Shoe Cover Dispenser eliminates the need for your hands to go anywhere near your shoes at all. Covering a large variety of shoe sizes while maintaining a robust and reliable structure.

Also available is a heavy duty stainless steel cover for added durability.

CODE	DESCRIPTION	PACK QTY
	Automatic Shoe Cover Dispenser	1
459-P49	Stainless Steel Shoe Cover Dispenser Cover/Guard	1



## Detectable Disposable FFP2 & FFP3 Dust Masks

Our most popular disposable FFP masks incorporate various designs and protection factors. Comfortable effective respiratory protection against harmful and carcinogenic dusts, fumes and aerosols based on water and oil and are designed for the food industry with blue visual and detectable plastic parts.

Standards:

- EN149:2001+A1:2009 (Europe)
- NIOSH N99 (USA)
- AS/NZS1716:2012 P2 (Australia/New Zealand)

Fit testing kit available on page 77.

CODE	DESCRIPTION	PACK QTY
460-T026-A65	FFP2 NR Valved Fold Flat Blue Detectable Mask	10
460-T027-A65	FFP3 NR Valved Blue Detectable Mask	5
460-T027-A66	FFP3 NR Valved Standard Non-Detectable Mask	5



## Disinfectant and Probe Wipes & Dispensers

These wipes use an alcohol free advanced hard surface/multi surface cleaner and sanitiser that is one of today's fastest acting and most powerful germ killing products. Within 30 seconds it can kill 99.9% of bacteria yet contains no skin irritants within its formulation. Both Detectamet's Multi-Surface Anti-Bacterial Wipes and Probe Wipes are supplied in a re-sealable container of 200 individual wipes with either a standard lid or metal detectable lid.

Refill packs containing 200 wipes are available and a wall mounted storage station/dispensers can be ordered to help you keep work areas tidy and ensure that wipes are always close at hand when needed.

CODE	DESCRIPTION	PACK QTY
430-T210-X35-A87	200mm x 200mm Disinfectant Wipes with Standard Lid	Tub of 200
430-T211-X35-A87	130mm x 130mm Probe Wipes with Standard Lid	Tub of 200
430-T210-X35-A88	200mm x 200mm Disinfectant Wipes with Detectable Lid	Tub of 200
430-T211-X35-A88	130mm x 130mm Probe Wipes with Detectable Lid	Tub of 200
432-T280-P01-X35	200mm x 200mm Disinfectant Wipes Fully Detectable Container	Tub of 200
432-T283-P01-X35	130mm x 130mm Probe Wipes Fully Detectable Container	Tub of 200
430-T212-X35-A89	200mm x 200mm Disinfectant Wipes - Refill	200
430-T213-X35-A89	130mm x 130mm Probe Wipes - Refill	200
431-A25-X37-P01	Detectable Wall Mounted Dispenser - to suit single tub of Probe wipes	1
431-A25-X36-P01	Detectable Wall Mounted Dispenser - to suit single tub of Disinfectant wipes	1
431-A25-X38-P01	Detectable Wall Mounted Dispenser - to suit 1x tub of Probe & 1x tub of Disinfectant wipes	1



## Stainless Steel Wipe Dispensers

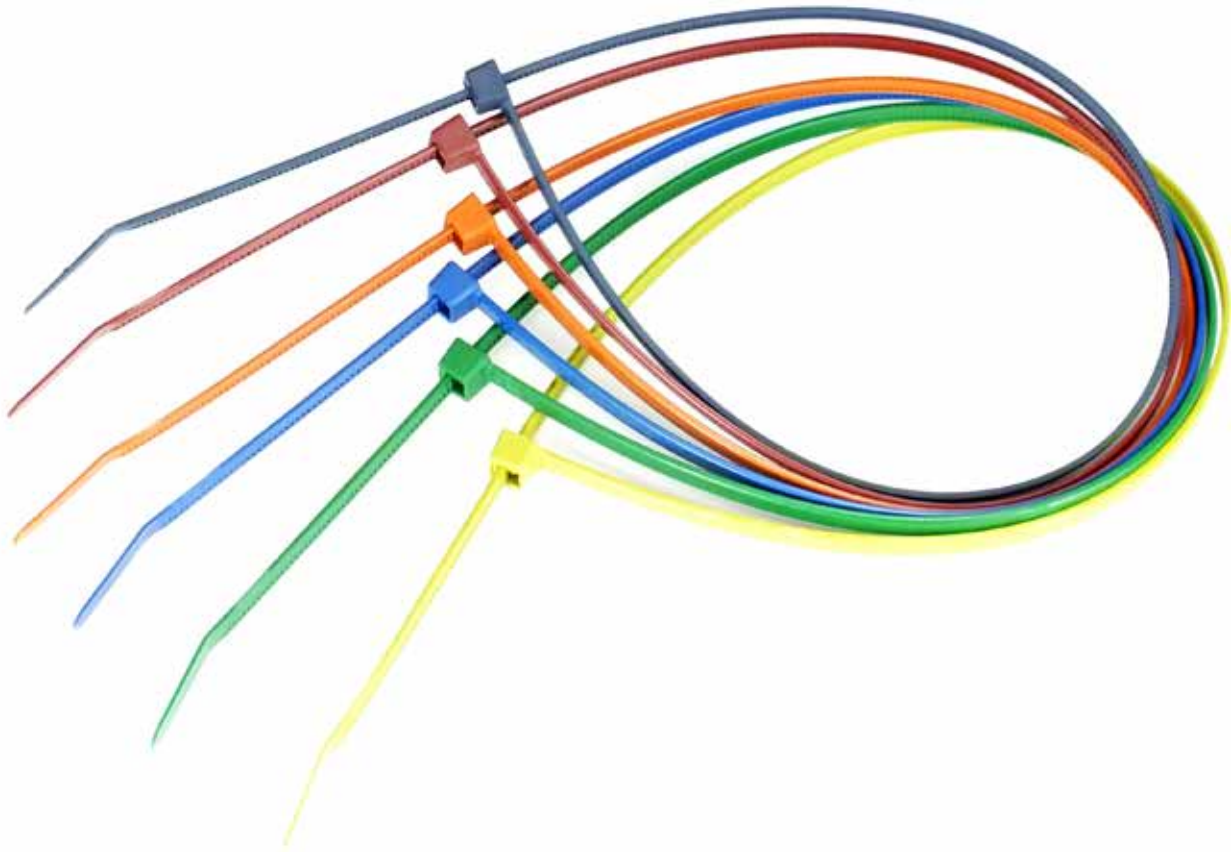
The Wipe Dispenser Holders are designed to hold one or two tubs of wipes and can be mounted on a handy wall. These will help to keep the work areas free of clutter and further reduce the risk of mislaying the tubs and the possibility of contamination.

CODE	DESCRIPTION	PACK QTY
431-A25-X37-P45	Stainless Steel Wall Mounted Dispenser - to suit single tub of Probe wipes	1
431-A25-X36-P45	Stainless Steel Wall Mounted Dispenser - to suit single tub of Disinfectant wipes	1
431-A25-X38-P45	Stainless Steel Wall Mounted Dispenser - to suit 1x tub of Probe & 1x tub of Disinfectant wipes	1



**Tel: 01759 304 200**  
**www.detectamet.co.uk**  
**orders@detectamet.com**





Specifically designed for use within the food and pharmaceutical industries. Ideal for sack and bag tying in addition to cable and other simple retaining purposes.

The Detectamet range of cable ties offer feature unique and innovative features.

The Detectamet Detectable Cable Ties have a metal content dispersed throughout the head and strap - so even cut-off sections can be detected.

Various sizes incorporate internal serrations allowing for a positive hold onto cable, hose and pipe bundles. The design of the head guarantees a high tensile strength whilst allowing a very low insertion force, this, combined with the bent tail design of many of the ties, ensures a simple and quick installation.

Easily installed by hand, they are suitable for the installation of cabling in and around the manufacturing process areas.

All ties are designed to make the task of fastening, bundling, clamping and managing wires easier.

When strength, aesthetics, reliability and performance are required, the Detectamet range of Metal Detectable Cable ties have all your requirements covered.

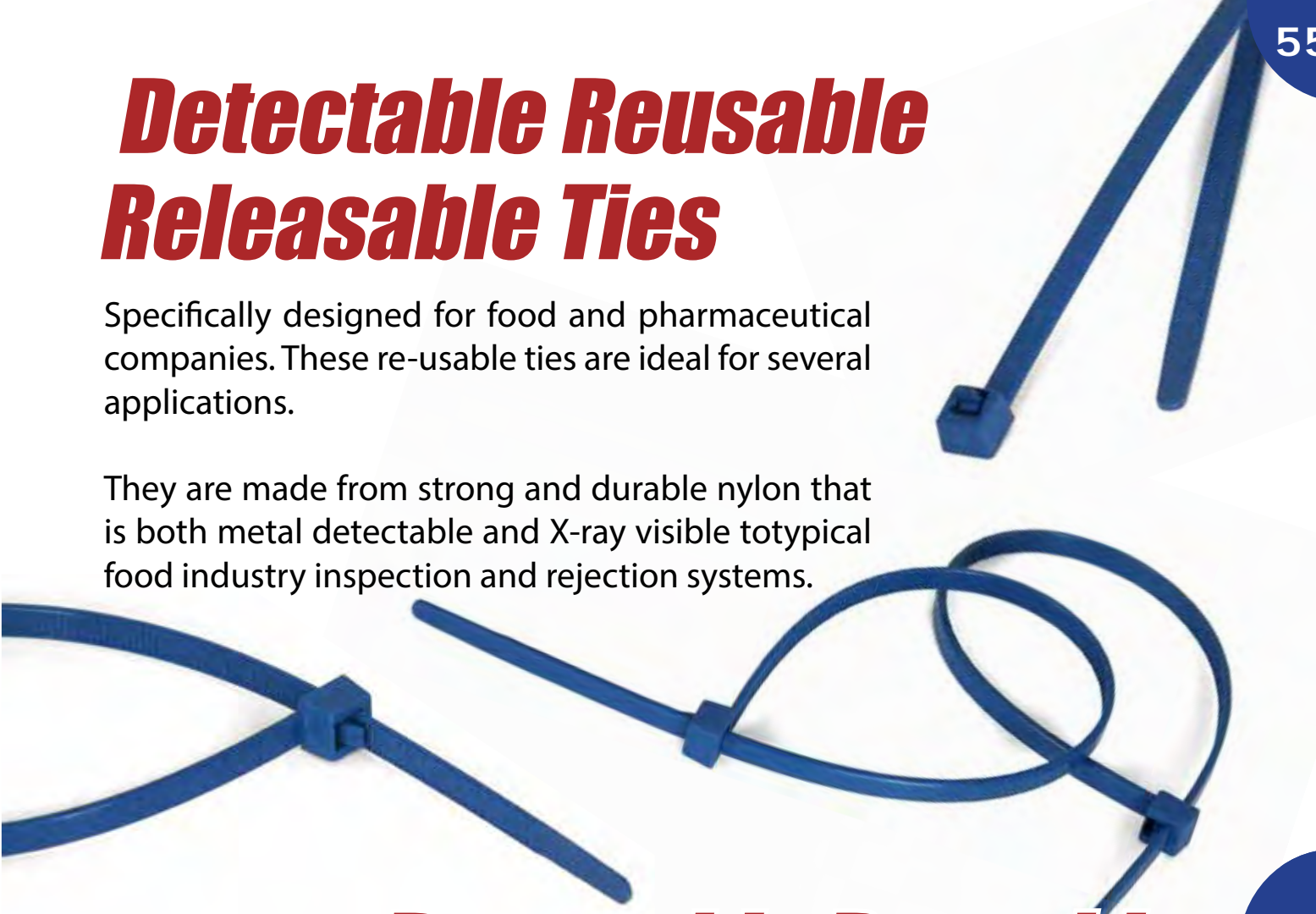
## DETECTABLE CABLE TIES

- |    |   |
|----|---|
| 56 | Detectable Nylon & Polypropylene Cable Ties   |
| 56 | Stainless Steel Cable Ties                    |
| 57 | Detectable Cable Clamps & Cable Tidy          |
| 57 | Stainless Steel & Detectable Cable Tie Mounts |
| 58 | Detectable Bag Sealer / Gripper               |

# ***Detectable Reusable Releasable Ties***

Specifically designed for food and pharmaceutical companies. These re-usable ties are ideal for several applications.

They are made from strong and durable nylon that is both metal detectable and X-ray visible to typical food industry inspection and rejection systems.



## ***Detectable Reusable Cable Clamps***



Strong, durable and manufactured from Detectamet Food Safe Detectable Plastic. This detectable component is a releasable and reusable device for organising all cables, ropes, belts, wires, cords, hand tools, office and computer peripherals.



**Tel: 01759 304 200**  
**[www.detectamet.co.uk](http://www.detectamet.co.uk)**  
**[orders@detectamet.com](mailto:orders@detectamet.com)**

## Detectable Nylon & Polypropylene Cable Ties

Specifically designed for use within the food, beverage and pharmaceutical industries. Ideal for sack and bag tying etc. Made from strong and durable nylon or polypropylene. As well as being detectable, the PP cable ties will float when dropped into liquid. An ideal tie to use in the beverage industries and relevant food environments.

CODE	DESCRIPTION	PACK QTY
800-CT03-S139-X39	92mm x 2.4mm - Nylon	100
800-CT03-S113-X39	145mm x 3.4mm - Nylon	100
800-CT03-S114-X39	150mm x 3.5mm - Nylon	100
800-CT03-S116-X39	185mm x 4.6mm - Nylon	100
800-CT03-S118-X39	200mm x 4.6mm - Nylon	100
800-CT03-S125-X39	380mm x 4.7mm - Nylon	100
800-CT03-S126-X39	390mm x 7.6mm - Nylon	100
800-CT04-S126-X39	390mm x 4.6mm - Nylon. Blue, Red, Green, Orange, Yellow	100
800-CT01-S139-X39	92mm x 2.4mm - Nylon with Stainless Steel Lock	100
800-CT01-S117-X39	186mm x 4.8mm - Nylon with Stainless Steel Lock	100
800-CT01-S122-X39	340mm x 7.0mm - Nylon with Stainless Steel Lock	100
800-CT01-S123-X39	360mm x 4.8mm - Nylon with Stainless Steel Lock	100
800-CT08-S139-X39	92mm x 2.4mm - Polypropylene with Stainless Steel Lock	100
800-CT08-S117-X39	186mm x 4.8mm - Polypropylene with Stainless Steel Lock	100
800-CT08-S122-X39	340mm x 7.0mm - Polypropylene with Stainless Steel Lock	100
800-CT08-S123-X39	360mm x 4.8mm - Polypropylene with Stainless Steel Lock	100

## Detectable Reusable Nylon Cable Ties

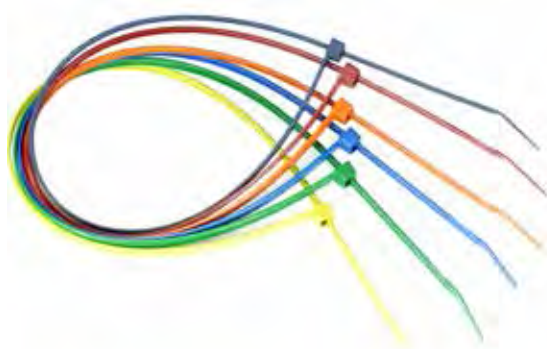
Specifically designed for use within the food and pharmaceutical industries. Ideal for sack and bag tying etc. Made from strong and durable nylon. Now available as a release and reusable tie.

CODE	DESCRIPTION	PACK QTY
800-CT02-S120-X39	250mm x 4.7mm	100

## Stainless Steel Cable Ties

Metal ties are ideal for all areas with requirements for high holding force, reliability and fire resistance. The Detectamet range of stainless steel cable ties can be used in chemical industry and on oil platforms as well as in mass transit, shipbuilding and mining industry.

Stainless Steel Cable Ties are also suitable for machine building, apparatus construction and in the outside area of radio technology. Additionally the ties are a good solution to fix lighting in theatres and exhibition halls.





## Detectable Cable Clamps

Detectable cable clamp is strong and durable, manufactured from Detectamet Food Safe Detectable Plastic. This detectable component is a releasable and reusable device for organising all cables, ropes, belts, wires, cords, hand tools, office and computer peripherals.

CODE	DESCRIPTION	PACK QTY
802-S089-T020	Small (11mm - 29mm)	2
802-S091-T020	Large (23mm - 53mm)	2



## Detectable Cable Tidy

Detectamet's new spiral cable tidy is suitable for organising and protecting cables within industries that requires material to be detectable, such as bakery, beverage, confectionary, dairy, meat & poultry.

- Available in 4mm, 9mm & 16mm diameters
- Supplied on a 30m roll.

CODE	DESCRIPTION	PACK QTY
803-S223-P01	Detectable Cable Tidy - 16mm diameter, 30m roll	1 roll
803-S225-P01	Detectable Cable Tidy - 9mm diameter, 30m roll	1 roll
803-S224-P01	Detectable Cable Tidy - 4mm diameter, 30m roll	1 roll



## Detectable Cable Tie Mounts

Blue in colour for easy visual detection, the screw fixing mounts can be secured to any surface to hold a cable tie in place. This screw fixing element means that the product does not require any adhesive backing, removing the risk of the adhesive becoming detached from the base and entering the manufacturing process undetected.

The mounts also boast a high metal pigment, meaning that even small 'cut-off' pieces are detectable and they can be used as part of the HACCP process.

CODE	DESCRIPTION	PACK QTY
808-S036-X11	Detectable Cable Tie Mounts 19mm x 19mm	
808-S037-X11	Detectable Cable Tie Mounts 28mm x 28mm	



## Stainless Steel Cable Tie Mounts

Suitable for the secure fixing of cables, tubing, conduits and pipes within the most arduous of environments. Providing a complete fastening and fixing solution when used in conjunction with stainless steel ties up to 10.0 mm width. They are ideal for use within shipbuilding, oil and gas (offshore), industrial machinery and vehicles, food and beverage, power, renewable energy and process industries.

- 10mm slot width
- Single 4mm, 5mm or 6mm fixing hole

CODE	DESCRIPTION	PACK QTY
807-S002-X11	Stainless Steel Cable Tie Mounts 4.2mm hole size	
807-S032-X11	Stainless Steel Cable Tie Mounts 5.3mm hole size	
807-S035-X11	Stainless Steel Cable Tie Mounts 6.3mm hole size	



**Tel: 01759 304 200**  
**www.detectamet.co.uk**  
**orders@detectamet.com**



## Detectable Bag Gripper / Sealer

Reduce the risk of cross contamination and preserve hygienic standards by securing bag contents with this unique Food Safe Detectable Bag Gripper / Sealer.

The locking ability of the Detectable Bag / Sack Gripper will help to minimise the risk of contamination, leakage and accidents within your plant / processing area.

CODE	DESCRIPTION	PACK QTY
805-S231-T098	Detectable Bag Gripper / Sealer	5



## Detectable Plastic Bag Clip / Closure

The NEW Detectamet Detectable Plastic Clip / Closure is fully Metal Detectable & X-Ray Visible. Durable at very low temperatures of -50°C / -58°F.

- Sealing length: 320mm - 12 1/2 inch
- Total length: 362mm - 14 5/16 inch
- Weight: 94g.

CODE	DESCRIPTION	PACK QTY
804-S236	Detectable Bag Clip	1



## Detectable Screw & Nail Holder

Manufactured from Detectamet Food Safe Detectable Plastic which is both Metal Detectable & X-Ray Visible.

Designed for a variety of engineering applications within the food and related industries.

- Available in three head sizes (small, medium & large)
- Length 75mm (3")
- Sold in packs of 50

CODE	DESCRIPTION	PACK QTY
801-S089-P01	Small - to suit panel pins	50
801-S090-P01	Medium - to suit nails	50
801-S091-P01	Large - to suit screws	50





The "Detectamet" range of Tags allow small traces of label fragments to be detected, at any stage in the production process. As well as detecting product contamination before delivery to its customers, food / pharmaceutical company users will also be able to write production and batch information on the tags, enabling complete traceability. Additional customer specific information can also be added to the Detectamet labels & tags in the range to order.

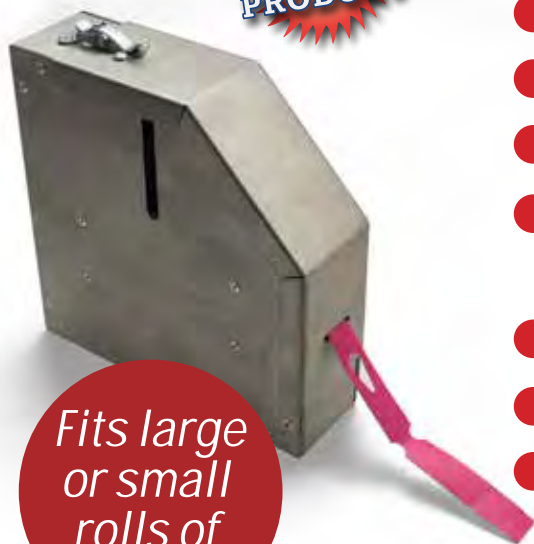
#### DETECTABLE KEYHOLE TAGS & LABELS

- |    |  |
|----|--|
| 61 | Detectable Keyhole Tags                        |
| 61 | Stainless Steel Keyhole Tag Dispensers         |
| 61 | Detectable Plastic Tags                        |
| 62 | Detectable Sequentially Numbered Plastic Tags  |
| 62 | Detectable Traceability Tags                   |
| 62 | Detectable Food Industry Health & Safety Signs |
| 62 | Detectable Plastic ID Tags                     |



# Stainless Steel Dispensers Are Just the Ticket

**NEW  
PRODUCT**



*Fits large  
or small  
rolls of  
tags*

- *Hygienic and easy to use*
- *Reduce contamination and errors*
- *Less waste and excellent life cycle cost*
- *Single and multi-roll dispensers for large or small tags*
- *304 stainless steel (316 grade by request)*
- *Holds large capacity rolls of 500 tags*
- *Pre-drilled holes for wall mounting*

- *Bespoke designs available*
- *Own branding - suitable for use with Detectamet's Laser Engraver.*

Perfect for production areas, food service, shipping rooms, retail, and industrial applications anywhere an easy to use label dispenser is needed. The dispenser features a hinged lid with latches for quick and easy refilling. A fill level indicator on the side shows when the roll is close to running out.



*large  
or small  
tags  
available*

Detectamet Keyhole Tags are ideal for recording details of in-process batches for HACCP and Traceability management. They are detectable, durable and are heat resistant to 150°C.

## Detectable Keyhole Tags

Detectamet standard keyhole tag features heat and strength resistance with all round durability - this tag will suit 80% of applications.

Detectamet Tag is a multi laminate material used for tags designed for the food processing environments and detectable by end of line metal detectors.

Tag Colours: Yellow, Orange, Red, White, Blue, Green, Brown, Purple, Pink and Beige.

Sizes: Small (25 x 190mm) & Large (50 x 279mm)

As well as detecting any actual contamination before delivery to its customers, food / pharmaceutical companies will also be able to use the range as a vehicle to print production and batch information, enabling complete tractability. Additional information can also be added to the Detectamet labels & tags in the range.

High heat and steam versions available. Please contact us for details.

CODE	DESCRIPTION	PACK QTY
555-P01-S119-X17	Blue Small (25 x 190mm)	500
555-P03-S119-X17	Red Small (25 x 190mm)	500
555-P10-S119-X17	Brown Small (25 x 190mm)	500
555-P08-S119-X17	Orange Small (25 x 190mm)	500
555-P05-S119-X17	Yellow Small (25 x 190mm)	500
555-P04-S119-X17	Green Small (25 x 190mm)	500
555-P06-S119-X17	White Small (25 x 190mm)	500
555-P01-S128-X17	Blue Large (50 x 279mm)	500
555-P03-S128-X17	Red Large (50 x 279mm)	500
555-P10-S128-X17	Brown Large (50 x 279mm)	500
555-P08-S128-X17	Orange Large (50 x 279mm)	500
555-P05-S128-X17	Yellow Large (50 x 279mm)	500
555-P04-S128-X17	Green Large (50 x 279mm)	500
555-P06-S128-X17	White Large (50 x 279mm)	500

## Stainless Steel Keyhole/Loop Tag Dispensers

Manufactured in Britain from high quality stainless steel the new Detectamet Keyhole Tag Dispensers are designed and made to hold single or multiple rolls of either large or small tags.

Perfect for production areas, food service, shipping rooms, retail, and industrial applications and anywhere a simple label/tag dispenser is needed. The dispensers are wall mountable and feature a hinged lid for quick and easy refilling. A view slot on the side indicates when the roll is close to running out. Bespoke sizes and designs are available, please contact us for more details.

CODE	DESCRIPTION	PACK QTY
558-S176	Stainless Steel Single Roll Large Tag Dispenser	1
558-S177	Stainless Steel Single Roll Small Tag Dispenser	1
558-S178	Stainless Steel 8 Roll Large Tag Dispenser	1
558-S179	Stainless Steel 8 Roll Small Tag Dispenser	1

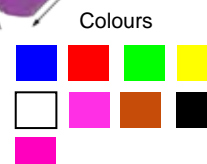
## Detectable Reusable Plastic Tags

The Detectamet ID tags have been developed to allow small traces of label and tag fragments to be detected & rejected at any stage of the production process. As food and pharmaceutical processing most commonly takes place across a Can be used in conjunction with our Detectamet Dry-Wipe pens, Marker Pens & Fine Marker Pens!

- Length: 285mm (11 1/4")
- Head size: 65mm (2 1/3") x 85mm (3 1/3")

Available in a pack of 100 tags sequentially marked 1-100. Ideal for including in your traceability systems.

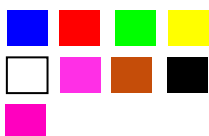
CODE	DESCRIPTION	PACK QTY
550-A65-P01-S074	Detectable Tags 265mm long - Blue	25
549-P01-S441-X21	1-100 Numbered Detectable Tags	100



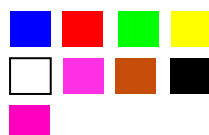
**Tel: 01759 304 200**  
**www.detectamet.co.uk**  
**orders@detectamet.com**



Colour



Colour



## Detectable Traceability Tags

Food / Pharmaceutical processing most commonly takes place across a number of areas in a production facility, contamination cases can often occur at any time. The detectable ID tags have been developed to allow small traces of label & tag fragments to be detected at any stage of the production process. Can be used in conjunction with the Detectamet range of Detectable Cable Ties. Available in nine colours: Blue, Red, Yellow, Green, White, Purple, Orange, Black and Pink. Size: 55mm (2 1/4") x 20mm (3/4").

CODE	DESCRIPTION	PACK QTY
205-A65-P01-S130	Detectable Traceability Tag	10

## Detectable Food Industry Health & Safety Signs

Detectamet are able to offer a wide range of metal detectable & x-ray visible mandatory health and safety signs designed for use within the food processing industry, or where the potential for foreign body contamination is a problem.

As well as our core range of industry standard health and safety signs, we can also supply custom designs and materials including Stainless Steel & Anodised Aluminium.

- Standard designs: Wear Hairnets, Wear Face Shields, Wear Safety Boots, Wash Your Hands, Wear High Visibility Jackets, Wear A Mask, Wear Protective Clothing, Wear Ear Protectors, Wear Protective Gloves, Detectable Products Area
- Sizes available: A3, A4 & A5.

## Detectable Plastic ID Tags

Manufactured from Detectamet's Detectable Plastic, the new ID tag is ideal as an identifier or where warnings are required. Available in Detectamet's full range of 8 colours for identification and colour coding.

- Small - 85mm (3 1/3") diameter x 3.2mm thick
- Large - 110mm (4 1/3") diameter x 3.2mm thick.

Suitable for laser engraving to include letters, numbers, company logos safety critical information. May also be hand marked using our range of permanent and erasable dry wipe markers.

Can be drilled to accommodate a split ring or easy attachment using a detectable cable tie.

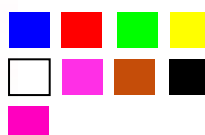
CODE	DESCRIPTION	PACK QTY
213-P01-S435	85mm diameter - undrilled	10
213-P01-S436	85mm diameter - drilled	10
213-P01-S437	85mm diameter - drilled with split ring	10
213-P01-S438	110mm diameter - undrilled	10
213-P01-S439	110mm diameter - drilled	10
213-P01-S440	110mm diameter - drilled with split ring	10

## Detectable Lockout & ID Tag

Manufactured from Detectamet's Fully Detectable Plastic, the new Lockout Sign ID tag is ideal as an identifier or where warnings are required. Available in Detectamet's full range of 9 colours for identification and colour coding. Dimensions: 70mm (2 3/4") x 123mm (4 7/8") x 2.8mm (1/8")

CODE	DESCRIPTION	PACK QTY
213-P01-S510	Reusable ID Tag Blue	10
548-A65	Detectable Equipment Lock Out Tag	10

Colour







Detectamet can manufacture a complete range of precision metal detector test pieces. Each calibrated test piece is colour coded for simple visual verification and fitted with a calibrated and certified bearing to ISO9002 and AFBMA Calibration.

We have developed a range of test products for X-Ray Machines which includes low, medium and high density materials acting as the medium and combining these with test contaminants of varying densities.

With our experience of producing high quality test pieces for metal and X-ray detection in the food and pharmaceutical industries we have found it increasingly beneficial to our clients to make information easily available for quality assurance purposes. All Test Pieces are supplied with a full certificate of conformity which we will keep a record of for you for 3 years.

Each Test Piece has a number etched onto its side which relates back to the Certificate of Conformity supplied by the bearing manufacturer. When our Testpieces are purchased from Detectamet our name will also be etched onto the Test Piece - allowing you or any member of staff to trace it back to us. Alternitavley we can add your company name upon request.

We can also etch extra numbers on to the Test pieces if required - to allow for individual identification purposes such as shift workers or issue numbers etc.

This ease of access coupled with a high quality manufacturing process, simple visible detection and colour coded verification makes Detectamet Test pieces a very cost effective way of managing the important aspects of safety through quality control.

Used in the following Industries:

- Metal Detector Manufacturer
- Metal Detector Service Industry
- Food Processing & Food Safety
- Pharmaceutical
- Clothing/Garment Inspection
- Footwear manufacturer

## METAL & X-RAY DETECTOR TEST PIECES

- 64 Metal Detector Test Pieces
- 64 X-Ray Detector Test Pieces
- 64 Test Piece Accessories

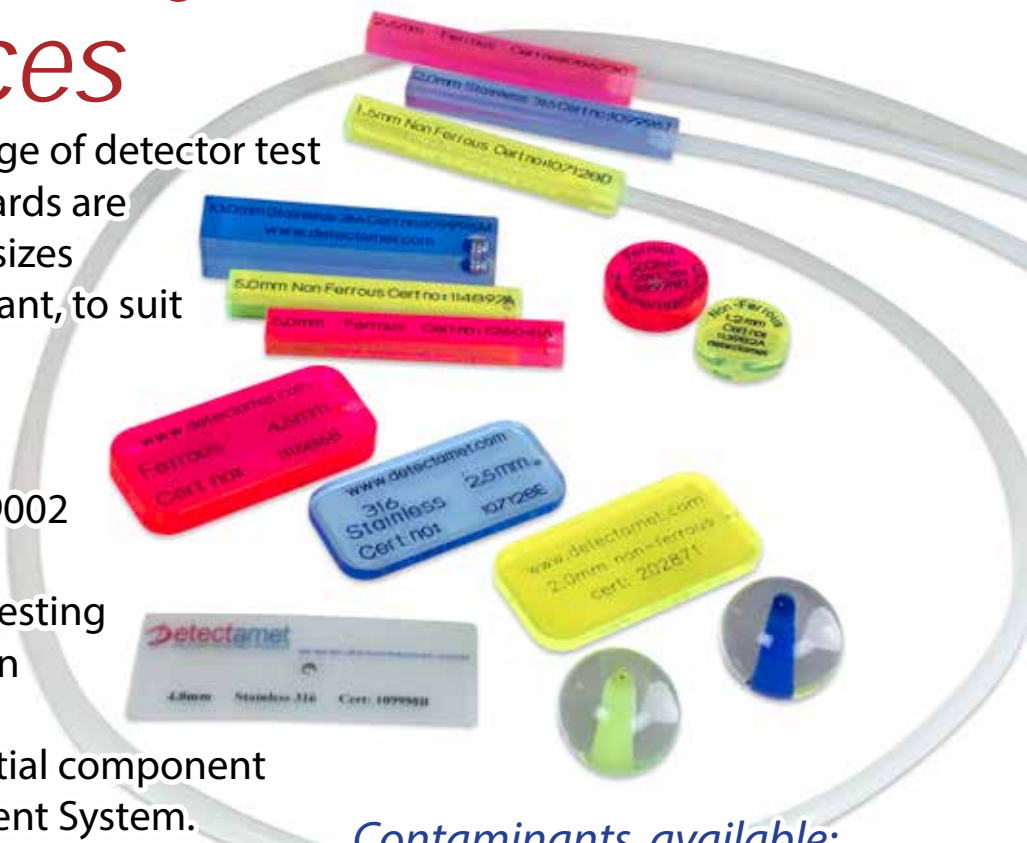
# Metal & X-Ray Detector Test Pieces

Detectamet's wide range of detector test pieces and x-ray test cards are available with various sizes and types of contaminant, to suit many applications.

All are calibrated and certified to BS EN ISO 9002 and UKAS calibration. Regular performance testing of both metal detection and x-ray inspection equipment is an essential component of a Quality Management System.

Confirming the accurate performance of a company's process controls to ensure compliance to the QMS equires calibrated test equipment with full traceability.

All Test pieces purchased from Detectamet are issued with a free of charge certificate of conformity relating to the contaminant.



## Contaminants available:

- Ferrous
- Non-Ferrous
- Stainless Steel 304 or 316
- Aluminium
- Glass
- Crystal Glass
- Ceramic
- Wire

## Detectable Storage Boxes

A versatile detectable storage box with clip fastening lid. Useful for any number of applications from holding test pieces, first aid dressings, coins and keys etc. The products in this range are all produced from a specially formulated material based on high impact food safe polypropylene. This material has the ability to be detected and rejected by typical metal detection and x-ray machines used in the food processing industry.



CODE	DESCRIPTION	PACK QTY
503-P01-A42	with secure locking clips - L220 x W145 x D45mm	1
500-S091-P01-S153	large blue - L215 x W140 x D40mm	1
500-S091-P03-S153	large red - L215 x W140 x D40mm	1
500-S089-P01-S143	small blue - L164 x W103 x D30mm	1
500-S089-P03-S143	small red - L164 x W103 x D30mm	1

# Stainless Steel & Aluminium Products

## Contents

### STAINLESS STEEL & ALUMINIUM STATIONERY

68	Anodised Aluminium Ring Binders
68	Stainless Steel Ring Binders
68	Stainless Steel & Aluminium Lever Arch Files
68	Stainless Steel File Holders
68	Stainless Steel & Anodised Aluminium Hanging Clipboards
69	Anodised Aluminium Clipboards
69	Stainless Steel Clipboards
69	Detectable Plastic Clipboards & Memo Holders
70	Ring Binder Clipboards
70	Stainless Steel Document Storage Trays
70	Flipcharts
71	Clipboard Clips, Hanging Hooks & Ring Binder Mechanisms
71	Stainless Steel Bulldog Clips
72	Mobile Aluminium Desk
72	Aluminium Form Holders
72	Recipe Card Holders
74	Food Factory Metal Stick Pens
74	Manager's Stainless Steel Retractable Pens

### STAINLESS STEEL STORAGE, MIXING & HANDLING EQUIPMENT

76	Stainless Steel 304 Scoops & 316 Pharma Scoops
76	Stainless Steel Pails & Buckets
77	Stainless Steel Shovels
77	Stainless Steel Paddles
78	Stainless Steel Forks
78	Stainless Steel Keyhole Loop Tag Dispenser
79	Stainless Steel Multi Purpose PPE Dispenser
79	Stainless Steel Tote Bin Cover Dispenser
80	Stainless Steel Disposable Glove Dispenser
80	Stainless Steel Wipe Dispenser

## HOW TO PLACE YOUR ORDER

[orders@detectamet.com](mailto:orders@detectamet.com)

tel: +44 (0)1759 304200

fax: +44 (0)1759 304798

[www.metal-detectable-products.com](http://www.metal-detectable-products.com)



**Tel: 01759 304 200**  
**[www.detectamet.co.uk](http://www.detectamet.co.uk)**  
**[orders@detectamet.com](mailto:orders@detectamet.com)**





We specialise in the design and manufacture of clipboards ring binders, lever arch files, recipe card holders with the food, pharmaceutical, health and catering industries in mind, though the products are popular and suitable for all industries and applications.

A wide range of sizes and styles are available and we can modify many designs to meet with your individual requirements.

All our products are manufactured from Anodised Aluminium and grade 304 stainless steel. Materials/Products have been inspected in accordance with our own quality arrangements. All finished products incorporate rounded edges with no sharp corners.

#### STAINLESS STEEL & ALUMINIUM STATIONERY

68	Anodised Aluminium Ring Binders
68	Stainless Steel Ring Binders
68	Stainless Steel & Aluminium Lever Arch Files
68	Stainless Steel File Holders
68	Stainless Steel & Anodised Aluminium Hanging Clipboards
69	Anodised Aluminium Clipboards
69	Stainless Steel Clipboards
69	Detectable Plastic Clipboards & Memo Holders
70	Ring Binder Clipboards
70	Stainless Steel Document Storage Trays
70	Flipcharts
71	Clipboard Clips, Hanging Hooks & Ring Binder Mechanisms
71	Stainless Steel Bulldog Clips
72	Mobile Aluminium Desk
72	Aluminium Form Holders
72	Recipe Card Holders
74	Food Factory Metal Stick Pens
74	Manager's Stainless Steel Retractable Pens

# A4 Stainless Steel Stackable Document Filing Trays



- Generous capacity
- Ideal for production area environments
- Manufactured from high quality stainless steel
- Stackable or free standing


 Detectamet  
**LASER**  
 E N G R A V I N G

## Stainless Steel File Holders

- Manufactured from high quality hygienic grade 304 Stainless Steel
- Available in 3 sizes to accomodate either 3, 4 or 5 folders
- Available free standing for desktop storage or with keyhole points for wall mounting



Available  
in 3 sizes

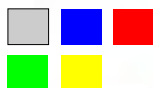


Visit [www.detectamet.co.uk](http://www.detectamet.co.uk) for more of our extensive range of stainless steel products.

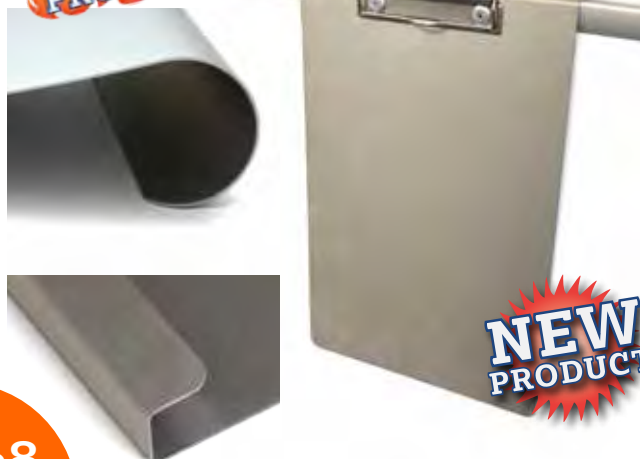
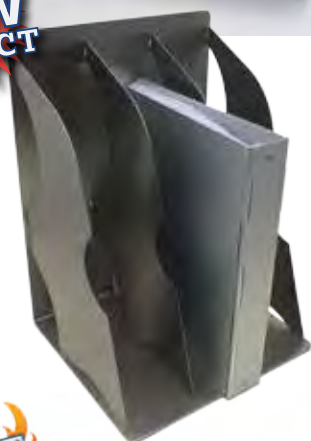
Tel: 01759 304 200  
[www.detectamet.co.uk](http://www.detectamet.co.uk)  
[orders@detectamet.com](mailto:orders@detectamet.com)



Aluminium Ring Binder Colours



**NEW  
PRODUCT**



**NEW  
PRODUCT**

## Stainless Steel & Aluminium Ring Binders

These products have been manufactured from high quality stainless steel & aluminium, available with 2, 3 and 4 rings.

Benefits Include:

- Manufactured from top quality, stylish Anodised Aluminium or Stainless Steel.
- Ideal for production area environments or for archiving important documents.
- Heavy duty and lightweight - beneficial if used during audits and daily record taking
- Ability to wipe clean

CODE	DESCRIPTION	PACK QTY
311-P46-O06-A143	A4 - Aluminium 2 ring	1
311-P46-O06-A144	A4 - Aluminium 4 ring	1
311-P46-O07-A144	A3 - Aluminium 4 ring	1
311-P32-O06-A141	A4 - Stainless Steel 2 ring	1
311-P32-O06-A142	A4 - Stainless Steel 4 ring	1
311-P32-O04-A142	A3 - Stainless Steel 4 ring	1

## Stainless Steel & Aluminium Lever Arch Files

Exclusively by Detectamet. Manufactured from Stainless Steel and Anodised Aluminium and has been developed with food, pharmaceutical, health and catering industries in mind.

- Supplied complete with compressor bar
- Spine width - 80mm

CODE	DESCRIPTION	PACK QTY
317-P31-O18	A4 Size Anodised Aluminium	1
317-P32-O18	A4 Size Stainless Steel	1

## Stainless Steel File Holder with Hanging Hook

Files and documents are synonymous with organisation and tidiness. Yet where do you keep them so they are out of the way and immediately to hand? The new Detectamet Stainless Steel File Holder with Hanging Clip can be easily placed on a handy wall or partition.

Dimensions 290mm x 342mm x 95mm (approx. 11 1/2" x 13 1/2" x 3 3/4").

CODE	DESCRIPTION	PACK QTY
595-A98	Stainless Steel File Holder with Hanging Hook	1

## Stainless Steel File Holders

Manufactured from high quality hygienic grade 304 Stainless Steel, Detectamet's range of ring binder and lever arch file holders are available in 3 sizes to accommodate either 3, 4 or 5 folders. Available free standing for desktop storage or with keyhole points for wall mounting.

CODE	DESCRIPTION	PACK QTY
312-P32-S253	Stainless Steel 3 Space File Holder	1
312-P32-S254	Stainless Steel 4 Space File Holder	1
312-P32-S255	Stainless Steel 5 Space File Holder	1

## Stainless Steel & Aluminium Hanging Clipboards

Hanging stainless steel or anodised aluminium clipboards with a folded or rolled top edge. Fits easily over most doors, carts or hospital beds. Clipboard hangs where you need it with the hassle of mounting hardware. These sturdy clipboards feature a variety of compact and heavy duty clips from Detectamet's complete range of clipboard clips and ring binder mechanisms.

CODE	DESCRIPTION	PACK QTY
300-O22-P45-A10	A3 Stainless Steel Rolled Top Clipboard - HD Clip	1
300-O17-P45-A10	A4 Stainless Steel Rolled Top Clipboard - HD Clip	1
300-O16-P45-A10	A4 Stainless Steel Folded Top Clipboard - HD Clip	1
300-O17-P30-A10	A4 Aluminium Rolled Top Clipboard - HD Clip	1
300-O16-P30-A10	A4 Aluminium Folded Top Clipboard - HD Clip	1



## A5, A4 & A3 Anodised Aluminium & Stainless Steel Clipboards

The aluminium clipboard has been developed with food, pharmaceutical, health and catering industries in mind.

Benefits Include:

- Manufactured from top quality, stylish Anodised Aluminium or heavy duty Stainless Steel.
- Ideal for production area environments or for archiving important documents.
- Heavy duty and lightweight - beneficial if used during audits and daily record taking
- Ability to wipe clean
- Available with a choice of 6 clip types (except DTM A66210)
- Stainless steel clip can be etched with your company details

CODE	DESCRIPTION	PACK QTY
300-O06-P30	A4 Anodised Aluminium Portrait (Landscape also available)	1
300-O07-P30	A3 Anodised Aluminium Portrait (Landscape also available)	1
300-O08-P30	A5 Anodised Aluminium Portrait (Landscape also available)	1
300-O06-P45	A4 Stainless Steel Portrait (Landscape also available)	1
300-O07-P45	A3 Stainless Steel Portrait (Landscape also available)	1
300-O06-P45	A5 Stainless Steel Portrait (Landscape also available)	1



## Stainless Steel Wall Mounted Clip Board Holder

The new Detectamet wall mounted stainless steel clip board or file holder can be easily installed on a handy wall or partition. There are two ready to use sizes designed to take A4 or A3 sized clipboards or files. The high quality 304 grade stainless steel is of a high hygiene standard. Produced in Britain, the A4 and A3 units can be tailor made using 316 grade stainless steel and special dimension units can also be made to order.

The A4 unit measures 247mm x 243mm x 40mm (approx. 9¾" x 9½" x 1½") and will hold two or three A4 clip boards. The A3 unit will hold five or six A4 clip boards or three A3 and measures 250mm x 490mm x 40mm (approx. 9¾" x 19¼" x 1½").

CODE	DESCRIPTION	PACK QTY
458-S04	A4 Stainless Steel Document/File Holder	1
458-S03	A3 Stainless Steel Document/File Holder	1



## Detectable Plastic Clipboard

Made using Detectamet's unique detectable plastic polymer.

- Extremely lightweight
- Landscape or Portrait
- Ability to wipe clean
- Available with a choice of 6 clip types
- Stainless steel clip can be etched with your company details.

CODE	DESCRIPTION	PACK QTY
300-O06-P01	A4 Anodised Aluminium Portrait (Landscape also available)	1
300-O07-P01	A3 Anodised Aluminium Portrait (Landscape also available)	1
300-O08-P01	A5 Anodised Aluminium Portrait (Landscape also available)	1
300-O06-P01	A4 Stainless Steel Portrait (Landscape also available)	1
300-O07-P01	A3 Stainless Steel Portrait (Landscape also available)	1
300-O06-P01	A5 Stainless Steel Portrait (Landscape also available)	1



Tel: 01759 304 200  
[www.detectamet.co.uk](http://www.detectamet.co.uk)  
[orders@detectamet.com](mailto:orders@detectamet.com)



## A4, A3 & A5 Ring Binder Clipboards

Chrome Plated Ring Binder Rings attached to A4, A3 & A5 size clipboards manufactured from Detectable Plastic, Stainless Steel or Anodised Aluminium.

Available with 2 Rings (30mm diameter rings) or 4 Rings (43mm diameter rings).

- A4 Size: 355mm (14") x 229mm (9")
- A3 Size: 457mm (18") x 355mm (14")
- A5 size available on request.

Ring Binder Mechanism available as a separate item.

Detectable Plastic Ring Binder Clipboard available in Blue, Black, Red, Green, Yellow, White, Purple, Orange and Pink.

CODE	DESCRIPTION	PACK QTY
300-O04-P01-A139	Detectable Plastic, 4 Ring, A3 Landscape	1
300-O04-P01-A138	Detectable Plastic, 2 Ring, A3 Landscape	1
300-O05-P01-A139	Detectable Plastic, 4 Ring, A4 Landscape	1
300-O06-P01-A138	Detectable Plastic, 2 Ring, A4 Portrait	1
300-O04-P45-A138	Stainless Steel, 2 Ring, A3 Landscape	1
300-O04-P45-A139	Stainless Steel, 4 Ring, A3 Landscape	1
300-O06-P45-A138	Stainless Steel, 2 Ring, A4 Portrait	1
300-O05-P45-A138	Stainless Steel, 2 Ring, A4 Landscape	1
300-O05-P45-A139	Stainless Steel, 4 Ring, A4 Landscape	1
300-O05-P46-A139	Anodised Aluminium, 4 Ring, A4 Landscape	1
300-O06-P46-A138	Anodised Aluminium, 2 Ring, A4 Portrait	1
300-O04-P46-A138	Anodised Aluminium, 2 Ring, A3 Landscape	1
300-O04-P46-A139	Anodised Aluminium, 4 Ring, A3 Portrait	1

## Multi Purpose Stainless Steel Utility Stand

This Multi Purpose Stainless Steel Utility Stand is ideal for holding a wide variety of items for keeping your work environment tidy and hygienic. Manufactured from heavy duty 304 Grade Stainless Steel, this item is perfectly hygienic for domestic and food production environments.

- Ideal for Clipboards, Ringbinders, Lever Arch Files, Diaries, iPads/Tablets, Smart Phones, Paper storage & Recipes.

CODE	DESCRIPTION	PACK QTY
598-P49	Multi Purpose Stainless Steel Utility Stand	1

## Aluminium Flipcharts

Manufactured from a Robust yet Stylish and Hygienic/ Easy to Clean Anodized Aluminium complete with a Chrome Plated Ring Binder Mechanism this New Range of Detectamet Flipcharts are available in A4 & A3 Sizes in Landscape Style.

CODE	DESCRIPTION	PACK QTY
315-O04-A36	A3 Landscape, 4 Ring Mechanism	1
315-O05-A35	A4 Landscape, 2 Ring Mechanism	1
315-O05-A36	A4 Landscape, 4 Ring Mechanism	1
315-O06-A35	A4 Portrait, 2 Ring Mechanism	1

## Stainless Steel Document Filing Trays

Detectamet's new stackable stainless steel A4 size in/out tray. Generous capacity ideal for printout, stationery, warehouse and mailroom environments. The trays are stackable and the edges fit together securely so you can build an organizing station that suits your needs.

- Large bottom tray - 420mm (16 1/2") x 240mm (9 1/2") x 90mm (3 1/2")
- Standard stackable tray - 340mm (13 1/3") x 240mm (9 1/2") x 90mm (3 1/2").

CODE	DESCRIPTION	PACK QTY
321-P32-S091	A4 Stainless Steel Large Bottom Tray	1
321-P32-S240	A4 Stainless Steel Standard Stackable Tray	1

## Clipboard Clips & Hanging Hooks

We are happy to supply our range of clipboard clips and hanging hooks alone.

- Made from stainless steel or chrome plated steel
- Various styles available
- Durable and lightweight
- We can add any company logo or details to the stainless steel clips

CODE	DESCRIPTION	PACK QTY
310-T204	Stainless Steel Hanging Hook - max tube diameter 1"-1 1/4" round, 1" square	5
307-T185	Stainless Steel Board Clips	5
307-T186	Zinc Plated Economy Board Clips - with hanging hook	5
307-T093	Zinc Plated Economy Board Clips - 30mm x 100mm	5
307-T094	Zinc Plated Economy Board Clips - 30mm x 120mm	5
307-T187	Stainless Steel Economy Board Clips	5
307-T188	Zinc Plated Pen Holder Clip	5
308-T189	Zinc Plated Magnetic Pen Holder	5
307-T232	Jumbo Chrome Plated Clipboard Clip	5



307-T094  
Zinc Plated  
Economy Clip



307-T187  
Stainless Steel  
Economy Clip

**NEW  
PRODUCT**



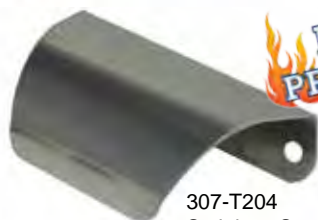
Stainless Steel HD Clip Colours



Economy Zinc Plated Clip Colours



307-T232  
Jumbo Economy  
Clipboard Clip



307-T204  
Stainless Steel  
Hanging Hook

**HOT  
PRODUCT**

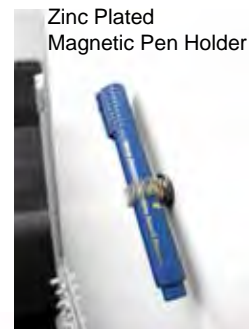


307-T185  
Stainless Steel  
Clipboard Clip

307-T188  
Zinc Plated Pen  
Holder Clip



308-T189  
Zinc Plated  
Magnetic Pen Holder

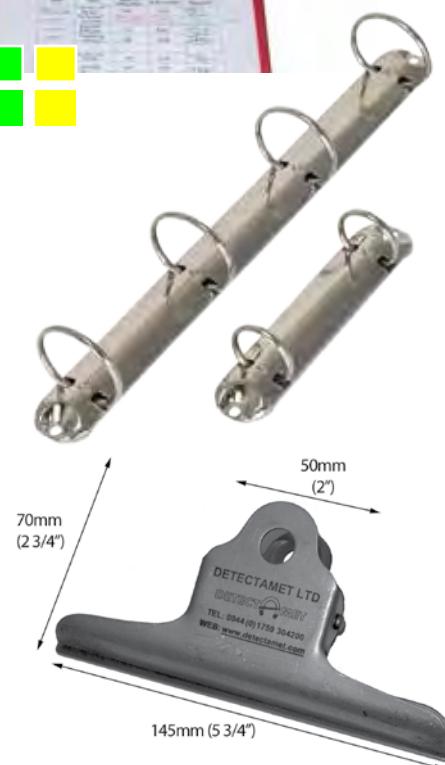


## Ring Binder Mechanism

Chrome Plated Ring Binder Rings available with 2 Rings or 4 Rings.

- 2 Ring: length 130mm, 30mm diameter rings.
- 2 Ring: length 130mm, 43mm diameter rings.
- 3 Ring: length 277mm, 43mm diameter rings.
- 4 Ring: length 290mm, 43mm diameter rings.

CODE	DESCRIPTION	PACK QTY
316-P42-A30	Ring Binder Mechanism - 2 Rings (30mm diameter)	10
316-P42-A31	Ring Binder Mechanism - 2 Rings (43mm diameter)	10
316-P42-A32	Ring Binder Mechanism - 3 Rings (30mm diameter)	10
316-P42-A33	Ring Binder Mechanism - 3 Rings (43mm diameter)	10
316-P42-A34	Ring Binder Mechanism - 4 Rings (43mm diameter)	10



## Stainless Steel Bulldog Clips

- Durable and lightweight for holding large reams of paper safely and securely.
- Made from stainless steel
- We can add any company logo or details to the clips
- Large size - 145mm (5 3/4") bar length
- Small size - 75mm (3") bar length
- Holds approximately 200 sheets of A4 80gm paper

CODE	DESCRIPTION	PACK QTY
309-S392-P32	Large - 145mm Stainless Steel Bulldog Clip	5
309-S393-P32	Small - 75mm Stainless Steel Bulldog Clip	5

DTM 1200 - 145mm Stainless Steel Bulldog Clip

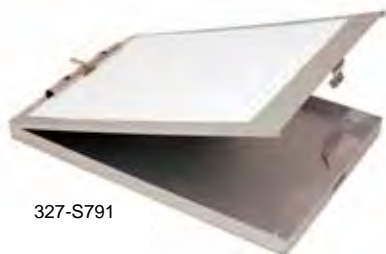


DTM 1300 - 75mm Stainless Steel Bulldog Clip

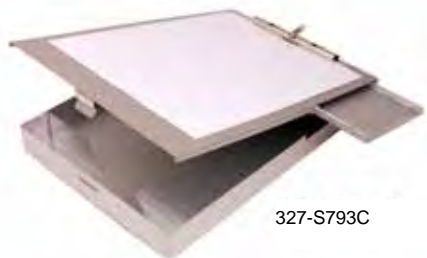
**HOT  
PRODUCT**

**Tel: 01759 304 200**  
**www.detectamet.co.uk**  
**orders@detectamet.com**





327-S791



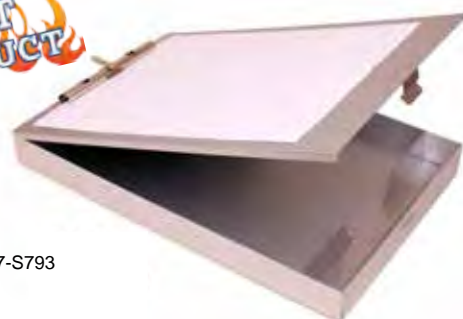
327-S793C



328-H02-S792



327-S792



327-S793

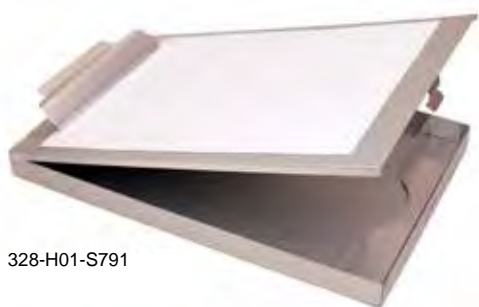
## Mobile Aluminium Desks

Separate compartment for pens and pencils. With self-locking latch to prevent contents from spilling.

CODE	DESCRIPTION	PACK QTY
327-S791	Top hinged, serrated clip - for storage space up to 9"x12"x1/2"	1
328-H02-S792	Right side hinged, serrated clip - for storage space up to 9"x12"x1/2"	1
327-S792	Left side hinged, serrated clip - for storage space up to 9"x12"x1/2"	1
327-S793C	1-1/4" deep storage compartment - Pull out solar calculator, serrated clip - for storage space up to 13-5/8"x9-1/4"x1-1/4"	1
327-S793	1-1/4" deep storage compartment, serrated clip - for storage space up to 13-5/8"x9-1/4"x1-1/4"	1

## Top Hinged Aluminium Form Holder

Metal clip holds forms, separate compartment for pen and metal clasp to prevent spilling of documents.



328-H01-S791

CODE	DESCRIPTION	PACK QTY
328-H01-S791	Fits forms up to 14" x 9" x 1" (W23 x L35.5 x H2.5cm)	1

## Recipe Card Holder

Wall mountable recipe card/document holders designed for use in the Food & Pharmaceutical industries.

Manufactured from high quality 304 grade stainless steel or anodised aluminium & has have been engineered to be lightweight and durable for production area environments, with the added ability to wipe clean.

- Designed to hold a laminated A4 recipe card
- Dimensions: 310mm (12 1/4") x 235mm (9 1/4")

CODE	DESCRIPTION	PACK QTY
320-O18-P32	Stainless Steel Recipe Card Holder	1
320-O18-P30	Anodised Aluminium Recipe Card Holder	1



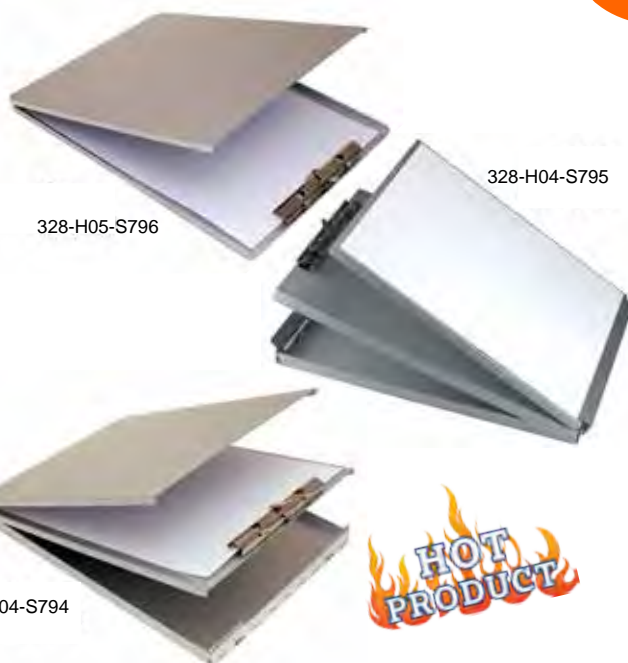
## Bottom Hinged Aluminium Form Holder

DTM A79740 - Slim type for keeping A4 sized papers. Serrated clip.

DTM A38740 - Two compartments for holding and storing sheets separately. Serrated clip.

DTM A68740 - Two compartments for holding and storing sheets separately. Serrated clip.

CODE	DESCRIPTION	PACK QTY
328-H05-S796	Fits forms up to 12-7/16"x9-1/4"x3/4" (L31.5 x W23.3 x H1.5cm)	1
328-H04-S794	Fits forms up to 12-1/4"x8-7/8"x1/2" (L31 x W22.6 x H1.27cm)	1
328-H04-S795	Fits forms up to 9-7/8"x5-7/8"x9/16" (L25 x W15 x H1.5cm)	1



## Side Hinged Aluminium Form Holder

Forms can be stored or clipped inside the holder. A plate inserted for smooth writing.

CODE	DESCRIPTION	PACK QTY
328-H03-S797	Fits forms up to 10-1/4"x6"x3/4" (L26 x W5.3 x H2.2cm)	1
328-H03-S798	Fits forms up to 12-5/8"x8-5/8"x3/4" (L32 x W22 x H2.2cm)	1
328-H03-S799	Fits forms up to 14-5/8"x8-5/8"x3/4" (L37.3 x W22 x H2.3cm)	1

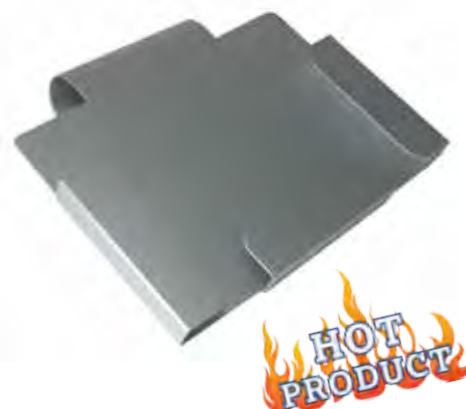


## Aluminium Recipe Card Holder

Chart holder made from heavy duty formed aluminium. Can be hung on office panels or partition walls.

- Thickness 1.5mm
- Dimensions W310 x H220mm
- Loading capacity 24mm
- Hanging hook diameter 46mm

CODE	DESCRIPTION	PACK QTY
326-O12-H09	Recipe Card Holder - horizontal	1
326-O12-H08	Recipe Card Holder - vertical	1



HOT  
PRODUCT

Ink Colour

NEW  
PRODUCTStainless Steel  
and Brass PenHOT  
PRODUCT

Ink Colour

Stainless Steel  
PenHOT  
PRODUCT

## Metal Food Factory Stick Pens

Detectamet metal stick pen is made using 2 different types of metal to offer magnetic and metal detectable/X-Ray detectable qualities. Suitable for many applications, ideal for use in ambient working temperatures and a clean environment, or where a one piece pen is stipulated. Available in various designs for operator comfort and preference.

CODE	DESCRIPTION	PACK QTY
115M-I01	Blue Standard Ink	50
115M-I02	Black Standard Ink	50
115M-I03	Red Standard Ink	50
115M-I04	Green Standard Ink	50
115M-I21	Blue Gel Ink	50
115M-I22	Black Gel Ink	50
115M-I23	Red Gel Ink	50
115M-I24	Green Gel Ink	50
115M-I11	Blue Pressurised Cryo Ink	50
115M-I12	Black Pressurised Cryo Ink	50
115M-I31	Blue Fine Tip Ink	50
115M-I32	Black Fine Tip Ink	50

## Stainless Steel Retractable Pens

Offering all the benefits of the Detectamet retractable pen and manufactured from Stainless Steel. Suitable for a range of food related environments. Includes either standard ink, pressurised ink or our **NEW** Gel & Fine Point inks.

CODE	DESCRIPTION	PACK QTY
<b>Stainless Steel Manager's Pen</b>		
113-A05-I01	Blue - Standard Ink	10
113-A05-I02	Black - Standard Ink	10
113-A05-I03	Red - Standard Ink	10
113-A05-I04	Green - Standard Ink	10
113-A05-I21	Blue - Gel Ink	10
113-A05-I22	Black - Gel Ink	10
113-A05-I23	Red - Gel Ink	10
113-A05-I24	Green - Gel Ink	10
113-A05-I11	Blue - Pressurised Ink	10
113-A05-I12	Black - Pressurised Ink	10
113-A05-I31	Blue - Fine Tip Ink	10
113-A05-I32	Black - Fine Tip Ink	10
<b>Stainless Steel Pen</b>		
114-A05-I01	Blue - Standard Ink	10
114-A05-I02	Black - Standard Ink	10
114-A05-I03	Red - Standard Ink	10
114-A05-I04	Green - Standard Ink	10
114-A05-I21	Blue - Gel Ink	10
114-A05-I22	Black - Gel Ink	10
114-A05-I23	Red - Gel Ink	10
114-A05-I24	Green - Gel Ink	10
114-A05-I11	Blue - Pressurised Ink	10
114-A05-I12	Black - Pressurised Ink	10
114-A05-I31	Blue - Fine Tip Ink	10
114-A05-I32	Black - Fine Tip Ink	10





From food processing and brewing, through distribution and storage to serving food, installing Detectamet stainless steel equipment brings unique benefits to the food and pharmaceutical industry.

One of the great advantages of the Detectamet stainless steel range is that it imparts no taste to the food/products that is prepared on it. Typical uses include kitchens, dairies, ham curing and fish storage. The grades used by Detectamet are 304, for ambient temperatures and low acid concentrations, and 316 for harsher environments. For example 304 is used in cheese and dairy production, but where salted (ham) products is being prepared 316 is used. In ice cream production /processing 316 is specified because strong anti-bacteriological cleaning and rinsing systems are used.

A further advantage is that stainless steel is resistant to damage caused by condensation cycles in high humidity areas such as kitchens etc. The Detectamet range also incorporates the use of other suitable metals for food applications such as aluminium and brass. Declarations of conformity are available on request.

#### STAINLESS STEEL STORAGE, MIXING & HANDLING EQUIPMENT

76	Stainless Steel 304 Scoops & 316 Pharma Scoops
76	Stainless Steel Pails & Buckets
77	Stainless Steel Shovels
77	Stainless Steel Paddles
78	Stainless Steel Forks
78	Stainless Steel Keyhole Loop Tag Dispenser
79	Stainless Steel Multi Purpose PPE Dispenser
79	Stainless Steel Tote Bin Cover Dispenser
80	Stainless Steel Disposable Glove Dispenser
80	Stainless Steel Wipe Dispenser

**NEW  
PRODUCT**

673-S562-A112



673-S565-A119



674-S561-A171



674-S567-A177



674-S562-A178

**NEW  
PRODUCT**

## Stainless Steel Scoops

Detectamet offer a large selection of Stainless Steel Scoops for Food Processing & Material Handling. Our scoops are approved for direct food contact and are Certified NSF Standard 2 - Food Equipment.

- Heavy gauge 304 stainless steel construction
- Ideal for food industry
- Polished finish.

CODE	DESCRIPTION	PACK QTY
673-S560-A110	Stainless Steel Scoop - 8oz (255g), 4" (100mm) Handle	5
673-S561-A111	Stainless Steel Scoop - 16oz (450g), 4" (100mm) Handle	5
673-S562-A112	Stainless Steel Scoop - 32oz (907g), 4" (100mm) Handle	5
673-S562-A113	Stainless Steel Scoop - 32oz (907g), 24" (610mm) Handle	5
673-S563-A114	Stainless Steel Scoop - 64oz (1814g), 4" (100mm) Handle	5
673-S563-A115	Stainless Steel Scoop - 64oz (1814g), 24" (610mm) Handle	5
673-S564-A116	Stainless Steel Scoop - 96oz (2720g), 4.5" (115mm) Handle	5
673-S565-A119	Stainless Steel Scoop - 128oz (3630g), 4.5" (115mm) Handle	5
673-S565-A129	Stainless Steel Scoop - 128oz (3630g), 4.5" (115mm) Straight Handle	5
673-S566-A134	Stainless Steel Scoop - 160oz (4535g), 5" (127mm) Handle	5

## Stainless Steel Pharma Scoops

Detectamet offer a large selection of Stainless Steel Pharma Scoops. Ideal for use in the pharmaceutical industry and appropriate for any hygienic application. Our pharmaceutical Scoops are great for dispensing powders and granules and are Certified NSF Standard 2 - Food Equipment.

- Heavy duty, 316 stainless steel body
- Great for dispensing powders and granules
- Fully welded construction
- Large radiused for easy cleaning
- Brilliant polished finish

CODE	DESCRIPTION	PACK QTY
674-S560-A170	Stainless Steel Scoop - 8oz (255g), 4" (100mm) Handle	5
674-S561-A171	Stainless Steel Scoop - 16oz (450g), 4" (100mm) Handle	5
674-S561-A172	Stainless Steel Scoop - 16oz (450g), 24" (610mm) Handle	5
674-S562-A173	Stainless Steel Scoop - 32oz (907g), 4" (100mm) Handle	5
674-S562-A174	Stainless Steel Scoop - 32oz (907g), 24" (610mm) Handle	5
674-S562-A178	Stainless Steel Scoop - 32oz (907g), Ergonomic Handle	5
674-S563-A176	Stainless Steel Scoop - 64oz (1815g), 4" (100mm) Handle	5
674-S563-A180	Stainless Steel Scoop - 64oz (1815g), Ergonomic Handle	5
674-S567-A175	Stainless Steel Scoop - 50oz (1417g), 4" (100mm) Handle	5
674-S567-A177	Stainless Square Scoop - 50oz (1417g), 4" (100mm) Handle	5
674-S567-A179	Stainless Steel Scoop - 50oz (1417g), Ergonomic Handle	5

## Multi Purpose Stainless Pails

Detectamet offer a large selection of Stainless Steel Pails and buckets for Food Processing & Material Handling. Our scoops are approved for direct food contact and are Certified NSF Standard 2 - Food Equipment.

- Fully welded heavy duty stainless steel construction
- Polished finish
- No rolled edges or areas where dirt or bacteria can collect
- Smooth easy to clean
- 13 and 16 quart (14.75 and 18 litre) pails are available with or without handles

CODE	DESCRIPTION	PACK QTY
675-A181	Stainless Steel Pail - 13 Quart (14.75 litre)	3
675-A182	Stainless Steel Pail with Handle - 13 Quart (14.75 litre)	3
675-A183	Stainless Steel Pail - 16 Quart (18 litre)	3
675-A184	Stainless Steel Pail with Handle - 16 Quart (18 litre)	3

## Multi Purpose Stainless Shovels

Detectamet offer a large selection of Stainless Steel Shovels for Food Processing & Material Handling. Our shovels are approved for direct food contact and are Certified NSF Standard 2 - Food Equipment.

- Added Grooves help stiffen blade and add strength
- NSF Certified Standard 2 - Food Equipment
- Designed for the Food Processing Industry
- Electropolished finish that is stain and bacteria resistant
- Heavy duty welds for extra strength
- Tough and durable stainless steel makes this shovel ideal for moving bulk materials
- Available in 304 & 316 grade stainless steel
- Electropolished and passivated to enhance corrosion resistance
- Standard version blade is smooth and easy to clean
- Reinforced version blades have grooves for rigidity.

CODE	DESCRIPTION	PACK QTY
670-T330	Stainless Steel Shovel 304 - 10 3/4" x 15" (273mm x 381mm)	3
670-T331	Stainless Steel Shovel 304 - 9 1/2" x 12 1/2" (241mm x 317mm)	3
670-T332	Stainless Steel Shovel 304 - 11 1/2" x 15 1/2" (292mm x 394mm)	3
670-T333	Stainless Steel Shovel 304 - 7" x 11" (178mm x 279mm)	3
670-T334	Stainless Steel Shovel 304 - 13 3/4" x 17" (349mm x 432mm)	3
670-T335	Stainless Steel Shovel 316 - 10 3/4" x 15" (273mm x 381mm)	3
670-T336	Stainless Steel Shovel 316 - 9 1/2" x 12 1/2" (241mm x 317mm)	3
670-T337	Stainless Steel Shovel 316 - 11 1/2" x 15 1/2" (292mm x 394mm)	3
670-T338	Stainless Steel Shovel 316 - 7" x 11" (178mm x 279mm)	3
670R-T330	Stainless Steel Reinforced Shovel 304 10 3/4" x 15" (273mm x 381mm)	3
670R-T331	Stainless Steel Reinforced Shovel 304 9 1/2" x 12 1/2" (241mm x 317mm)	3
670R-T332	Stainless Steel Reinforced Shovel 304 11 1/2" x 15 1/2" (292mm x 394mm)	3
670R-T333	Stainless Steel Reinforced Shovel 304 7" x 11" (178mm x 279mm)	3
670R-T334	Stainless Steel Reinforced Shovel 304 13 3/4" x 17" (349mm x 432mm)	3

## Stainless Steel Paddles

Detectamet offer a large selection of Stainless Steel Paddles for Food Processing & Material Handling. Our paddles are approved for direct food contact and are Certified NSF Standard 2 - Food Equipment.

- NSF Certified Standard 2 - Food Equipment
- Designed for the Food Processing Industry
- Electropolished finish enhances corrosion resistance; improves surface finish and ease of cleaning
- Tough and durable stainless steel makes this paddle ideal for mixing bulk materials
- Available in 304 grade stainless steel

CODE	DESCRIPTION	PACK QTY
671-S063	Stainless Steel Paddle - 36" (914mm) long	3
671-S064	Stainless Steel Paddle - 42" (1067mm) long	3
671-S065	Stainless Steel Paddle - 48" (1219mm) long	3
671-S067	Stainless Steel Paddle - 60" (1524mm) long	3

**NEW  
PRODUCT**



670-T333



670R-T332

**NEW  
PRODUCT**



**Tel: 01759 304 200**  
**www.detectamet.co.uk**  
**orders@detectamet.com**



**NEW  
PRODUCT**

672-T133-S500



672-T137-S504

## Stainless Steel Forks

Detectamet offer a large selection of Stainless Steel Forks for Food Processing & Material Handling. Our forks are approved for direct food contact and are Certified NSF Standard 2 - Food Equipment.

- Tough and durable stainless steel makes these forks ideal for moving bulk materials
- Electropolished finish enhances corrosion resistance; improve surface finish and ease of cleaning
- Overall lengths range from 44" (1120mm) to 60" (1525mm)
- Tine lengths range from 8 1/2" (215mm) to 12" (305mm)

CODE	DESCRIPTION	PACK QTY
672-T133-S500	Stainless Steel Fork, 5 tines, 12" long	3
672-T134-S500	Stainless Steel Reinforced Fork, 5 tines, 12" long	3
672-T135-S500	Stainless Steel Super Reinforced Fork, 5 tines, 12" long	3
672-T133-S501	Stainless Steel Fork, 5 tines, 8 1/2" long	3
672-T134-S501	Stainless Steel Reinforced Fork, 5 tines, 8 1/2" long	3
672-T135-S501	Stainless Steel Super Reinforced Fork, 5 tines, 8 1/2" long	3
672-T133-S502	Stainless Steel Fork, 4 tines, 12" long	3
672-T134-S502	Stainless Steel Reinforced Fork, 4 tines, 12" long	3
672-T135-S502	Stainless Steel Super Reinforced Fork, 4 tines, 12" long	3
672-T133-S503	Stainless Steel Fork, 4 tines, 8 1/2" long	3
672-T134-S503	Stainless Steel Reinforced Fork, 4 tines, 8 1/2" long	3
672-T135-S503	Stainless Steel Super Reinforced Fork, 4 tines, 8 1/2" long	3
672-T136-S504	Stainless Steel Drag Fork, 4 tines, 9" long	3
672-T137-S504	Stainless Steel Reinforce Drag Fork, 4 tines, 9" long	3
672-T138-S504	Stainless Steel Super Reinforced Drag Fork, 4 tines, 9" long	3
672-T139-S505	Stainless Steel Cheese Fork, 5 tines, 10" long	3

**NEW  
PRODUCT**

## Stainless Steel Keyhole/Loop Tag Dispensers

Manufactured in Britain from high quality stainless steel the new Detectamet Keyhole Tag Dispensers are designed and made to hold single or multiple rolls of either large or small tags.

Perfect for production areas, food service, shipping rooms, retail, and industrial applications and anywhere a simple label/tag dispenser is needed. The dispensers are wall mountable and feature a hinged lid for quick and easy refilling. A view slot on the side indicates when the roll is close to running out. Bespoke sizes and designs are available, please contact us for more details.

CODE	DESCRIPTION	PACK QTY
558-S176	Stainless Steel Single Roll Large Tag Dispenser	1
558-S177	Stainless Steel Single Roll Small Tag Dispenser	1
558-S178	Stainless Steel 8 Roll Large Tag Dispenser	1
558-S179	Stainless Steel 8 Roll Small Tag Dispenser	1



See page 61 for our full range of detectable tags and labels.

## Multi Purpose Stainless Steel PPE Dispenser

Multi-purpose stainless steel dispenser for the distribution of PPE items that can be free standing on a stainless steel stand. The stainless steel construction permits easy and efficient cleaning, and a vertical slot in the front face lets supervisors see when the dispenser needs refilling. Suitable for a wide range of PPE equipment including:

- Mobcaps (Approximate capacity 200)
- Hair Nets (700)
- Beard Snoods (600)
- Ear Plugs (600 pairs)
- Overshoes (600)
- Oversleeves (200).

CODE	DESCRIPTION	PACK QTY
453-P45-A26	Stainless Steel Dispenser - with Stand	1
453-P45-A25	Stainless Steel Dispenser - Wall Mountable	1
453-P45-A27	Stainless Steel Dispenser - with Mobile Stand	1



## Stainless Steel Tote Bin Cover Dispenser

Made in Britain from high quality stainless steel, the tote bin cover dispenser from Detectamet is designed to accommodate a roll of 250 tote/euro bin covers.

The dispenser is wall mounted and features a latch secured and hinged lid for quick and easy refilling. A view slot on the side makes it easy to see when the roll is about to run out.

Width - 770mm (30 1/3"), Height - 220mm (8 1/2"), Depth - 220mm (8 1/2").

CODE	DESCRIPTION	PACK QTY
589-T198	Stainless Steel Tote Bin Cover Dispenser	1



**NEW  
PRODUCT**

## Stainless Steel Glove Dispensers

Waste and contamination are just two challenges for food processing management teams unless they establish storage and dispensing systems that are easy to find and firmly fixed for straight forward access. Detectamet's new Stainless Steel Glove Dispensers help them to successfully meet these challenges. Made from high quality stainless steel they are supplied in four sizes to hold a single box of 100 gloves or up to four boxes loaded vertically. They can be screw mounted onto a wall where they will be easy to clean and sanitise.

Additional varieties include a single box dispenser that has a bar hook to hang from a pipe, bar or the top of a panel. Another option is a single box that is enclosed with a front oval exit and a small side access to allow for replacement of an empty box.

CODE	DESCRIPTION	PACK QTY
454-A151-A157	Detectable Glove Dispenser - 1 box capacity	1
454-A152-A146	Detectable Glove Dispenser - 2 box capacity	1
454-A153-A146	Detectable Glove Dispenser - 3 box capacity	1
454-A154-A157	Detectable Glove Dispenser - Horizontal 4 box capacity	1
454-A154-A158	Detectable Glove Dispenser - Vertical 4 box capacity	1
454-A146-A17	Detectable Glove Dispenser - 1 box capacity hanging	1
454-A151-A158	Detectable Glove Dispenser - 1 box capacity enclosed	1

**NEW  
PRODUCT**

## Stainless Steel Wipe Dispensers

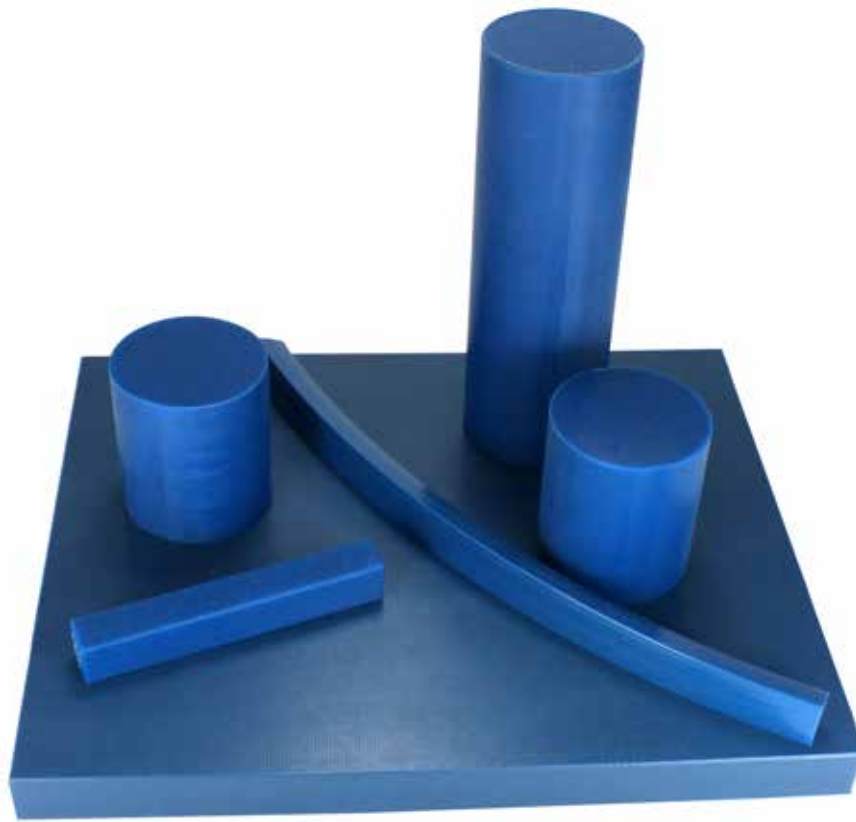
The Wipe Dispenser Holders are designed to hold one or two tubs of wipes and can be mounted on a handy wall. These will help to keep the work areas free of clutter and further reduce the risk of mislaying the tubs and the possibility of contamination.

CODE	DESCRIPTION	PACK QTY
431-A25-X37-P45	Stainless Steel Wall Mounted Dispenser - to suit single tub of Probe wipes	1
431-A25-X36-P45	Stainless Steel Wall Mounted Dispenser - to suit single tub of Disinfectant wipes	1
431-A25-X38-P45	Stainless Steel Wall Mounted Dispenser - to suit 1x tub of Probe & 1x tub of Disinfectant wipes	1



Visit our website for our full range of stainless steel.  
[www.detectamet.co.uk](http://www.detectamet.co.uk)





Detectamet has developed a wide range of detectable engineering materials and equipment for the food and pharmaceutical industries. This part of our product range grows yearly, as we continue to provide solutions for our customers. Not only can we offer the standard products in this catalogue, but also provide a bespoke design and development service which is provided by a team of dedicated staff.

#### DETECTABLE ENGINEERING PRODUCTS

82	Detectasil® Detectable Silicone Sealant
83	Detectamet Detectable O-Rings & Seals
83	Detectamet Detectable Sifter Balls
83	Detectamet Detectable Silicone Rubber
84	Detectamet Detectable Acetal
84	Detectamet Detectable PTFE
85	Detectamet Detectable Food Grade UHMWPE
85	Detectamet Detectable PA6 Filled
85	Detectamet Detectable Food Grade Belting
86	Detectamet Detectable Polyurethane Belt
86	Detectamet Detectable Polythene
86	Detectamet Detectable Mouse Box
86	Detectable Gasket Scrapers
87	Detectamet Detectable Compounds



## Detectasil® Detectable Silicone Sealant

Detectasil® from Detectamet is a detectable silicone sealant that can be 'seen' by metal and X-ray detection systems in the food industry. The sealant is used in structural fitting and equipment installation and reduces the risk of undetected contamination of food products.

It is available in white or blue, and the 310ml tube fits standard applicators. The detectable additive tastes nasty to rodents and deters them from eating the sealant after application.



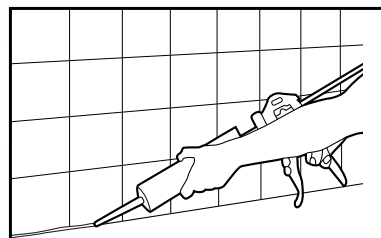
### KEY FEATURES

- Detectable by standard metal and X-ray detection systems
- Designed for use in temperatures from -30°C to +150°C
- Unpalatable to rodents
- Standard applicator gun

### SUITABLE APPLICATIONS

- ✓ Window and Door Frames
- ✓ Wall panels
- ✓ Machinery
- ✓ Finishing
- ✓ Worktops & laminates
- ✓ Sinks and other wet installations

### AVAILABLE COLOURS



CODE	DESCRIPTION	PACK QTY
820-P01	Detectasil 310ml Tube - Blue	1
820-P06	Detectasil 310ml Tube - White	1



## Detectamet Metal Detectable O-Rings

Specifically developed to meet the stringent demands of the food and pharmaceutical industries. The New Detectamet Metal Detectable range of O-Rings includes FDA compliant (on most sizes) or food safe grades of EPDM, Nitrile and Fluorocarbon (FKM) compounds.

Fragments of Detectamet as small as 2mm can be identified by metal detector equipment.

Features of Metal Detectable O-Rings include:

- Early detection and containment of contamination
- Reduced product loss
- Increased productivity
- FDA compliant elastomer materials
- Free from animal derived ingredients
- Temperature range from – 40 Degrees C to + 200 Degrees C
- Blue seals to assist in easy identification
- Detectamet compounds can be moulded into O-Rings and custom components
- Detectamet O-rings available from 0.25mm to over 2 metres in diameter, in any combination of ID and cross section, both in small quantities and large volumes.

Material Options

- FKM/FPM
- NBR or BUNA N
- EPD/EPDM
- Silicone

Please contact our technical team with your specific requirements.



## Detectamet Detectable Sifter Cleaning Balls

Detectamet offer a wide range of cleaner balls to fit any sifting application. Sifter balls work inside screen decks to prevent the screens from clogging which leads to a loss in sifter capacity along with an increase in sifter tailings or overs.

Balls are available in 80 shore hardness and range of sizes from 11mm (7/16") up to 250mm (10"). Please contact us with your requirements.



## Detectamet Detectable Silicone Rubber Extrusions

Detectamet are able to offer a metal detectable rubber silicone extrusion for general purpose compound having good mechanical properties. Features include good heat stability inside temperature range, supplied in specific colour; blue. The popular use of this product is found in Food and Dairy, Bakery, Beverage, Pharmaceutical and OE Markets.

A metal detectable general purpose compound having good mechanical properties. Features include good heat stability inside temperature range, supplied in specific colour; blue.

All the constituents in this compound conform to FDA regulation 21 CFR 177.2600.

Shore hardness; 75° +/- 5°

Elongation at break; 320 %

Tensile strength; 8.0 MPA

Tear strength; 12 KN/M

Specific gravity; 1.22

Temp range; -70°C to +200°C (with heat stabiliser up to 250°C)

Compression set; 32%

Detectamet are also available to manufacture extrusions to suit your specific applications. Please contact us with your requirements.







## Detectamet Detectable Silicone Rubber Sheet

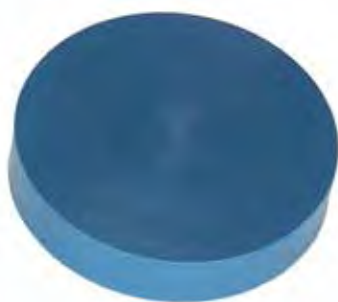
Metal Detectable Rubber Sheet. Impregnated Silicone Calendered Sheet Grade.

Available in 1.5mm, 2.0mm, 3.0mm, 4.0mm and 6.0mm as standard (minimum order 2mt x 1mt. also available in 1mt increments up to 10mt long).  
Heat Stabilising Available 300mm wide only - please contact us direct for details.

This product contains only ingredients that are listed by the American Food & Drugs Administration (FDA) under the 21 CFR number 177-2600.

Typical Applications: Metal detectable seals, gaskets, joints and strips used in sensitive food, drink and pharmaceutical applications.

CODE	DESCRIPTION	PACK QTY
815-S148-P01	Sheet size 2m x 1m (longer lengths available POA) - 2m x 1m x 1.5 mm thick	1
815-S149-P01	Sheet size 2m x 1m (longer lengths available POA) - 2m x 1m x 2 mm thick	1
815-S150-P01	Sheet size 2m x 1m (longer lengths available POA) - 2m x 1m x 3 mm thick	1
815-S151-P01	Sheet size 2m x 1m (longer lengths available POA) - 2m x 1m x 4 mm thick	1
815-S152-P01	Sheet size 2m x 1m (longer lengths available POA) - 2m x 1m x 6 mm thick	1



## Detectamet Detectable Acetal

- Good balance of stiffness and impact strength for applications where higher dimensional stability is required.
- Metal and visual detection by blue colour
- Detection by x-ray also possible
- Continuous use temperature up to 105 Celsius (221 Fahrenheit)

### Applications

- Scrapers
- Funnels
- Guiders
- Grippers
- Gears

### Sizes

- Extruded Rods 30/50/80mm x 1000/3000mm
- Extruded Plates 20/40/80 x 610 x 1000/3000mm



## Detectamet Detectable PTFE

Detectable Teflon. Metal Detectable PTFE for use in the Food Industry by Detectamet.

Suitable for scrapers, wearstrips, bushes in high temperature applications.

- Chemical resistant.
- Corrosion resistant.
- Can withstand temp of +260 degrees and down to -260 degrees.
- FDA compliant

Available as semi finished product or machined components.

Please contact our technical team with your specific requirements.

## Detectathene Detectable Food Grade UHMWPE

Specifically developed for the Food, Pharmaceutical, Packaging, Bottling & Canning, General Engineering Industries this unique Detectamet "Detectathene" a metal detectable ultra high molecular weight polythene is suitable for use in the following applications: \*Wear Strips, Guide Rails, Corner Wearbends, Chain Guides, Bearings, Bushes, Scrapers, Rollers, Idler Wheels, Liners, General Machined Parts etc.

\*In addition to these applications we are able to manufacture parts to your specification.

- Metal Detectable
- X Ray Visible
- Approved for direct contact with food
- Excellent wear resistance
- High Impact Resistant
- Easy to Machine
- Self Lubricating (good bearing properties)
- Abrasion Resistant
- Water repellent
- Acid resistant
- Corrosion resistant
- Vibration & noise dampening
- Blue Colour
- Chemical Resistant
- Lightweight
- Cost Effective
- Dirt Repellent
- Suitable for low temperature environments (-260 degrees + 80 degrees Celsius)

Sheet Sizes Available:

- 2020mm x 1010mm
- 3030mm x 1010mm
- 2020mm x 1220mm
- 2440mm x 1220mm
- 3050mm x 1220mm

Thicknesses Available:

- 8, 10, 12, 15, 20, 25, 30, 35, 40, 45, 50, 55, 60, 70, 80, 90 & 100mm

Also available as a rod in diameter from 25mm to 200mm

Lengths available 1m, 2m and 3m.



## Detectamet Detectable PA6 Filled

High wear and fatigue resistance

Lower moisture absorption than standard PA6

Metal and visual detection by blue colour

Detection by x-ray also possible

Continuous use temperature up to 85 Celsius (185 Fahrenheit)

Applications

- Thrust Washers
- Seals
- Rolls

Sizes

- Extruded Rods 30/50/80mm x 1000/3000mm
- Extruded Plates 20/40/80 x 610 x 1000/3000mm

## Detectable Food Grade Belting

Metal detectable Plastic. Polypropylene, Polyethylene, Acetal materials.

Straight running and side flexing versions.

Closed top to 60% open area.

Suitable for dry, wet and frozen applications.

Please contact our technical team with your specific requirements.

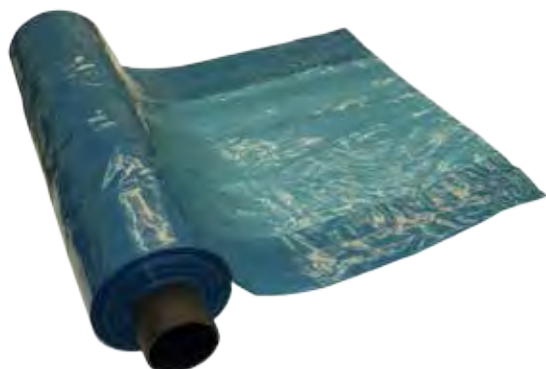


## Detectathane Polyurethane Belt

Detectathane is part of a new series of film grade polyester-based thermoplastic polyurethanes (TPU), specifically targeted for extruded profiles, film and sheet applications, moulded parts, and other high end extrusion applications. Detectathane exhibits excellent abrasion resistance and toughness, and conforms to FDA food contact directives and has been approved for use by the USDA. (Equipment Acceptance Certificate)

For technical data please see our website - [www.detectamet.co.uk](http://www.detectamet.co.uk)

Detectamet are also available to manufacture extrusions/belts to suit your specific applications. Please contact us with your requirements.



## Detectable Polythene

Recognizing the issue of risk of film contamination in the food and pharmaceutical processing industry, Detectamet have developed a unique metal detectable polythene film.

The Detectamet Detectable film replaces standard thick blue polyethylene film with a stiffer, stronger film that is detectable down to very small particle sizes by the standard metal detection systems already in place on food processing lines. Detectamet Polythene is available in sheet, reel or bag format in a wide range of sizes and colours to suit many applications.

- Roll Size: 850mm wide x 38 micron
- Colour: Blue



## Detectable Mouse Box

A traditionally sized box with a host of new features, many of which are exclusive to the Detectable Mouse Box. Larger and more enticing to mice.

New user-friendly locking system with a universal stainless steel key.

CODE	DESCRIPTION	PACK QTY
501-P01	Detectable Mouse Box	50
504-T125	Metal Key to suit Detectable Mouse Box	1

## Detectable Handle Stainless Steel Gasket Scraper

High quality heavy duty detectable gasket scrapers. Ideal for gasket scraping, removal of rust, grease or other similar debris from difficult to reach areas. Made with a stainless steel blade for extra strength, durability and long service life. The handle is easy to grip and manufactured from Detectamet's detectable plastic.

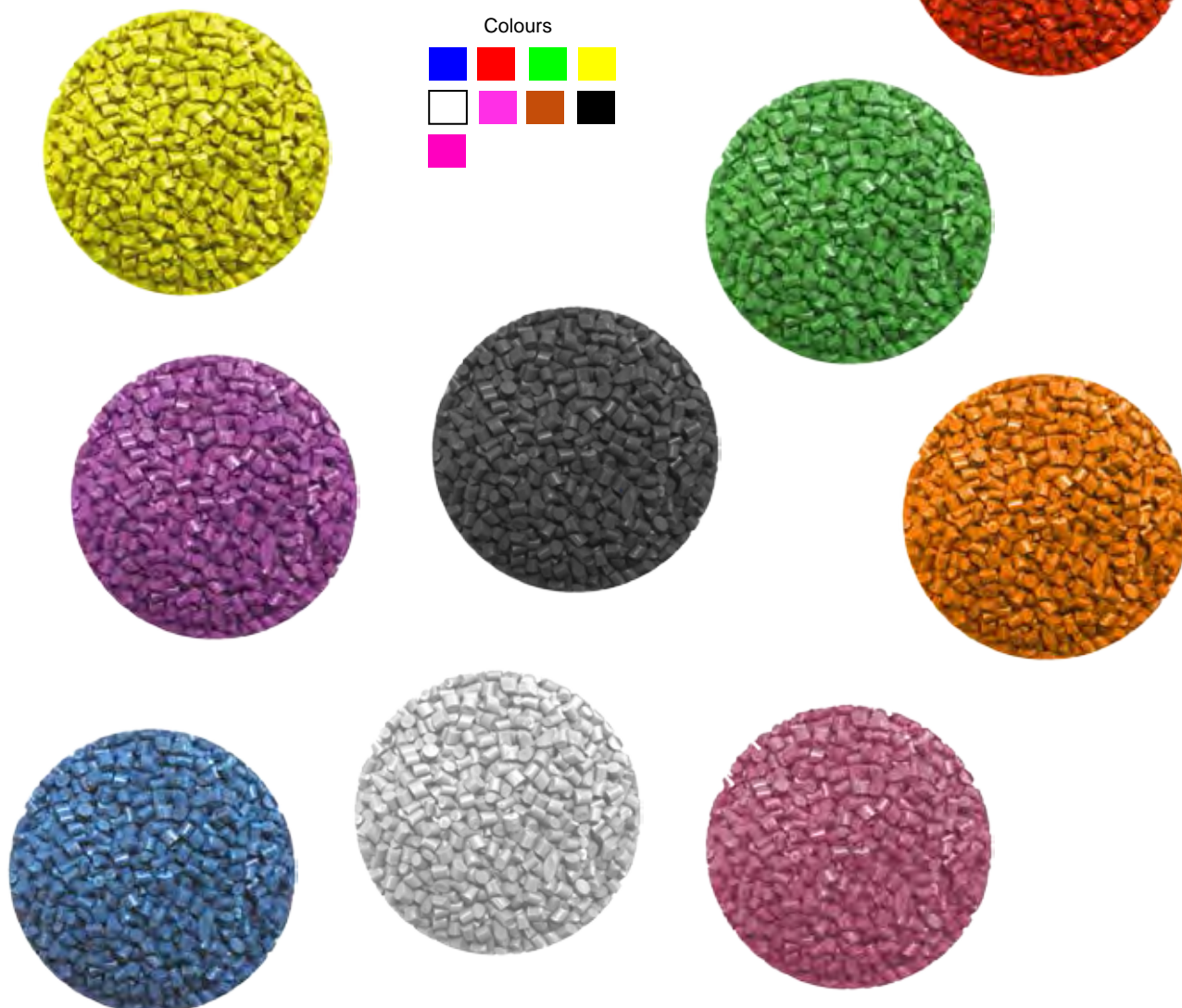


CODE	DESCRIPTION	PACK QTY
586-W11-Q03-S235	Stainless Steel Scraper - 20mm wide blade	1
586-W11-Q03-S234	Stainless Steel Scraper - 16mm wide blade	1
586-W11-Q03-S233	Stainless Steel Scraper - 12mm wide blade	1



## Detectamet Detectable Compounds

Detectamet are able to offer metal detectable and x-ray visible compounds in a variety of different colours and grades including ABS, nylon and polypropylene. Contact our sales office on +44 (0)1759 304200 or [sales@detectamet.com](mailto:sales@detectamet.com) for more information.





Detectamet Ltd.  
Unit 55 Halifax way  
Pocklington Ind Est  
Pocklington, York  
YO42 1NR, UK

Tel: +44 (0)1759 304 200  
Fax: +44(0)1759 305 236  
Email: [sales@detectamet.com](mailto:sales@detectamet.com)  
Live Chat: 8am - 10pm (GMT)



Detectamet Inc.  
5111 Glen Alden Drive  
Richmond  
VA, 23231  
USA

Tel: +1-804-303-1983  
Toll Free: +1-844-820-7244  
Cell: +1-804-370-4579  
Email: [sales.usa@detectamet.com](mailto:sales.usa@detectamet.com)  
Live Chat: 3am - 5pm (EST)

## HOW TO PLACE YOUR ORDER

[orders@detectamet.com](mailto:orders@detectamet.com)  
tel: +44 (0)1759 304200  
fax: +44 (0)1759 304798  
[www.metal-detectable-products.com](http://www.metal-detectable-products.com)

## Detectamet Ltd

Unit 55 Halifax Way  
Pocklington Industrial Estate  
Pocklington  
York  
YO42 1NR  
United Kingdom  
Tel: +44 (0) 1759 304 200  
General Fax: +44 (0) 1759 305 236  
Sales Fax: +44 (0) 1759 304 798  
E-Mail: [sales@detectamet.com](mailto:sales@detectamet.com)  
[www.detectamet.co.uk](http://www.detectamet.co.uk)



In Partnership with



Scan me to download  
the latest catalogue

