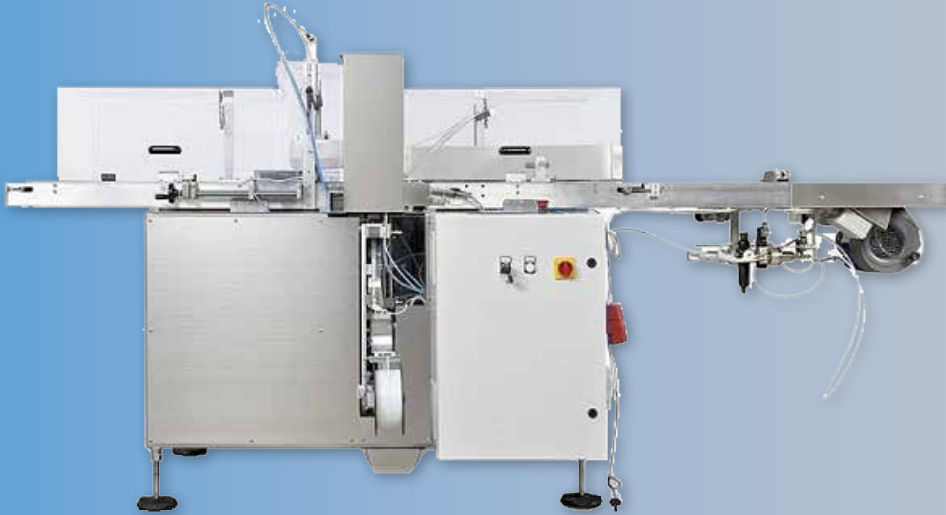
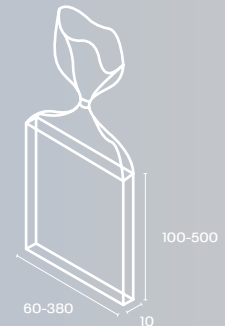
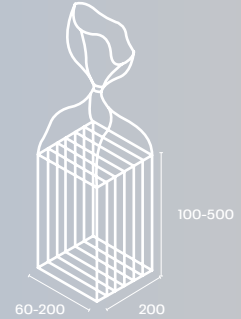




SEMI-AUTOMATIC BAGGING & CLOSING MACHINE



SA 40 OR



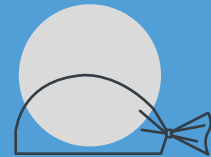
Horizontal bagging & closing machine for medium and large businesses.

The machine can be equipped with an automatic bag-opening device, which the machine operator uses to put the product into the bag. The product is then carried to the automatic sealing unit, which attaches the plastic or aluminium Clip band or the opening/closing Twist band.

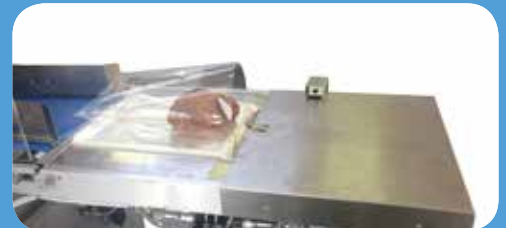
The machine can be equipped with a pneumatic engraving device, cold ink printer or electronic inkjet printer to stamp the expiry date and the batch number on the seal.

On request, the machine can be supplied with a hot bars device with electronic logic to thermo-sealing the bag.

APPLICATION FIELDS

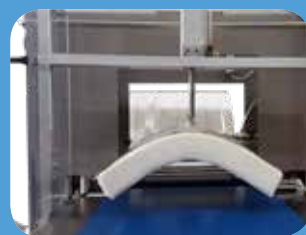


BAKED PRODUCTS
bread loaves, arabic bread,
flats bread, panettoni



CHARACTERISTICS AND ADVANTAGES

SIMPLE to use | FAST reel change | LONG reel life
 MINIMAL use of energy | LOW COST of closing material
 SOLID mechanical structure | STRONG sealing system



DEVICE FOR AIR REMOVING FROM THE BAG

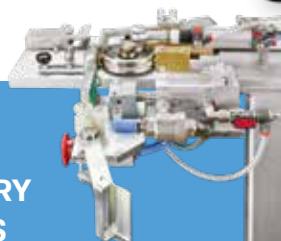


AROMA DOSING DEVICE



BAG-OPENING DEVICE AS400

ACCESSORY OPTIONS



ENGRAVING DEVICES



ELECTRONIC INKJET PRINTERS



COLD INK PRINTERS

Technical characteristics

- Electro-pneumatic function • Air consumption: about 160 l/min at 6 bar • Installed power: about 0,2 Kw
- Voltage 380 V 50 Hz • Overall dimensions with bag-opening device (L x W x H): 3000 x 900 x 1900 mm

Variable productive capacity depending on: type of products, bag and product sizes, packaging material

Models available

Model SA 40 P-OR PLASTIC or ALUMINIUM CLIP BAND	
Length	40 mm
Mechanical speed	35 cycle/minute
Operation	electropneumatic

Model SA TWIST-OR OPEN/CLOSE TWIST BAND	
Length	100 mm
Mechanical speed	30 cycle/minute
Operation	electropneumatic

Model SA 40 P-OR B with BAG OPENING DEVICE PLASTIC or ALUMINIUM CLIP BAND	
Length	40 mm
Mechanical speed	30 cycle/minute
Operation	electropneumatic

Model SA TWIST-OR B with BAG OPENING DEVICE OPEN/CLOSE TWIST BAND	
Length	100 mm
Mechanical speed	30 cycle/minute
Operation	electropneumatic

Model TSA 40/400 with BAG OPENING DEVICE and THERMO-SEALING UNIT • PLASTIC or ALUMINIUM CLIP BAND	
Length	40 mm
Mechanical speed	20 cycle/minute
Operation	electropneumatic

Model TSA TWIST/400 with BAG OPENING DEVICE and THERMO-SEALING UNIT • OPEN/CLOSE TWIST BAND	
Length	100 mm
Mechanical speed	20 cycle/minute
Operation	electropneumatic